



BUILDING CODE COMPLIANCE OFFICE (BCCO)  
PRODUCT CONTROL DIVISION

MIAMI-DADE COUNTY, FLORIDA  
METRO-DADE FLAGLER BUILDING  
140 WEST FLAGLER STREET, SUITE 1603  
MIAMI, FLORIDA 33130-1563  
(305) 375-2901 FAX (305) 375-2908

**NOTICE OF ACCEPTANCE (NOA)**

[www.buldingcodeonline.com](http://www.buldingcodeonline.com)

**PGT Industries**  
**1070 Technology Drive**  
**Nokomis, FL 34275**

**SCOPE:**

This NOA is being issued under the applicable rules and regulations governing the use of construction materials. The documentation submitted has been reviewed by Miami-Dade County Product Control Division and accepted by the Board of Rules and Appeals (BORA) to be used in Miami Dade County and other areas where allowed by the Authority Having Jurisdiction (AHJ).

This NOA shall not be valid after the expiration date stated below. The Miami-Dade County Product Control Division (In Miami Dade County) and/or the AHJ (in areas other than Miami Dade County) reserve the right to have this product or material tested for quality assurance purposes. If this product or material fails to perform in the accepted manner, the manufacturer will incur the expense of such testing and the AHJ may immediately revoke, modify, or suspend the use of such product or material within their jurisdiction. BORA reserves the right to revoke this acceptance, if it is determined by Miami-Dade County Product Control Division that this product or material fails to meet the requirements of the applicable building code.

This product is approved as described herein, and has been designed to comply with the Florida Building Code, including the High Velocity Hurricane Zone.

**DESCRIPTION: Series FD-750 Outswing Aluminum French Door w/Sidelites – L.M.I.**

**APPROVAL DOCUMENT:** Drawing No. **8000-11**, titled "Alum. French Door & Side Lites, Impact", sheets 1 through 11 of 11, prepared by the manufacturer, dated 12/23/04 with revision B dated 10/12/06, signed and sealed by Lucas A. Turner, P.E., bearing the Miami-Dade County Product Control Revision stamp with the Notice of Acceptance number and expiration date by the Miami-Dade County Product Control Division.

**MISSILE IMPACT RATING: Large and Small Missile Impact Resistant**

**LABELING:** Each unit shall bear a permanent label with the manufacturer's name or logo, city, state and following statement: "Miami-Dade County Product Control Approved", unless otherwise noted herein.

**RENEWAL** of this NOA shall be considered after a renewal application has been filed and there has been no change in the applicable building code negatively affecting the performance of this product.

**TERMINATION** of this NOA will occur after the expiration date or if there has been a revision or change in the materials, use, and/or manufacture of the product or process. Misuse of this NOA as an endorsement of any product, for sales, advertising or any other purposes shall automatically terminate this NOA. Failure to comply with any section of this NOA shall be cause for termination and removal of NOA.

**ADVERTISEMENT:** The NOA number preceded by the words Miami-Dade County, Florida, and followed by the expiration date may be displayed in advertising literature. If any portion of the NOA is displayed, then it shall be done in its entirety.

**INSPECTION:** A copy of this entire NOA shall be provided to the user by the manufacturer or its distributors and shall be available for inspection at the job site at the request of the Building Official. This NOA revises NOA # **05-0419.03** and consists of this page 1 and evidence pages E-1, E-2 and E-3, as well as approval document mentioned above.

The submitted documentation was reviewed by **Manuel Perez, P.E.**



**NOA No. 07-0103.02**  
**Expiration Date: February 24, 2010**  
**Approval Date: March 15, 2007**  
**Page 1**

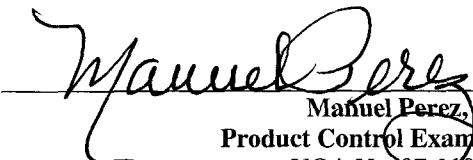
NOTICE OF ACCEPTANCE: EVIDENCE SUBMITTED

**A. DRAWINGS**

1. Manufacturer's die drawings and sections.
2. Drawing No **8000-11**, Sheets 1 through 11 of 11, titled "Alum. French door & Side lites, Impact", dated 12/23/04 with revision **B** dated 10/12/06, prepared by manufacturer, signed and sealed by Lucas A. Turner, P.E.

**B. TESTS**

1. Test reports on 1) Air Infiltration Test, per FBC, TAS 202-94  
2) Uniform Static Air Pressure Test, Loading per FBC TAS 202-94  
3) Water Resistance Test, per FBC, TAS 202-94  
4) Large Missile Impact Test per FBC, TAS 201-94,  
5) Cyclic Wind Pressure Loading per FBC, TAS 203-94  
6) Forced Entry Test, Per FBC 2411 3.2.1 and TAS 202-94  
along with marked-up drawings and installation diagram of aluminum doors of OXXO configuration, prepared by Fenestration Testing Laboratory, Inc., Test Report No. **FTL-4921**, dated 07/17/06, signed and sealed by Edmundo Largaespada, P. E.
2. Test reports on 1) Uniform Static Air Pressure Test, per FBC, TAS 202-94  
2) Large Missile Impact Test per FBC, TAS 201-94  
3) Cyclic Wind Pressure Loading per FBC, TAS 203-94  
4) Forced Entry Test, per FBC 2411 3.2.1 and TAS 202-94  
along with marked-up drawings and installation diagram of aluminum doors of OXXX configuration, prepared by Fenestration Testing Laboratory, Test Reports No. **FTL-4527**, dated 02/10/05, signed and sealed by Edmundo Largaespada, P. E.  
*(Submitted under NOA # 05-0419.03)*
3. Test reports on 1) Air Infiltration Test, per FBC, TAS 202-94  
2) Uniform Static Air Pressure Test, per FBC, TAS 202-94  
3) Water Resistance Test, per FBC, TAS 202-94  
4) Forced Entry Test, per FBC 2411 3.2.1 and TAS 202-94  
along with marked-up drawings and installation diagram of aluminum doors of OXXO configuration, prepared by Fenestration Testing Laboratory, Test Reports No. **FTL-4528**, dated 02/14/05, signed and sealed by Edmundo Largaespada, P. E.  
*(Submitted under NOA # 05-0419.03)*
4. Test reports on 1) Large Missile Impact Test per FBC, TAS 201-94  
2) Cyclic Wind Pressure Loading per FBC, TAS 203-94  
along with marked-up drawings and installation diagram of aluminum doors of XXXO configuration, prepared by Fenestration Testing Laboratory, Test Reports No. **FTL-4529**, dated 02/14/05, signed and sealed by Edmundo Largaespada, P. E.  
*(Submitted under NOA # 05-0419.03)*

  
Manuel Perez, P.E.  
Product Control Examiner  
NOA No. 07-0103.02  
Expiration Date: February 24, 2010  
Approval Date: March 15, 2007

**NOTICE OF ACCEPTANCE: EVIDENCE SUBMITTED**

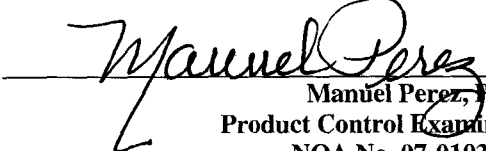
5. Test reports on 1) Large Missile Impact Test per FBC, TAS 201-94  
2) Cyclic Wind Pressure Loading per FBC, TAS 203-94  
along with marked-up drawings and installation diagram of aluminum outswinging french door, prepared by Fenestration Testing Laboratory, Test Reports No. **FTL-4530**, dated 02/14/05, signed and sealed by Edmundo Largaespada, P. E.  
*(Submitted under NOA # 05-0419.03)*
6. Test reports on 1) Large Missile Impact Test per FBC, TAS 201-94  
2) Cyclic Wind Pressure Loading per FBC, TAS 203-94  
along with marked-up drawings and installation diagram of **aluminum outswinging french door**, prepared by Fenestration Testing Laboratory, Test Reports No. **FTL-4311**, dated 09/01/04, signed and sealed by Edmundo Largaespada, P. E.  
*(Submitted under NOA # 05-0103.03)*
7. Test reports on 1) Uniform Static Air Pressure Test, per FBC, TAS 202-94  
2) Large Missile Impact Test per FBC, TAS 201-94  
3) Cyclic Wind Pressure Loading per FBC, TAS 203-94  
along with marked-up drawings and installation diagram of aluminum outswinging french door, prepared by Fenestration Testing Laboratory, Test Reports No. **FTL-4312**, dated 09/13/04, signed and sealed by Edmundo Largaespada, P. E.  
*(Submitted under NOA # 05-0103.03)*
8. Test reports on 1) Air Infiltration Test, per FBC, TAS 202-94  
2) Uniform Static Air Pressure Test, per FBC, TAS 202-94  
3) Water Resistance Test, per FBC, TAS 202-94  
4) Forced Entry Test, per FBC 2411 3.2.1 and TAS 202-94  
along with marked-up drawings and installation diagram of aluminum outswinging french door, prepared by Fenestration Testing Laboratory, Test Reports No. **FTL-4315**, dated 09/13/04, signed and sealed by Edmundo Largaespada, P. E.  
*(Submitted under NOA # 05-0103.03)*PGT Industries

**C. CALCULATIONS**

1. Anchor verification calculations and structural analysis, complying with FBC-2004, prepared by Al-Farooq Corporation, dated 12/15/06, signed and sealed by Lucas A. Turner, P.E.  
**Complies with ASTM E1300-02**

**D. QUALITY ASSURANCE**

1. Miami Dade Building Code Compliance Office (BCCO).

  
Manuel Perez, P.E.  
Product Control Examiner  
NOA No. 07-0103.02  
Expiration Date: February 24, 2010  
Approval Date: March 15, 2007

**NOTICE OF ACCEPTANCE: EVIDENCE SUBMITTED**

**E. MATERIAL CERTIFICATIONS**

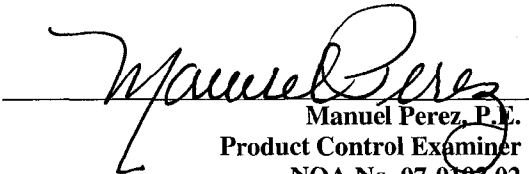
1. Notice of Acceptance No. **03-0827.08** issued to Solutia, Inc. for "Solutia Interlayers", dated 03/04/04 and expiring on 03/04/09.
2. Notice of Acceptance No. **05-1208.02** issued to E.I. DuPont de Nemours & Co., Inc. for "DuPont Butacite PVB Interlayer", dated 01/05/06 and expiring on 12/11/10.
3. Notice of Acceptance No. **03-0415.13** issued to Solutia, Inc. for "Vanceva Composites used for lamination of glass", dated 12/11/03 and expiring on 12/11/08.

**F. STATEMENTS**

1. Statement letter of conformance, dated February 21, 2007, signed and sealed by Lucas A. Turner, P.E.
2. Statement letter of no financial interest, dated February 21, 2007, signed and sealed by Lucas A. Turner, P.E.
3. Laboratory compliance letter for Test Report No. FTL- 4921, issued by Fenestration Testing Laboratory, Inc., dated June 26, 2006, signed and sealed by Edmundo Largaespada, P.E.

**G. OTHER**

1. Notice of Acceptance No. **05-0419.03**, issued to PGT Industries for their Series FD-750 Outswing Aluminum French Door and Sidelites-L.M.I., approved on 06/09/05 and expiring on 02/24/10.

  
Manuel Perez, P.E.  
Product Control Examiner  
NOA No. 07-0103.02  
Expiration Date: February 24, 2010  
Approval Date: March 8, 2007

**NOTES: OUTSWING IMPACT FRENCH DOOR(S) AND SIDE LITE(S)**

1. GLAZING OPTIONS:
  - A. 7/16" LAMI CONSISTING OF (1) LITE OF 3/16" ANNEALED GLASS AND (1) LITE OF 3/16" HEAT STRENGTHENED GLASS WITH AN .090 PVB INTERLAYER OF DUPONT BUTACITE OR SAFLEX/KEEPSAFE MAXIMUM.
  - B. 7/16" LAMI CONSISTING OF (2) LITES OF 3/16" HEAT STRENGTHENED GLASS WITH AN .090 PVB INTERLAYER OF DUPONT BUTACITE OR SAFLEX/KEEPSAFE MAXIMUM.
  - C. 7/16" LAMI CONSISTING OF (1) LITE OF 3/16" ANNEALED GLASS AND (1) LITE OF 3/16" HEAT STRENGTHENED GLASS WITH AN .075 VANCEVA INTERLAYER.
  - D. 7/16" LAMI CONSISTING OF (2) LITES OF 3/16" HEAT STRENGTHENED GLASS WITH AN .075 VANCEVA INTERLAYER.
  - E. 7/16" LAMI I.G. CONSISTING OF (1) LITE OF 3/16" TEMPERED GLASS OUTSIDE, 1/4" AIR SPACE AND (1) 7/16" LAMI GLASS ASSEMBLY INSIDE (3/16" A, .090 PVB, 3/16" HS).
  - F. 7/16" LAMI I.G. CONSISTING OF (1) LITE OF 3/16" TEMPERED GLASS OUTSIDE, 1/4" AIR SPACE AND (1) 7/16" LAMI GLASS ASSEMBLY INSIDE (3/16" A, .075 VANCEVA, 3/16" HS).
  - G. 7/16" LAMI I.G. CONSISTING OF (1) LITE OF 3/16" TEMPERED GLASS OUTSIDE, 1/4" AIR SPACE AND (1) 7/16" LAMI GLASS ASSEMBLY INSIDE (3/16" A, .075 VANCEVA, 3/16" HS).
  - H. 7/16" LAMI I.G. CONSISTING OF (1) LITE OF 3/16" TEMPERED GLASS OUTSIDE, 1/4" AIR SPACE AND (1) 7/16" LAMI GLASS ASSEMBLY INSIDE (3/16" HS, .075 VANCEVA, 3/16" HS).
2. DESIGN PRESSURES: TABLE 1, SHEET 3.
  - A. NEGATIVE DESIGN LOADS BASED ON TESTED PRESSURE AND GLASS TABLES ASTM E1300-02.
  - B. POSITIVE DESIGN LOADS BASED ON WATER TEST PRESSURE AND GLASS TABLES ASTM E1300-02.
3. CONFIGURATIONS: X, O, XX, XO, OX, XXX, XOX, OXX, OXXX, XXXX, OXXX, OR OXXX WHERE O REPRESENTS EITHER THE NARROW JAMB OR FULL JAMB SIDE LITE. ANY TWO ADJACENT X UNITS CAN BE EITHER TWO SINGLE, X DOORS OR A DOUBLE, XX DOOR. THE FRENCH DOOR ASSEMBLY BEAM IS USED TO ASSEMBLE X, XX, AND O UNITS TO MAKE THE ABOVE CONFIGURATIONS.
4. ANCHORAGE: THE 33 1/3% STRESS INCREASE HAS NOT BEEN USED IN THE DESIGN OF THIS PRODUCT. FOR ANCHORAGE REQUIREMENTS SEE SHEETS 9 THRU 11.
5. SHUTTERS ARE NOT REQUIRED.
6. SEALANT: INSTALLATION SCREWS, FRAME AND PANEL CORNERS SEALED WITH CLEAR COLORED SEALANT. VERTICAL ASSEMBLY BEAM SEAMS SEALED ON THE INTERIOR AND EXTERIOR WITH CONTRACTOR'S SEALANT.
7. REFERENCES: TEST REPORTS: FTL-4311, FTL-4315, FTL-4327, FTL-4527, FTL-4528, FTL-4529, FTL-4530 AND FTL-4921. ANSII/AF&PA NDS-2001 FOR WOOD CONSTRUCTION ADM-2000 ALUMINUM DESIGN MANUAL
8. THIS PRODUCT HAS BEEN DESIGNED & TESTED TO COMPLY WITH THE REQUIREMENTS OF THE FLORIDA BUILDING CODE, 2004 EDITION INCLUDING THE HIGH VELOCITY HURRICANE ZONE (HVHZ).

**NOA DRAWING MAP**

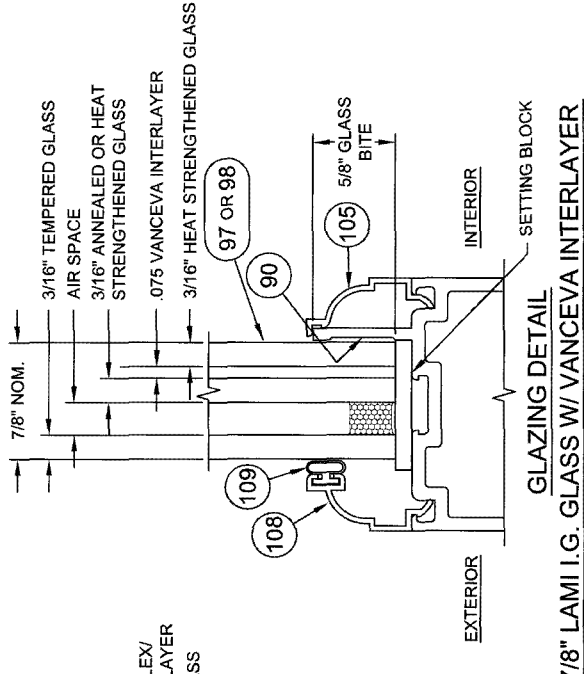
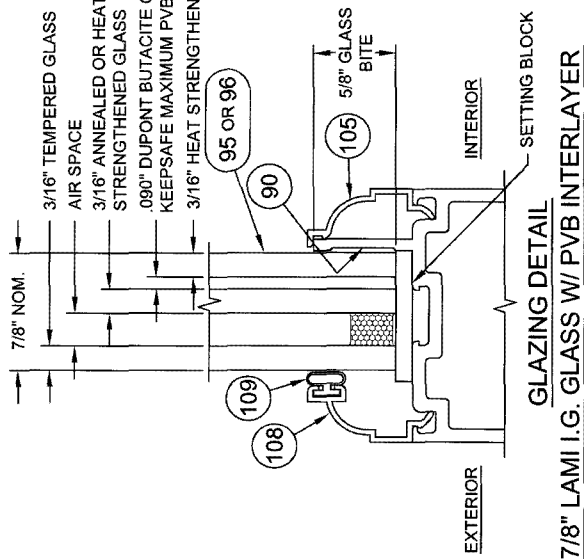
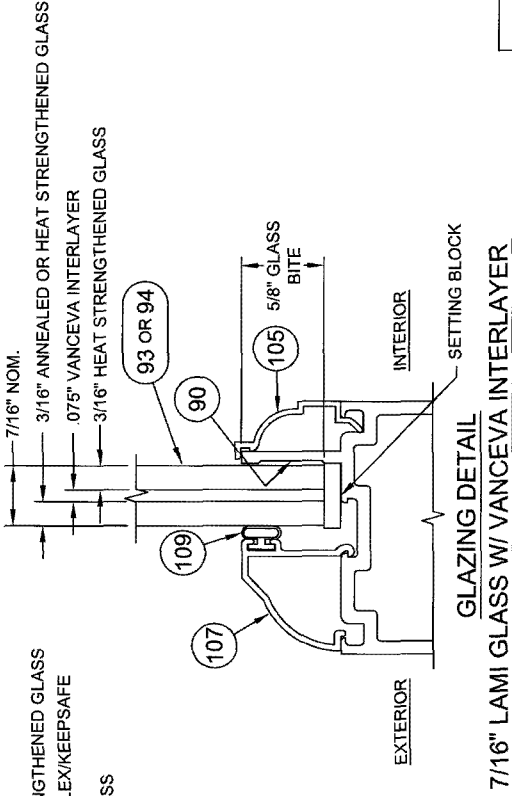
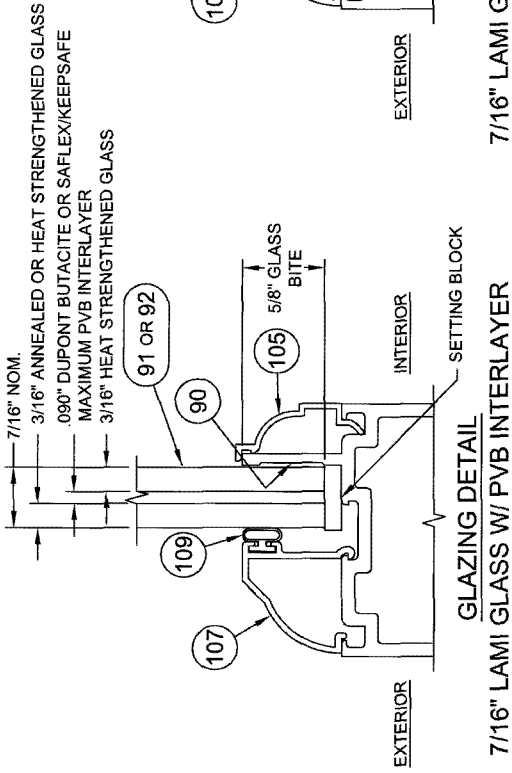
TOPIC	SHEET
GENERAL NOTES.....	1
CONFIGURATIONS.....	1
GLAZING DETAILS.....	2
DESIGN PRESSURES.....	3
ELEVATIONS.....	4
VERT. SECTIONS.....	5
HORIZ. SECTIONS.....	6
PARTS LIST.....	7
EXTRUSIONS.....	8,11
ANCHORAGE.....	9-11

PRODUCT REVISED  
 as complying with the Florida  
 Building Code  
 Acceptance No. 07-0103-02  
 Expiration Date FEB 28, 2010  
 By [Signature]  
 Miami/Orlando Product Control  
 Division

[Signature]  
 12/21/06

Lucas A. Turner, P.E.  
 PE #66201  
 Mechanical

<p>Revised By: Date: 3/25/05                  Reviewed By: Date: 10/12/06                  F.K. B                  Checked By: Date: 4/8/05                  F.K. L.T.</p>	<p>Change Notes 1, 4 AND 7, ADD VANCEVA INTERLAYER GLASS TYPES, MOVE GLAZING DETAILS TO SHEET 2 AND DP TABLES TO SHEET 3.                  REVISE ANCHORAGE, ADD SUBSILL AND ALTERNATE TOP &amp; BOTTOM RAIL.                  REVISE NOTES 4 AND 7, ADD NOTE 8.</p>	<p>1070 TECHNOLOGY DRIVE                  NOKOMIS, FL 34279                  P.O. BOX 1829                  NOKOMIS, FL 34274</p>	<p><b>PGI</b>                  Visibly Better</p>	<p>Description:                  GENERAL NOTES AND DRAWING MAP                  Title:                  ALUM. FRENCH DOOR &amp; SIDE LITES, IMPACT                  Specification:                  FD750</p>	<p>Quantity: 1 or 11                  Drawing No.: 8000-11                  Rev: B</p>
--	--	---	---	---	--



Revised By: Date: 3/28/05	Revised: NEW SHEET, ADD VANCEVA INTERLAYER GLAZING DETAILS.	Revision: B	NO CHANGE THIS SHEET
Drawn By: F.K.	Checked By: L.T.	Date: 12/23/04	Date: 4/8/05
		1070 TECHNOLOGY DRIVE NOKOMIS, FL 34275 P.O. BOX 1529 NOKOMIS, FL 34274	
Description: GLAZING DETAILS Title: ALUM. FRENCH DOOR & SIDE LITES, IMPACT		Standard: FD750 Series: FULL 2 of 11 Drawing No: 8000-11	Rev: B

PRODUCT REVISED  
 in compliance with the Florida  
 Building Code  
 Acceptance No. 07-0103-DZ  
 Expiration Date: FEB 23, 2010  
 By: *Edward J. Turner*  
 Mechanical Engineer

*Lucas A. Turner*  
 12/22/06

Lucas A. Turner, P.E.  
 PE 1682011  
 Mechanical

**TABLE 1. DESIGN PRESSURES FOR GLASS TYPES A THROUGH H**

A - 7/16" LAMI (3/16"A, .090 PVB, 3/16"HS)	FTL-4311, 4312, 4315
B - 7/16" LAMI (3/16"HS, .090 PVB, 3/16"HS)	UPGRADE FTL-4311, 4312, 4315
C - 7/16" LAMI (3/16"A, .075 VANCEVA, 3/16"HS)	FTL-4527, 4528, 4529, 4530
D - 7/16" LAMI (3/16"HS, .075 VANCEVA, 3/16"HS)	UPGRADE FTL-4527, 4528, 4529, 4530
E - 7/8" LAMI I.G. (3/16"T, 1/4" AIR SPACE, 3/16"A, .090 PVB, 3/16"HS)	FTL-4311, 4312, 4315
F - 7/8" LAMI I.G. (3/16"T, 1/4" AIR SPACE, 3/16"HS, .090 PVB, 3/16"HS)	UPGRADE FTL-4311, 4312, 4315
G - 7/8" LAMI I.G. (3/16"T, 1/4" AIR SPACE, 3/16"A, .075 VANCEVA, 3/16"HS)	FTL-4527, 4528, 4529, 4530
H - 7/8" LAMI I.G. (3/16"T, 1/4" AIR SPACE, 3/16"HS, .075 VANCEVA, 3/16"HS)	UPGRADE FTL-4527, 4528, 4529, 4530

CONFIGURATION	DOOR WIDTH	GLASS TYPE	DOOR HEIGHT				
			6 <sup>8</sup> - 79 3/4"	7 <sup>0</sup> - 83 3/4"	87 3/4"	91 3/4"	8 <sup>0</sup> - 95 3/4"
SINGLE X 3 <sup>0</sup> 37"		A,E	+70.0 -80.0	+70.0 -80.0	+70.0 -80.0	+70.0 -80.0	+70.0 -80.0
SINGLE X 3 <sup>0</sup> 37"		C,G	+100.0 -100.0	+100.0 -100.0	+100.0 -100.0	+100.0 -100.0	+100.0 -100.0
DOUBLE XX 6 <sup>0</sup> 71 3/4"		A,E	+70.0 -80.0	+70.0 -80.0	+70.0 -80.0	+70.0 -80.0	+70.0 -80.0
DOUBLE XX 6 <sup>0</sup> 71 3/4"		C,G	+100.0 -100.0	+100.0 -100.0	+100.0 -100.0	+100.0 -100.0	+100.0 -100.0

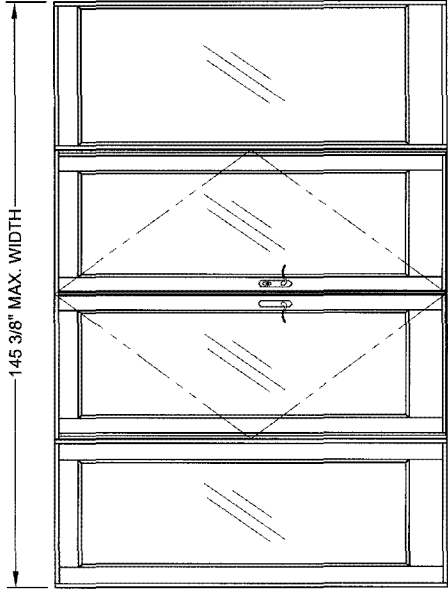
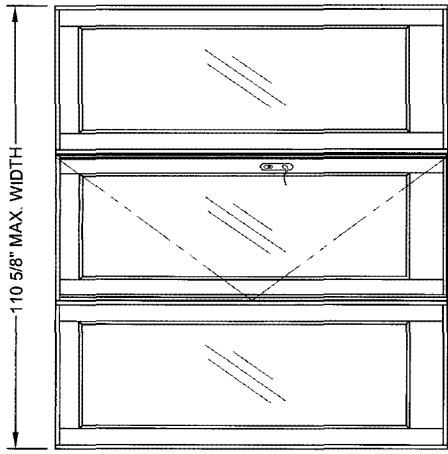
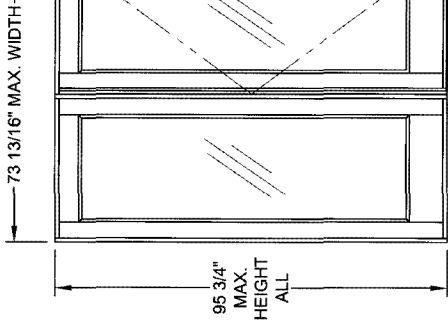
CONFIGURATION	SIDE LITE WIDTH	GLASS TYPE	SIDE LITE HEIGHT				
			6 <sup>8</sup> - 79 3/4"	7 <sup>0</sup> - 83 3/4"	87 3/4"	91 3/4"	8 <sup>0</sup> - 95 3/4"
FULL JAMB O 36 11/16"		A,E	+70.0 -80.0	+70.0 -80.0	+70.0 -80.0	+70.0 -80.0	+70.0 -80.0
FULL JAMB O 36 11/16"		C,G	+100.0 -100.0	+100.0 -100.0	+100.0 -100.0	+100.0 -100.0	+100.0 -100.0
NARROW JAMB O 36 11/16"		A,B,E,F	+70.0 -80.0	+70.0 -80.0	+70.0 -80.0	+70.0 -80.0	+70.0 -80.0
NARROW JAMB O 30 11/16"		C,G	+100.0 -100.0	+100.0 -100.0	+100.0 -100.0	+100.0 -100.0	+100.0 -100.0
NARROW JAMB O 33 11/16"		C,G	+100.0 -100.0	+100.0 -100.0	+100.0 -100.0	+100.0 -100.0	+97.4 -97.4
NARROW JAMB O 36 11/16"		C,G	+100.0 -100.0	+99.9 -99.9	+95.3 -95.3	+91.4 -91.4	+87.9 -87.9
NARROW JAMB O 36 11/16"		D,H	+100.0 -100.0	+100.0 -100.0	+100.0 -100.0	+100.0 -100.0	+100.0 -100.0

PRODUCT REVISED  
 as complying with the Florida  
 Building Code  
 Acceptance No. 07-0102-02  
 Expiration Date FEB. 28, 2010  
 By *Manuel Perez*  
 National Glass Products Control  
 Division

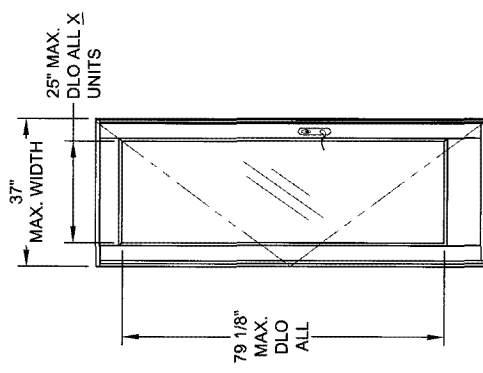
*Z...*  
 12/2/06

Lucas A. Turner, P.E.  
 PE #95201  
 Mechanical

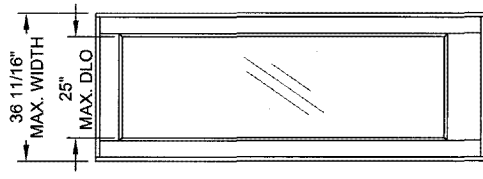
Reviser By: Date: 3/28/05 Revised By: Date: 10/12/05 E.K. Revised By: Date: Checked By: Date: 4/8/05 L.T.	NEW SIZ. EXPAND TABLE 1 TO INCLUDE ALL GLASS TYPES & CONFIGURATIONS UPDATE TABLE 1 TO ASTM E 1390-02	1070 TECHNOLOGY DRIVE NOKOMIS, FL 34275 P.O. BOX 1529 NOKOMIS, FL 34274	 Vitrally Better	DESIGN PRESSURES THE ALUM. FRENCH DOOR & SIDE LITES, IMPACT	Revision No. PD750 Scale: NTS Sheet: 3 of 11 Drawing No. 8000-11 Title: B
--	---	--	--	---	---



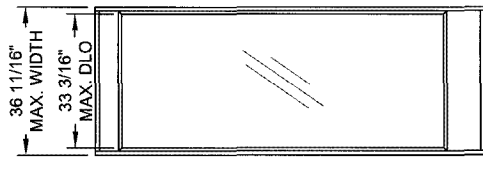
**OX OR XO**



**OXO**



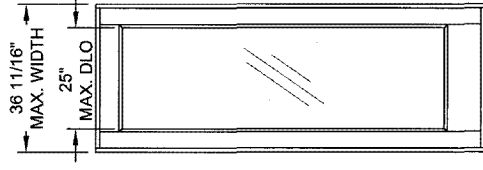
**OXOXO (SHOWING EACH VERSION SIDELITE)**



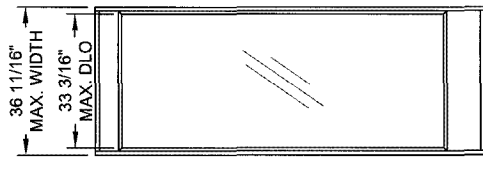
**X**

**NOTES:**  
 1. CONFIGURATIONS WITH SIDE LITES CAN BE EITHER NARROW JAMB OR FULL JAMB VERSION.  
 2. FOR ANCHOR SPACING AND DETAILS SEE SHEETS 9 THROUGH 11.  
 3. FOR VERTICAL SECTIONS SEE SHEET 5 AND FOR HORIZONTAL SECTIONS SEE SHEET 6.

**XX**



**O (FULL JAMB)**



**O (NARROW JAMB)**

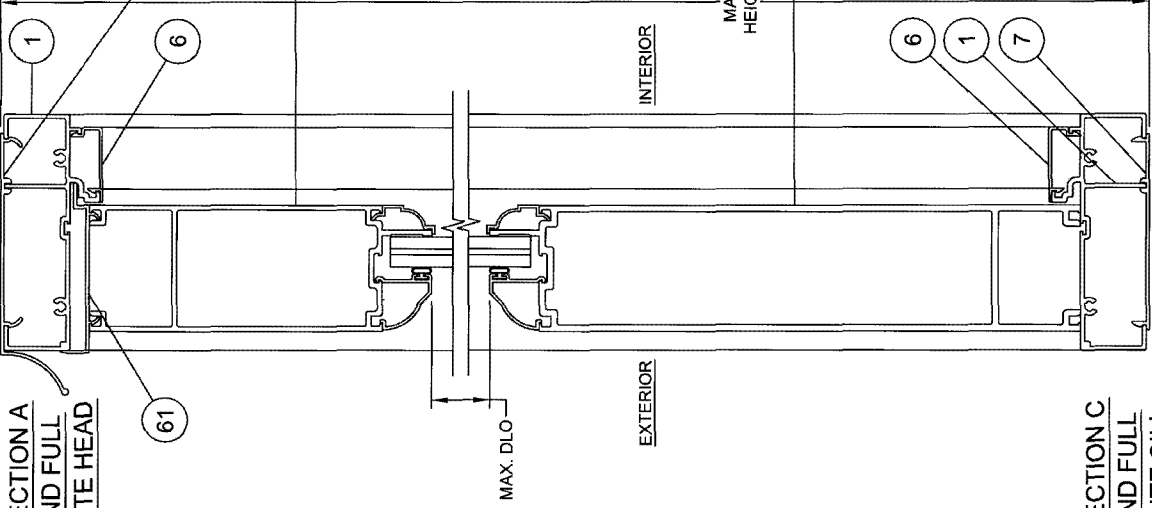
Revised By: F.K.	Date: 02/26/05	Revision: 1	Update Sheet References: NOTES 2 AND 3
Revised By: F.K.	Date: 10/12/08	Revision: 2	NO CHANGE THIS SHEET
Revised By: F.K.	Date: 12/23/04	Revision: 3	
Drawn By: L.T.	Date: 4/8/05		
<b>PGI</b> Visible Better			
1070 TECHNOLOGY DRIVE NOKOMIS, FL 34275 P.O. BOX 1539 NOKOMIS, FL 34274			
<b>EXAMPLE ELEVATIONS</b>			
<b>ALUM. FRENCH DOOR &amp; SIDE LITES, IMPACT</b>			
Scale: NTS	Sheet: 4 of 11	Drawing No: 8000-11	Rev: B

PRODUCT REVISED  
 as complying with the Florida  
 Building Code  
 Approval No. 07-0187-02  
 Expiration Date FEB 24, 2010  
 By: *Michael Dwyer*  
 Product Control  
 Division

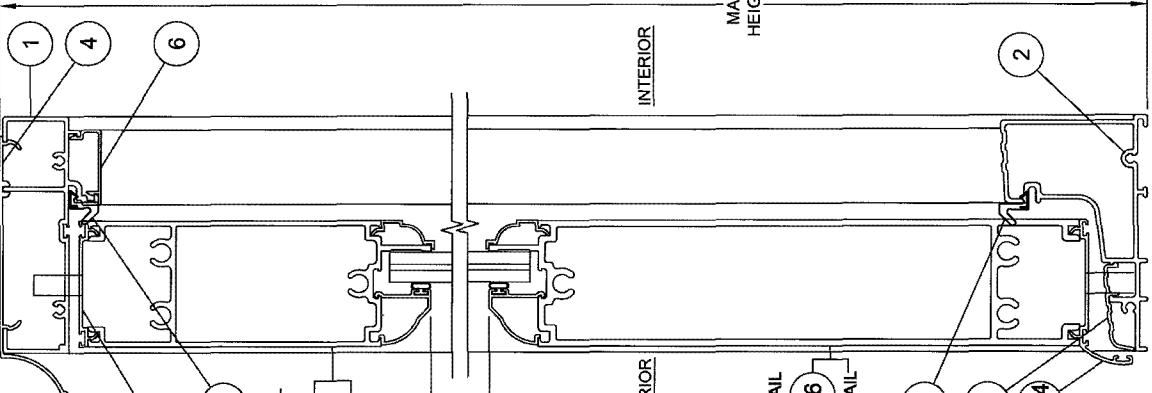
*L.T.*  
 12/23/06

Lucas A. Turner, P. E.  
 PE #58201  
 Mechanical

**VERTICAL SECTION A  
NARROW AND FULL  
JAMB SIDE LITE HEAD**



**VERTICAL SECTION B  
OUTSWING HEAD**



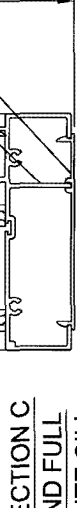
ORIGINAL VERSION TOP RAIL  
ALTERNATE VERSION TOP RAIL

ORIGINAL VERSION BOTTOM RAIL  
ALTERNATE VERSION BOTTOM RAIL

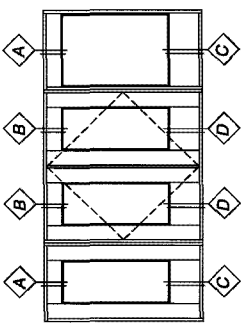
ORIGINAL VERSION TOP RAIL  
ALTERNATE VERSION TOP RAIL

ORIGINAL VERSION BOTTOM RAIL  
ALTERNATE VERSION BOTTOM RAIL

**VERTICAL SECTION C  
NARROW AND FULL  
JAMB SIDE LITE SILL**



**VERTICAL SECTION D  
OUTSWING SILL**



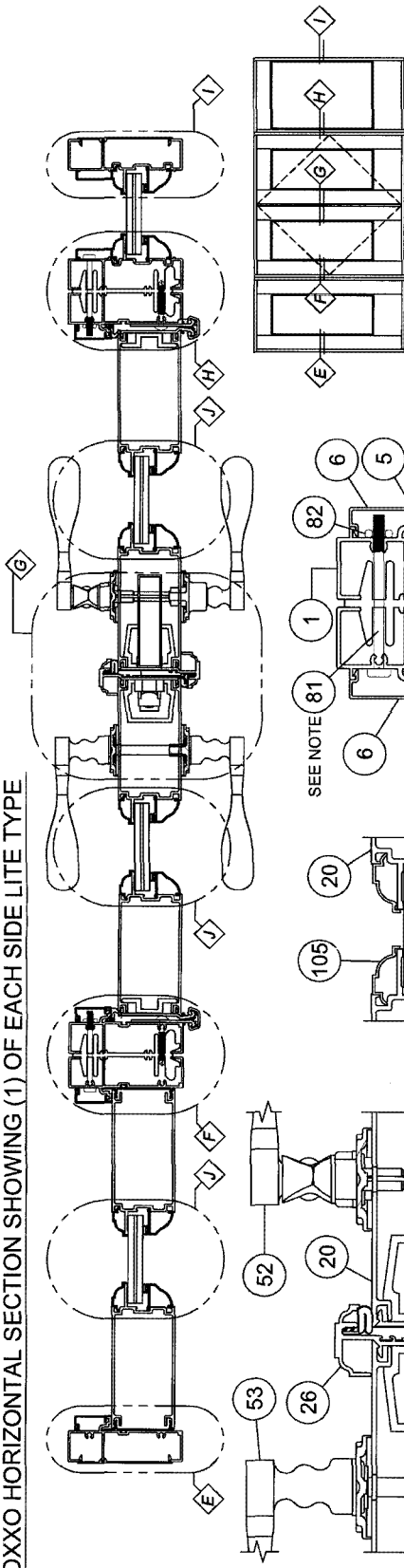
PRODUCT REVISED  
in compliance with the Florida  
Building Code  
Acceptance No. 07-0103.02  
Approval Date FEB 24, 2010  
The Florida State  
Building Code Council  
Tallahassee, Florida

*Handwritten signature*  
12/2/06

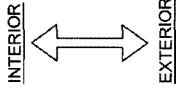
Lucas A. Turner, P.E.  
PE #8201  
Mechanical

Revised By: F.K.	Date: 3/28/05	Revision: A	NO CHANGE THIS SHEET
Revised By: F.K.	Date: 10/12/06	Revision: B	REVISE ITEM 3. SHOW ALTERNATE TOP AND BOTTOM RAIL EXTRUSION.
Revised By: F.K.	Date: 12/23/04	Revision: C	
Drawn By: F.K.	Date: 12/23/04	Checked By: L.T.	Date: 4/8/05
Description: VERTICAL SECTIONS			Sheet: 5 of 11
Title: ALUM. FRENCH DOOR & SIDE LITES, IMPACT			Drawing No: 8000-11
Standard: FD750	Scale: 1/2	Rev: B	
1070 TECHNOLOGY DRIVE NOKOMIS, FL 34275 P.O. BOX 1629 NOKOMIS, FL 34274			
PGI Visibly Better			

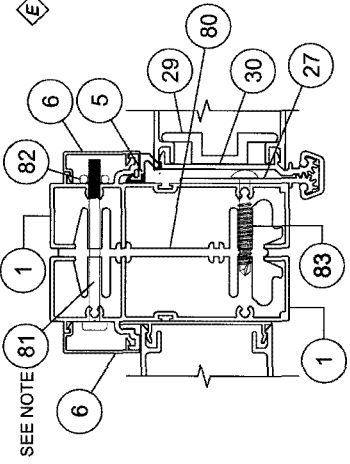
OXXO HORIZONTAL SECTION SHOWING (1) OF EACH SIDE LITE TYPE



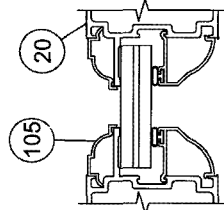
NOTE: ASSEMBLY HARDWARE QTY (3), 11" FROM TOP & BOTTOM AND ONE AT MIDSPAN



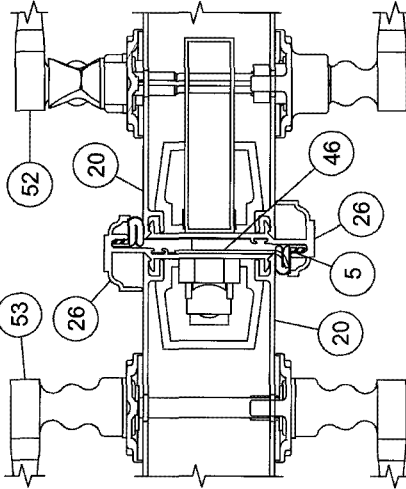
DETAIL F  
FULL JAMB SIDE LITE  
(AT HINGE JAMB)



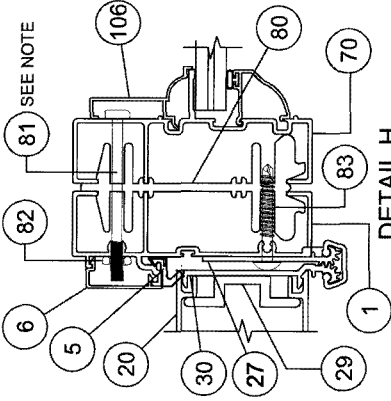
DETAIL J  
SLAB AT  
GLASS BED



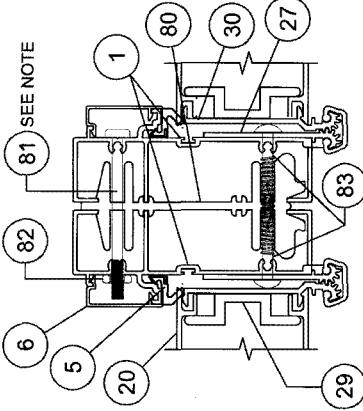
DETAIL G  
STILES AT ASTRAGAL



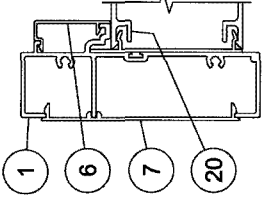
DETAIL H  
NARROW JAMB SIDE LITE  
(AT HINGE JAMB)



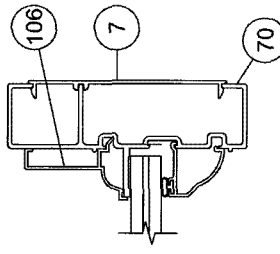
DETAIL K  
HINGE JAMB TO HINGE JAMB  
(NOT SHOWN ABOVE)



DETAIL E  
JAMB, FULL JAMB  
SIDE LITE



DETAIL I  
JAMB, NARROW  
JAMB SIDE LITE



Revised By: F.K.	Date: 3/25/05	Revision: A	NO CHANGE THIS SHEET
Revised By: F.K.	Date: 10/12/06	Revision: B	NO CHANGE THIS SHEET
Drawn By: F.K.	Date: 12/23/04	Checked By: L.T.	Date: 4/8/05

Description: HORIZONTAL SECTION DETAILS			
Title: ALUM. FRENCH DOOR & SIDE LITES, IMPACT			
Scale: 1/2	Sheet: 6	of 11	Rev: B
Standard: PD750	Drawing No: 8000-11		

PRODUCT REVIEWED  
in compliance with the Florida  
Building Code.  
Amended Date: 07-01-03-02  
Superseding Date: FEB 21, 2010  
By: *Edward Bell*  
Director of Quality Product Control  
ALUMINUM

*Z*  
*12/21/06*

LUCAS A. TURNER, P.E.  
PE #65201  
Mechanical

FD750 DOOR(S)		
ITEM	DWG#	DESCRIPTION
1	8006	FRAME - HEAD & HINGE JAMB
2	8003A	OUT-SWING SILL
3	8004C	OUT-SWING SILL COVER
4	8008	DRIP CAP
5		HEAD, SILL & JAMB WEATHERSTRIP (SCHEDULE)
6	8007	SCREW COVER
7	8009	INSTALL PLATE
8		FRAME ASSEMBLY SCREW #8 X 1" PH QUAD
9	8032	ASTRAGAL END SEAL
<b>DOOR PANEL</b>		
5		HEAD, SILL & JAMB WEATHERSTRIP (SCHEDULE)
20	8012	STILE
21	8014	TOP RAIL, (THREADED ROD DESIGN)
22	8013	BOTTOM RAIL, (THREADED ROD DESIGN)
23	8017	TOP SWEEP
24	8016	BOTTOM SWEEP
25		SWEEP SCREWS, #4 X 1/2" PHILL PH
26	8015	ASTRAGAL, ACTIVE & INACTIVE
27	8021B	GEAR HINGE, JAMB SIDE
28	8020A	GEAR HINGE, COVER
29	8018	GEAR HINGE, BACK-UP PLATE
30	8019A	GEAR HINGE, DOOR SIDE
31	8035	GEAR HINGE, BEARING
32		GEAR HINGE, SET SCREW #6-32 X 1/4"
33		GEAR HINGE, MITG. SCREW #12 X 3/4" TRUSS HD
34		GEAR HINGE, MITG. SCREW #12 X 1/2" TRUSS HD
35		THREADED ROD 5/16-18 X 3/6"
36		FLANGED HEX NUT 5/16-18
37	8039	TRUSS CLAMP
38	8043	SS GEAR LATCH MECHANISM (ASHLAND)
39	8039	LOCK BLOCK
40		LATCH ASSY SCREWS #8 X 2" SS PHILL TR HD
41	8037	SS SHOOT BOLT ROD (SULLIVAN)
42	8045	STANDARD FLUSH BOLTS W/SS ROD (SULLIVAN)
43	8031	SHOOT BOLT GUIDE
44		SHOOT BOLT GUIDE & STRIKE SCREW 8-32 X 3/8" SS PHILL TR HD
45	8038R	RIGHT STRIKE PLATE AT ASTRAGAL (ACTIVE/HINGED LEFT)
46	8038L	LEFT STRIKE PLATE AT ASTRAGAL (ACTIVE/HINGED RIGHT)
47		TRIKE PLATE SCREWS 8-32 X 3/8" SS PHILL TR HD
48		STRIKE PLATE MIDDLE SCREW 6-24 X 1/2" FH
49	8036	STRIKE PLATE AT HEAD & SILL
50		HEAD STRIKE SCREWS SS 8 X 1/2 PHILL PH
51		STRIKE PLATE SCREWS @SILL SS 8 X 1/2 PHILL UNDERCUT PH
52	8041	ACTIVE TRIM SET (ASHLAND)
53	8042	PASSIVE TRIM SET (ASHLAND)
54	8044	STAINLESS STEEL PASSIVE LOCK (GEAR (ASHLAND)
55	8014A	TOP RAIL (LAG BOLT DESIGN)
56	8013A	BOTTOM RAIL (LAG BOLT DESIGN)
57		5/16" X 3.12" LAG BOLTS

ITEM	DWG#	DESCRIPTION	PGT#
1	8006	FRAME - HEAD, SILL & JAMB	68006
4	8008	DRIP CAP	68008
6	8007	SCREW COVER	68007
7	8009	INSTALL PLATE	68009
8		FRAME ASSEMBLY SCREW #8 X 1" PH QUAD	781PQA
20	8012	STILE	68012
21	8014	TOP RAIL	68014
22	8013	BOTTOM RAIL	68013
35		THREADED ROD 5/16-18 X 3/6"	6T80DA
36		FLANGED HEX NUT 5/16-18	7999NUTA
37	8039	TRUSS CLAMP	60378M
60		#8 X 3/4" PH SQ DRIVE TEK SCREW	78X34PSTW
61	8028	SIDE LITE HEAD TRIM	68028
62	8029	SIDE LITE JAMB TRIM	68029
<b>FD750 NARROW JAMB SIDE LITE</b>			
1	8006	FRAME - HEAD & SILL	68006
4	8008	DRIP CAP	68008
6	8007	SCREW COVER	68007
7	8009	INSTALL PLATE	68009
8		FRAME ASSEMBLY SCREW #8 X 1" PH QUAD	781PQA
21	8014	TOP RAIL	68014
22	8013	BOTTOM RAIL	68013
35		THREADED ROD 5/16-18 X 3/6"	6T80DA
36		FLANGED HEX NUT 5/16-18	7999NUTA
37	8039	TRUSS CLAMP	60378M
60		#8 X 3/4" PH SQ DRIVE TEK SCREW	78X34PSTW
61	8028	SIDE LITE HEAD TRIM	68028
70	8010	FRAME JAMB	68010
<b>ASSEMBLY KIT</b>			
80	8033B	FRENCH DOOR ASSEMBLY BEAM	68033B
81		#10-24 X 2 1/2" PH SCREW	
82		#10-24 HEX NUT	
83		#12 X 1 1/2" TR HD TEK SCREW	
84	8056	SUBSILL (OPTIONAL)	68056
<b>GLASS, BEADS &amp; SILICONE</b>			
90		GLAZING SEALANT, DOW CORNING 899, 983, 995 OR EQUIVALENT	
91		7/16" LAMINATED GLASS (3/16" ANN., .090 PVB, 3/16" HS)	
92		7/16" LAMINATED GLASS (3/16" HS., .090 PVB, 3/16" HS)	
93		7/16" LAMINATED GLASS (3/16" ANN., .075 VANCEVA, 3/16" HS)	
94		7/16" LAMINATED GLASS (3/16" HS., .075 VANCEVA, 3/16" HS)	
95		7/8" LAM I.G. (3/16" T, 1/4" SPACE, 3/16" ANN., .090 PVB, 3/16" HS)	
96		7/8" LAM I.G. (3/16" T, 1/4" SPACE, 3/16" HS., .090 PVB, 3/16" HS)	
97		7/8" LAM I.G. (3/16" T, 1/4" SPACE, 3/16" ANN., .075 VANCEVA, 3/16" HS)	
98		7/8" LAM I.G. (3/16" T, 1/4" SPACE, 3/16" HS., .075 VANCEVA, 3/16" HS)	
105	8022	BACK BEAD	68022
106	8026A	SL BACK BEAD	68026A
107	8025A	7/16" BEAD	68025A
108	8024A	7/8" IG BEAD	68024A
109	1224	WVNYL BULB W/STP (THICK)	6T1247

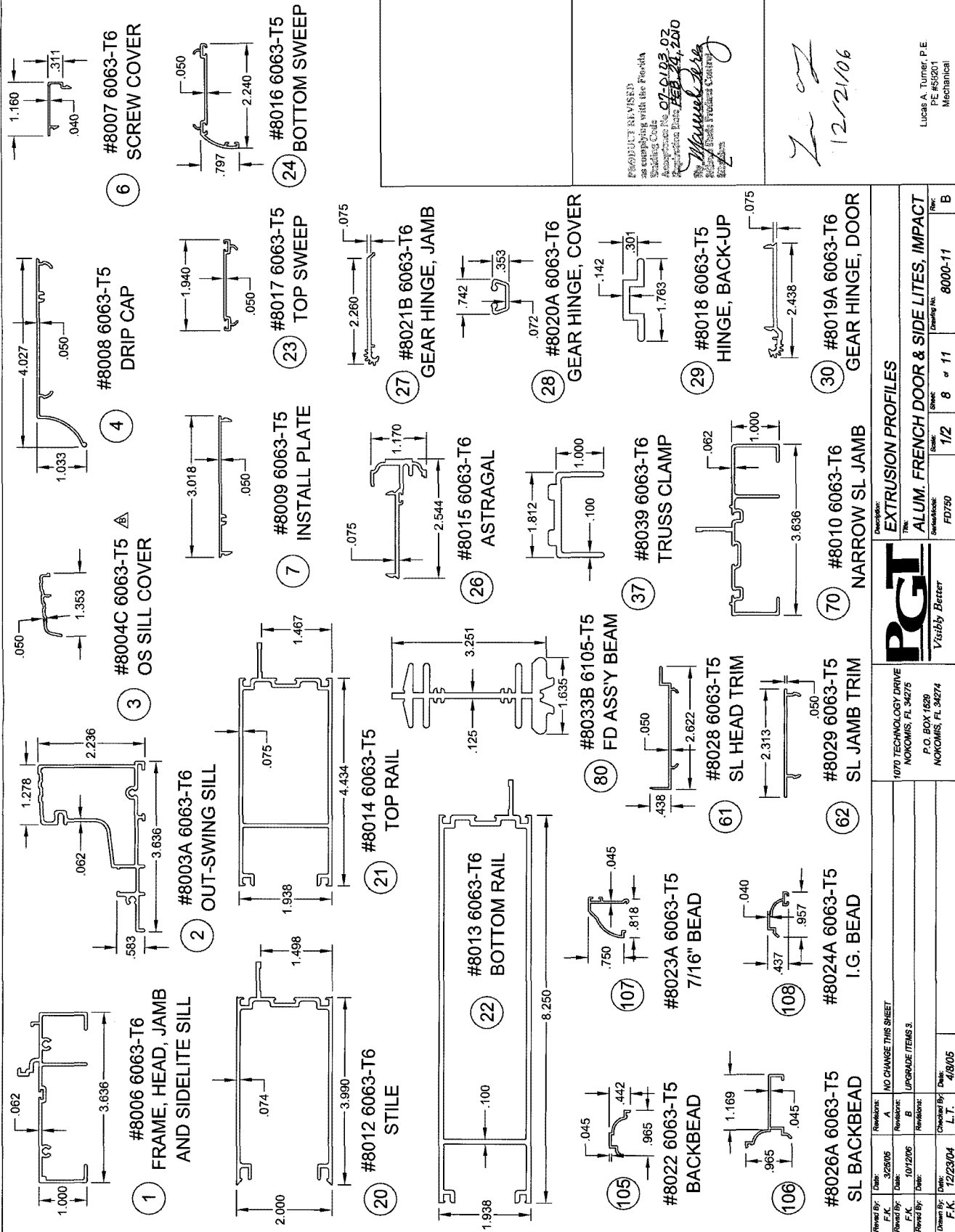
ITEM	DWG#	DESCRIPTION	PGT#
1	8006	FRAME - HEAD, SILL & JAMB	68006
4	8008	DRIP CAP	68008
6	8007	SCREW COVER	68007
7	8009	INSTALL PLATE	68009
8		FRAME ASSEMBLY SCREW #8 X 1" PH QUAD	781PQA
21	8014	TOP RAIL	68014
22	8013	BOTTOM RAIL	68013
35		THREADED ROD 5/16-18 X 3/6"	6T80DA
36		FLANGED HEX NUT 5/16-18	7999NUTA
37	8039	TRUSS CLAMP	60378M
60		#8 X 3/4" PH SQ DRIVE TEK SCREW	78X34PSTW
61	8028	SIDE LITE HEAD TRIM	68028
70	8010	FRAME JAMB	68010
<b>ASSEMBLY KIT</b>			
80	8033B	FRENCH DOOR ASSEMBLY BEAM	68033B
81		#10-24 X 2 1/2" PH SCREW	
82		#10-24 HEX NUT	
83		#12 X 1 1/2" TR HD TEK SCREW	
84	8056	SUBSILL (OPTIONAL)	68056
<b>GLASS, BEADS &amp; SILICONE</b>			
90		GLAZING SEALANT, DOW CORNING 899, 983, 995 OR EQUIVALENT	
91		7/16" LAMINATED GLASS (3/16" ANN., .090 PVB, 3/16" HS)	
92		7/16" LAMINATED GLASS (3/16" HS., .090 PVB, 3/16" HS)	
93		7/16" LAMINATED GLASS (3/16" ANN., .075 VANCEVA, 3/16" HS)	
94		7/16" LAMINATED GLASS (3/16" HS., .075 VANCEVA, 3/16" HS)	
95		7/8" LAM I.G. (3/16" T, 1/4" SPACE, 3/16" ANN., .090 PVB, 3/16" HS)	
96		7/8" LAM I.G. (3/16" T, 1/4" SPACE, 3/16" HS., .090 PVB, 3/16" HS)	
97		7/8" LAM I.G. (3/16" T, 1/4" SPACE, 3/16" ANN., .075 VANCEVA, 3/16" HS)	
98		7/8" LAM I.G. (3/16" T, 1/4" SPACE, 3/16" HS., .075 VANCEVA, 3/16" HS)	
105	8022	BACK BEAD	68022
106	8026A	SL BACK BEAD	68026A
107	8025A	7/16" BEAD	68025A
108	8024A	7/8" IG BEAD	68024A
109	1224	WVNYL BULB W/STP (THICK)	6T1247

ITEM	DWG#	DESCRIPTION	PGT#
1	8006	FRAME - HEAD, SILL & JAMB	68006
4	8008	DRIP CAP	68008
6	8007	SCREW COVER	68007
7	8009	INSTALL PLATE	68009
8		FRAME ASSEMBLY SCREW #8 X 1" PH QUAD	781PQA
21	8014	TOP RAIL	68014
22	8013	BOTTOM RAIL	68013
35		THREADED ROD 5/16-18 X 3/6"	6T80DA
36		FLANGED HEX NUT 5/16-18	7999NUTA
37	8039	TRUSS CLAMP	60378M
60		#8 X 3/4" PH SQ DRIVE TEK SCREW	78X34PSTW
61	8028	SIDE LITE HEAD TRIM	68028
70	8010	FRAME JAMB	68010
<b>ASSEMBLY KIT</b>			
80	8033B	FRENCH DOOR ASSEMBLY BEAM	68033B
81		#10-24 X 2 1/2" PH SCREW	
82		#10-24 HEX NUT	
83		#12 X 1 1/2" TR HD TEK SCREW	
84	8056	SUBSILL (OPTIONAL)	68056
<b>GLASS, BEADS &amp; SILICONE</b>			
90		GLAZING SEALANT, DOW CORNING 899, 983, 995 OR EQUIVALENT	
91		7/16" LAMINATED GLASS (3/16" ANN., .090 PVB, 3/16" HS)	
92		7/16" LAMINATED GLASS (3/16" HS., .090 PVB, 3/16" HS)	
93		7/16" LAMINATED GLASS (3/16" ANN., .075 VANCEVA, 3/16" HS)	
94		7/16" LAMINATED GLASS (3/16" HS., .075 VANCEVA, 3/16" HS)	
95		7/8" LAM I.G. (3/16" T, 1/4" SPACE, 3/16" ANN., .090 PVB, 3/16" HS)	
96		7/8" LAM I.G. (3/16" T, 1/4" SPACE, 3/16" HS., .090 PVB, 3/16" HS)	
97		7/8" LAM I.G. (3/16" T, 1/4" SPACE, 3/16" ANN., .075 VANCEVA, 3/16" HS)	
98		7/8" LAM I.G. (3/16" T, 1/4" SPACE, 3/16" HS., .075 VANCEVA, 3/16" HS)	
105	8022	BACK BEAD	68022
106	8026A	SL BACK BEAD	68026A
107	8025A	7/16" BEAD	68025A
108	8024A	7/8" IG BEAD	68024A
109	1224	WVNYL BULB W/STP (THICK)	6T1247

ITEM	DWG#	DESCRIPTION	PGT#
1	8006	FRAME - HEAD, SILL & JAMB	68006
4	8008	DRIP CAP	68008
6	8007	SCREW COVER	68007
7	8009	INSTALL PLATE	68009
8		FRAME ASSEMBLY SCREW #8 X 1" PH QUAD	781PQA
21	8014	TOP RAIL	68014
22	8013	BOTTOM RAIL	68013
35		THREADED ROD 5/16-18 X 3/6"	6T80DA
36		FLANGED HEX NUT 5/16-18	7999NUTA
37	8039	TRUSS CLAMP	60378M
60		#8 X 3/4" PH SQ DRIVE TEK SCREW	78X34PSTW
61	8028	SIDE LITE HEAD TRIM	68028
70	8010	FRAME JAMB	68010
<b>ASSEMBLY KIT</b>			
80	8033B	FRENCH DOOR ASSEMBLY BEAM	68033B
81		#10-24 X 2 1/2" PH SCREW	
82		#10-24 HEX NUT	
83		#12 X 1 1/2" TR HD TEK SCREW	
84	8056	SUBSILL (OPTIONAL)	68056
<b>GLASS, BEADS &amp; SILICONE</b>			
90		GLAZING SEALANT, DOW CORNING 899, 983, 995 OR EQUIVALENT	
91		7/16" LAMINATED GLASS (3/16" ANN., .090 PVB, 3/16" HS)	
92		7/16" LAMINATED GLASS (3/16" HS., .090 PVB, 3/16" HS)	
93		7/16" LAMINATED GLASS (3/16" ANN., .075 VANCEVA, 3/16" HS)	
94		7/16" LAMINATED GLASS (3/16" HS., .075 VANCEVA, 3/16" HS)	
95		7/8" LAM I.G. (3/16" T, 1/4" SPACE, 3/16" ANN., .090 PVB, 3/16" HS)	
96		7/8" LAM I.G. (3/16" T, 1/4" SPACE, 3/16" HS., .090 PVB, 3/16" HS)	
97		7/8" LAM I.G. (3/16" T, 1/4" SPACE, 3/16" ANN., .075 VANCEVA, 3/16" HS)	
98		7/8" LAM I.G. (3/16" T, 1/4" SPACE, 3/16" HS., .075 VANCEVA, 3/16" HS)	
105	8022	BACK BEAD	68022
106	8026A	SL BACK BEAD	68026A
107	8025A	7/16" BEAD	68025A
108	8024A	7/8" IG BEAD	68024A
109	1224	WVNYL BULB W/STP (THICK)	6T1247

ITEM	DWG#	DESCRIPTION	PGT#
1	8006	FRAME - HEAD, SILL & JAMB	68006
4	8008	DRIP CAP	68008
6	8007	SCREW COVER	68007
7	8009	INSTALL PLATE	68009
8		FRAME ASSEMBLY SCREW #8 X 1" PH QUAD	781PQA
21	8014	TOP RAIL	68014
22	8013	BOTTOM RAIL	68013
35		THREADED ROD 5/16-18 X 3/6"	6T80DA
36		FLANGED HEX NUT 5/16-18	7999NUTA
37	8039	TRUSS CLAMP	60378M
60		#8 X 3/4" PH SQ DRIVE TEK SCREW	78X34PSTW
61	8028	SIDE LITE HEAD TRIM	68028
70	8010	FRAME JAMB	68010
<b>ASSEMBLY KIT</b>			
80	8033B	FRENCH DOOR ASSEMBLY BEAM	68033B
81		#10-24 X 2 1/2" PH SCREW	
82		#10-24 HEX NUT	
83		#12 X 1 1/2" TR HD TEK SCREW	
84	8056	SUBSILL (OPTIONAL)	68056
<b>GLASS, BEADS &amp; SILICONE</b>			
90		GLAZING SEALANT, DOW CORNING 899, 983, 995 OR EQUIVALENT	
91		7/16" LAMINATED GLASS (3/16" ANN., .090 PVB, 3/16" HS)	
92		7/16" LAMINATED GLASS (3/16" HS., .090 PVB, 3/16" HS)	
93		7/16" LAMINATED GLASS (3/16" ANN., .075 VANCEVA, 3/16" HS)	
94		7/16" LAMINATED GLASS (3/16" HS., .075 VANCEVA, 3/16" HS)	
95		7/8" LAM I.G. (3/16" T, 1/4" SPACE, 3/16" ANN., .090 PVB, 3/16" HS)	
96		7/8" LAM I.G. (3/16" T, 1/4" SPACE, 3/16" HS., .090 PVB, 3/16" HS)	
97		7/8" LAM I.G. (3/16" T, 1/4" SPACE, 3/16" ANN., .075 VANCEVA, 3/16" HS)	
98		7/8" LAM I.G. (3/16" T, 1/4" SPACE, 3/16" HS., .075 VANCEVA, 3/16" HS)	
105	8022	BACK BEAD	68022
106	8026A	SL BACK BEAD	68026A
107	8025A	7/16" BEAD	68025A
108	8024A	7/8" IG BEAD	68024A
109	1224	WVNYL BULB W/STP (THICK)	6T1247

ITEM	DWG#	DESCRIPTION
------	------	-------------

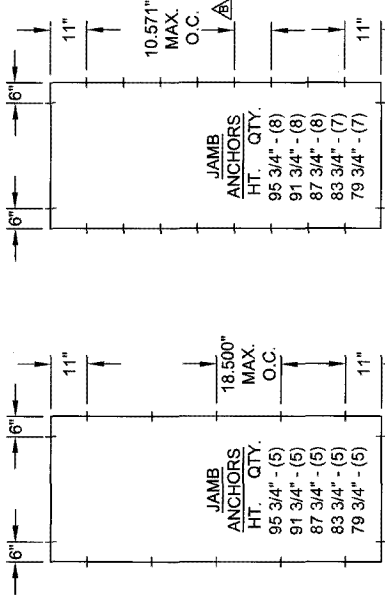


PRODUCT REVISED  
 in compliance with the Florida  
 Building Code  
 Amendment No. 07-01/03 02  
 effective date: Feb 14, 2010  
*Manuel Lopez*  
 Project Manager  
 305-886-3333

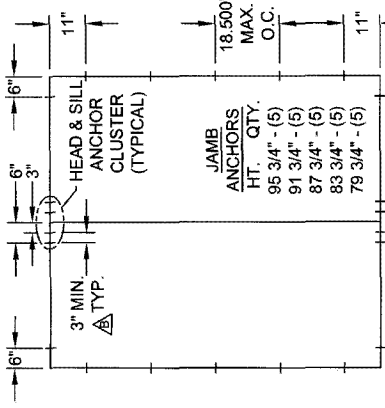
*Z...*  
 12/21/06

Lucas A. Turner, P.E.  
 PE #51201  
 Mechanical

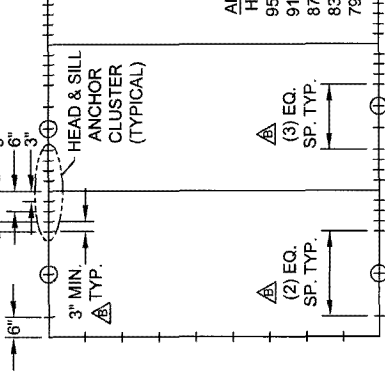
Description:		Drawing No.		Rev.	
EXTRUSION PROFILES		8000-11		B	
ALUM. FRENCH DOOR & SIDE LITES, IMPACT		8000-11		B	
PGI		8000-11		B	
1070 TECHNOLOGY DRIVE		8000-11		B	
NOKOMIS, FL 34275		8000-11		B	
P.O. BOX 1629		8000-11		B	
NOKOMIS, FL 34274		8000-11		B	
1070 TECHNOLOGY DRIVE		8000-11		B	
NOKOMIS, FL 34275		8000-11		B	
P.O. BOX 1629		8000-11		B	
NOKOMIS, FL 34274		8000-11		B	
1070 TECHNOLOGY DRIVE		8000-11		B	
NOKOMIS, FL 34275		8000-11		B	
P.O. BOX 1629		8000-11		B	
NOKOMIS, FL 34274		8000-11		B	
1070 TECHNOLOGY DRIVE		8000-11		B	
NOKOMIS, FL 34275		8000-11		B	
P.O. BOX 1629		8000-11		B	
NOKOMIS, FL 34274		8000-11		B	
1070 TECHNOLOGY DRIVE		8000-11		B	
NOKOMIS, FL 34275		8000-11		B	
P.O. BOX 1629		8000-11		B	
NOKOMIS, FL 34274		8000-11		B	
1070 TECHNOLOGY DRIVE		8000-11		B	
NOKOMIS, FL 34275		8000-11		B	
P.O. BOX 1629		8000-11		B	
NOKOMIS, FL 34274		8000-11		B	
1070 TECHNOLOGY DRIVE		8000-11		B	
NOKOMIS, FL 34275		8000-11		B	
P.O. BOX 1629		8000-11		B	
NOKOMIS, FL 34274		8000-11		B	
1070 TECHNOLOGY DRIVE		8000-11		B	
NOKOMIS, FL 34275		8000-11		B	
P.O. BOX 1629		8000-11		B	
NOKOMIS, FL 34274		8000-11		B	
1070 TECHNOLOGY DRIVE		8000-11		B	
NOKOMIS, FL 34275		8000-11		B	
P.O. BOX 1629		8000-11		B	
NOKOMIS, FL 34274		8000-11		B	
1070 TECHNOLOGY DRIVE		8000-11		B	
NOKOMIS, FL 34275		8000-11		B	
P.O. BOX 1629		8000-11		B	
NOKOMIS, FL 34274		8000-11		B	
1070 TECHNOLOGY DRIVE		8000-11		B	
NOKOMIS, FL 34275		8000-11		B	
P.O. BOX 1629		8000-11		B	
NOKOMIS, FL 34274		8000-11		B	
1070 TECHNOLOGY DRIVE		8000-11		B	
NOKOMIS, FL 34275		8000-11		B	
P.O. BOX 1629		8000-11		B	
NOKOMIS, FL 34274		8000-11		B	
1070 TECHNOLOGY DRIVE		8000-11		B	
NOKOMIS, FL 34275		8000-11		B	
P.O. BOX 1629		8000-11		B	
NOKOMIS, FL 34274		8000-11		B	
1070 TECHNOLOGY DRIVE		8000-11		B	
NOKOMIS, FL 34275		8000-11		B	
P.O. BOX 1629		8000-11		B	
NOKOMIS, FL 34274		8000-11		B	
1070 TECHNOLOGY DRIVE		8000-11		B	
NOKOMIS, FL 34275		8000-11		B	
P.O. BOX 1629		8000-11		B	
NOKOMIS, FL 34274		8000-11		B	
1070 TECHNOLOGY DRIVE		8000-11		B	
NOKOMIS, FL 34275		8000-11		B	
P.O. BOX 1629		8000-11		B	
NOKOMIS, FL 34274		8000-11		B	
1070 TECHNOLOGY DRIVE		8000-11		B	
NOKOMIS, FL 34275		8000-11		B	
P.O. BOX 1629		8000-11		B	
NOKOMIS, FL 34274		8000-11		B	
1070 TECHNOLOGY DRIVE		8000-11		B	
NOKOMIS, FL 34275		8000-11		B	
P.O. BOX 1629		8000-11		B	
NOKOMIS, FL 34274		8000-11		B	
1070 TECHNOLOGY DRIVE		8000-11		B	
NOKOMIS, FL 34275		8000-11		B	
P.O. BOX 1629		8000-11		B	
NOKOMIS, FL 34274		8000-11		B	
1070 TECHNOLOGY DRIVE		8000-11		B	
NOKOMIS, FL 34275		8000-11		B	
P.O. BOX 1629		8000-11		B	
NOKOMIS, FL 34274		8000-11		B	
1070 TECHNOLOGY DRIVE		8000-11		B	
NOKOMIS, FL 34275		8000-11		B	
P.O. BOX 1629		8000-11		B	
NOKOMIS, FL 34274		8000-11		B	
1070 TECHNOLOGY DRIVE		8000-11		B	
NOKOMIS, FL 34275		8000-11		B	
P.O. BOX 1629		8000-11		B	
NOKOMIS, FL 34274		8000-11		B	
1070 TECHNOLOGY DRIVE		8000-11		B	
NOKOMIS, FL 34275		8000-11		B	
P.O. BOX 1629		8000-11		B	
NOKOMIS, FL 34274		8000-11		B	
1070 TECHNOLOGY DRIVE		8000-11		B	
NOKOMIS, FL 34275		8000-11		B	
P.O. BOX 1629		8000-11		B	
NOKOMIS, FL 34274		8000-11		B	
1070 TECHNOLOGY DRIVE		8000-11		B	
NOKOMIS, FL 34275		8000-11		B	
P.O. BOX 1629		8000-11		B	
NOKOMIS, FL 34274		8000-11		B	
1070 TECHNOLOGY DRIVE		8000-11		B	
NOKOMIS, FL 34275		8000-11		B	
P.O. BOX 1629		8000-11		B	
NOKOMIS, FL 34274		8000-11		B	
1070 TECHNOLOGY DRIVE		8000-11		B	
NOKOMIS, FL 34275		8000-11		B	
P.O. BOX 1629		8000-11		B	
NOKOMIS, FL 34274		8000-11		B	
1070 TECHNOLOGY DRIVE		8000-11		B	
NOKOMIS, FL 34275		8000-11		B	
P.O. BOX 1629		8000-11		B	
NOKOMIS, FL 34274		8000-11		B	
1070 TECHNOLOGY DRIVE		8000-11		B	
NOKOMIS, FL 34275		8000-11		B	
P.O. BOX 1629		8000-11		B	
NOKOMIS, FL 34274		8000-11		B	
1070 TECHNOLOGY DRIVE		8000-11		B	
NOKOMIS, FL 34275		8000-11		B	
P.O. BOX 1629		8000-11		B	
NOKOMIS, FL 34274		8000-11		B	
1070 TECHNOLOGY DRIVE		8000-11		B	
NOKOMIS, FL 34275		8000-11		B	
P.O. BOX 1629		8000-11		B	
NOKOMIS, FL 34274		8000-11		B	
1070 TECHNOLOGY DRIVE		8000-11		B	
NOKOMIS, FL 34275		8000-11		B	
P.O. BOX 1629		8000-11		B	
NOKOMIS, FL 34274		8000-11		B	
1070 TECHNOLOGY DRIVE		8000-11		B	
NOKOMIS, FL 34275		8000-11		B	
P.O. BOX 1629		8000-11		B	
NOKOMIS, FL 34274		8000-11		B	
1070 TECHNOLOGY DRIVE		8000-11		B	
NOKOMIS, FL 34275		8000-11		B	
P.O. BOX 1629		8000-11		B	
NOKOMIS, FL 34274		8000-11		B	
1070 TECHNOLOGY DRIVE		8000-11		B	
NOKOMIS, FL 34275		8000-11		B	
P.O. BOX 1629		8000-11		B	
NOKOMIS, FL 34274		8000-11		B	
1070 TECHNOLOGY DRIVE		8000-11		B	
NOKOMIS, FL 34275		8000-11		B	
P.O. BOX 1629		8000-11		B	
NOKOMIS, FL 34274		8000-11		B	
1070 TECHNOLOGY DRIVE		8000-11		B	
NOKOMIS, FL 34275		8000-11		B	
P.O. BOX 1629		8000-11		B	
NOKOMIS, FL 34274		8000-11		B	
1070 TECHNOLOGY DRIVE		8000-11		B	
NOKOMIS, FL 34275		8000-11		B	
P.O. BOX 1629		8000-11		B	
NOKOMIS, FL 34274		8000-11		B	
1070 TECHNOLOGY DRIVE		8000-11		B	
NOKOMIS, FL 34275		8000-11		B	
P.O. BOX 1629		8000-11		B	
NOKOMIS, FL 34274		8000-11		B	
1070 TECHNOLOGY DRIVE		8000-11		B	
NOKOMIS, FL 34275		8000-11		B	
P.O. BOX 1629		8000-11		B	
NOKOMIS, FL 34274		8000-11		B	
1070 TECHNOLOGY DRIVE		8000-11		B	
NOKOMIS, FL 34275		8000-11		B	
P.O. BOX 1629		8000-11		B	
NOKOMIS, FL 34274		8000-11		B	
1070 TECHNOLOGY DRIVE		8000-11		B	
NOKOMIS, FL 34275		8000-11		B	
P.O. BOX 1629		8000-11		B	
NOKOMIS, FL 34274		8000-11		B	
1070 TECHNOLOGY DRIVE		8000-11		B	
NOKOMIS, FL 34275		8000-11		B	
P.O. BOX 1629		8000-11		B	
NOKOMIS, FL 34274		8000-11		B	
1070 TECHNOLOGY DRIVE		8000-11		B	
NOKOMIS, FL 34275		8000-11		B	
P.O. BOX 1629		8000-11		B	
NOKOMIS, FL 34274		8000-11		B	
1070 TECHNOLOGY DRIVE		8000-11		B	
NOKOMIS, FL 34275		8000-11		B	
P.O. BOX 1629		8000-11		B	
NOKOMIS, FL 34274		8000-11		B	
1070 TECHNOLOGY DRIVE		8000-11		B	
NOKOMIS, FL 34275		8000-11		B	
P.O. BOX 1629		8000-11		B	
NOKOMIS, FL 34274		8000-11		B	
1070 TECHNOLOGY DRIVE		8000-11		B	
NOKOMIS, FL 34275		8000-11		B	
P.O. BOX 1629		8000-11		B	
NOKOMIS, FL 34274		8000-11		B	
1070 TECHNOLOGY DRIVE		8000-11		B	
NOKOMIS, FL 34275		8000-11		B	
P.O. BOX 1629		8000-11		B	
NOKOMIS, FL 34274		8000-11		B	
1070 TECHNOLOGY DRIVE		8000-11		B	
NOKOMIS, FL 34275		8000-11		B	
P.O. BOX 1629		8000-11		B	
NOKOMIS, FL 34274		8000-11		B	
1070 TECHNOLOGY DRIVE		8000-11		B	
NOKOMIS, FL 34275		8000-11		B	
P.O. BOX 1629		8000-11		B	
NOKOMIS, FL 34274		8000-11		B	
1070 TECHNOLOGY DRIVE		8000-11		B	
NOKOMIS, FL 34275</					



**DETAIL A (CONCRETE)**  
 (SINGLE PANEL)  
 ANCHOR TYPES:  
 1 OR 2



**DETAIL C (CONCRETE)**  
 (2 OR MORE PANELS)  
 ANCHOR TYPES:  
 1 OR 2



**DETAIL D (WOOD)**  
 (2 OR MORE PANELS)  
 ANCHOR TYPES:  
 2 OR 3

**ANCHORAGE SPACING REQUIREMENTS:**

1. DETAILS A AND B ABOVE REPRESENT ANCHORING OF SINGLE X DOORS, OR INDIVIDUAL SIDE LITE O PANELS WITH FULL OR NARROW WIDTH JAMBS. DETAILS C AND D ABOVE REPRESENT ANCHORING OF ANY MIXTURE OF DOUBLE XX DOORS, SINGLE X DOORS, NARROW JAMB OR FULL JAMB SIDE LITE PANELS, FOR MULTIPLE-PANEL INSTALLATIONS OF TWO OR MORE PANELS. UNLESS OTHERWISE STATED, DIMENSIONS OF DETAILS A THROUGH D ARE MAXIMUMS.

2. ANCHOR TYPES: 1 - 1/4" ELCO TAPCON 2 - 1/4" ELCO SS4 CRETE-FLEX 3 - #12 STEEL SCREW (G5)

CONCRETE SUBSTRATE USE TYPE 1 AT 1 3/8" MIN. EMBEDMENT OR TYPE 2 AT 1 3/4" EMBEDMENT. 1 3/4" MIN. EDGE DISTANCE FOR BOTH.  
 WOOD SUBSTRATE - USE TYPE 2 OR TYPE 3 AT 1 3/8" MIN. EMBEDMENT.

3. SINGLE PANEL CONFIGURATIONS: (DETAIL A, CONCRETE SUBSTRATE; DETAIL B, WOOD SUBSTRATE)

HEAD AND SILL.....6" MAX. FROM FRAME CORNERS  
 JAMBS.....11" MAX. FROM FRAME CORNERS, 18,500" MAX. O.C. CONCRETE SUBSTRATE (DETAIL A) AND 10,571" MAX. O.C. WOOD SUBSTRATE (DETAIL B).

4. TWO OR MORE PANEL CONFIGURATIONS: (DETAIL C, CONCRETE SUBSTRATE)

HEAD AND SILL.....6" MAX. FROM FRAME CORNERS, AND AT 3" AND 6" MAX. ON EACH SIDE OF ASSEMBLY BEAM AND/OR ASTRAGAL LOCATIONS (CLUSTER OF 4).  
 JAMBS.....11" MAX. FROM FRAME CORNERS AND 18,500" MAX. O.C.

5. TWO OR MORE PANEL CONFIGURATIONS: (DETAIL D, WOOD SUBSTRATE)

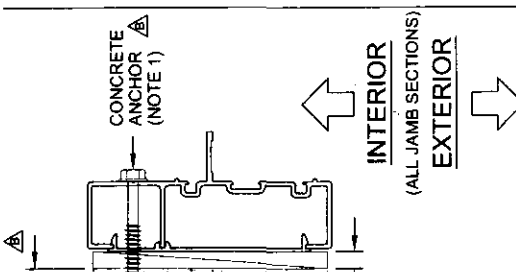
HEAD AND SILL.....6" MAX. FROM FRAME CORNERS, AND AT 3", 6", 9" AND 12" MAX. ON EACH SIDE OF ASSEMBLY BEAM AND/OR ASTRAGAL LOCATIONS (CLUSTER OF 8).  
 PLUS ENCIRCLED ANCHORS OUTSIDE CLUSTERS, REQUIRED ONLY ON PANEL WIDTHS OVER 27 3/4".  
 JAMBS.....11" MAX. FROM FRAME CORNERS AND 10,571" MAX. O.C.

PRODUCT REVIEWED  
 as complying with the Florida  
 Building Code  
 Amendment No. 07-0103 02  
 Adoption Date FEB. 24, 2010  
 Manuel Sola  
 Florida Professional Engineer

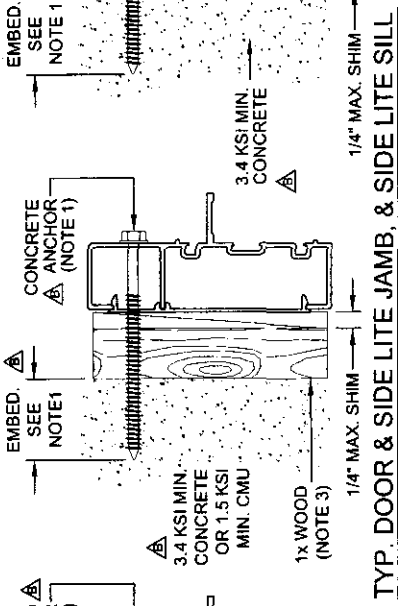
*[Signature]*  
 12/2/06

Lucas A. Turner, P.E.  
 PE #68201  
 Mechanical

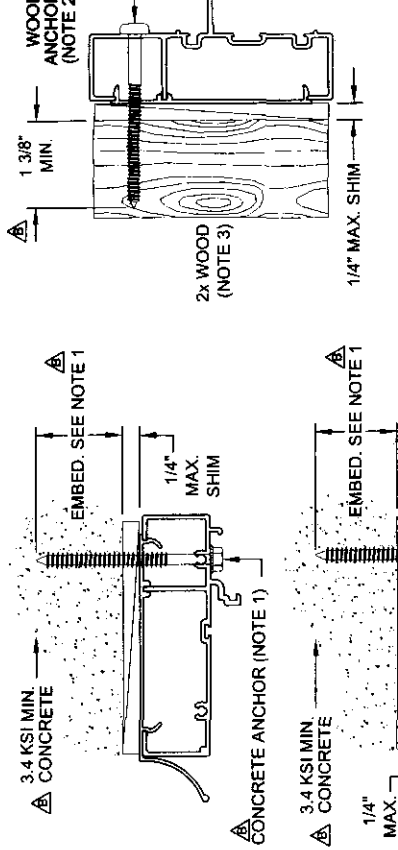
Revised By: Date: 8/25/05	Revised By: Date: 10/12/08	Revised By: Date: 12/23/04	Revised By: Date: 4/8/05	Revised By: Date: L.T.	Revised By: Date: 8/22/05	Revised By: Date: 10/12/08	Revised By: Date: 12/23/04	Revised By: Date: 4/8/05	Revised By: Date: L.T.
NO CHANGE THIS SHEET									
REPLACE NOTE PERTAINING TO ANCHORAGE OUTSIDE MD COUNTY.									
REVISE ANCHORAGE PER FB2004 AND REVISE NOTES 2, 3 & 5.									
 1070 TECHNOLOGY DRIVE NOKOMIS, FL 34275 P.O. BOX 1529 NOKOMIS, FL 34274 Visitby Better									
Description: <b>ANCHORAGE SPACING</b> Title: <b>ALUM. FRENCH DOOR &amp; SIDE LITES, IMPACT</b>									
Scale: 1/4"	Sheet: 9	of: 11	Drawing No: 8000-11	Rev: B	Scale: 1/4"	Sheet: 9	of: 11	Drawing No: 8000-11	Rev: B



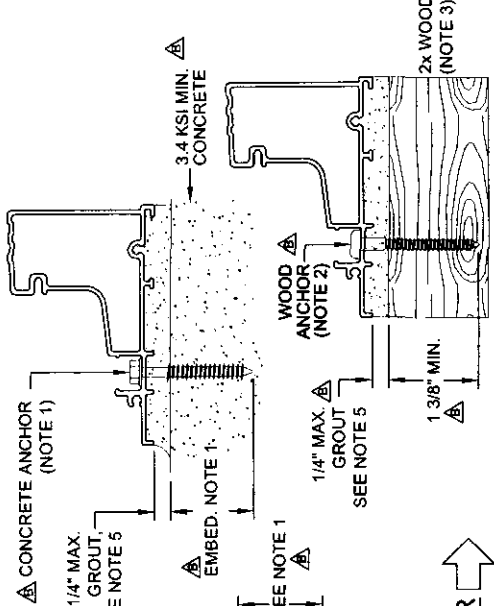
**INTERIOR**  
**EXTERIOR**  
(ALL JAMB SECTIONS)



**TYP. DOOR & SIDE LITE JAMB, & SIDE LITE SILL**



**TYPICAL SIDE LITE SILL (DIRECT TO CONCRETE)**



**TYP. DOOR SILL**

**TYP. DOOR & SIDE LITE HEAD**

PROSULITE MANUFACTURING  
1070 TECHNOLOGY DRIVE  
NOKOMIS, FL 34275  
P.O. BOX 1629  
NOKOMIS, FL 34274

07-0103-02  
FEB 24, 2010  
Mansueti

Zee Z  
12/12/10

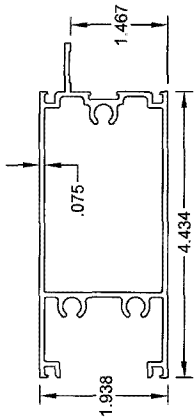
Lucas A. Turner, P.E.  
PE #56201  
Mechanical

- NOTES:**
- FOR CONCRETE APPLICATIONS IN MIAMI-DADE COUNTY, USE ONLY MIAMI-DADE COUNTY APPROVED ELCO 1/4" TAPCONS OR 1/4" SS4 CRETE-FLEX. MIN. DISTANCE FROM ANCHOR TO CONCRETE EDGE IS 1 3/4". MIN. EMBEDMENT: 1/4" TAPCON - 1 3/8", 1/4" SS4 CRETE-FLEX - 1 3/4".
  - FOR WOOD APPLICATIONS USE #12 STEEL SCREWS (G5) OR ELCO 1/4" SS4 CRETE-FLEX - 1 3/8" MIN. EMBEDMENT FOR EITHER.
  - WOOD BUCKS DEPICTED AS 1x ARE LESS THAN 1 1/2" THICK. 1x WOOD BUCKS ARE OPTIONAL IF UNIT IS INSTALLED DIRECTLY TO SOLID CONCRETE. WOOD BUCKS DEPICTED AS 2x ARE 1 1/2" THICK OR GREATER. INSTALLATION TO THE SUBSTRATE OF WOOD BUCKS TO BE ENGINEERED BY OTHERS OR AS APPROVED BY THE AUTHORITY HAVING JURISDICTION (AHJ).
  - FOR ATTACHMENT TO ALUM: THE MAT'L SHALL BE A MIN. STRENGTH OF 6063-T5 AND A MIN. OF 1/8" THICK. THE ALUM. STRUCTURAL MEMBER SHALL BE OF A SIZE TO PROVIDE FULL SUPPORT TO THE DOOR FRAME SIMILAR TO THAT SHOWN IN THE DETAILS ON THIS SHEET FOR 2x WOOD BUCKS. THE ANCHOR SHALL BE A #12 SMS ON FULL ENGAGEMENT INTO THE ALUM. IF THESE CRITERIA ARE MET, THE PRESSURES SHOWN ON SHEET 3 AND ANCHORAGE SPACING FOR CONCRETE SHOWN ON SHEET 9 MAY BE USED.
  - IF SILL IS TIGHT TO SUBSTRATE, GROUT OR OTHER MATERIAL IS NOT REQUIRED. IF USED, NON-SHRINK, NON-METALLIC GROUT, 3400 PSI MIN., (DONE BY OTHERS) MUST FULLY SUPPORT THE ENTIRE LENGTH OF THE SILL THAT IS NOT TIGHT TO THE SUBSTRATE, AND TRANSFER SHEAR LOAD TO SUBSTRATE.

Revised By:		Date:		Description:	
F.K.	A	3/25/05		UPDATE SHEET REFERENCE NOTE 6 AND ADD EXTERIOR/INTERIOR DIAGRAMS	
F.K.	B	10/12/05		UPDATE ANCHORAGE AND NOTES	
Drawn By:	Checked By:	Date:	Date:		
F.K.	L.T.	12/23/04	4/8/05		

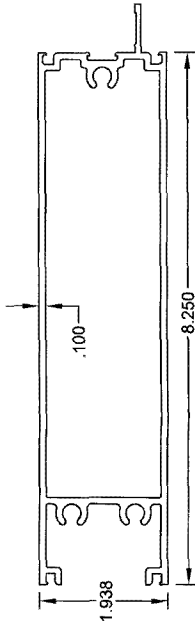
  

ANCHORAGE DETAILS			
Material	Spacing	Embedment	Notes
ALUM. FRENCH DOOR & SIDE LITES, IMPACT	1/4"	10" or 11"	8000-11



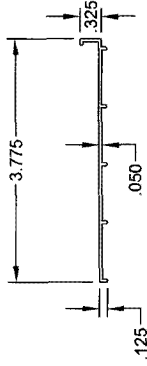
55 #8014 6063-T5

TOP RAIL, LAG BOLT DESIGN



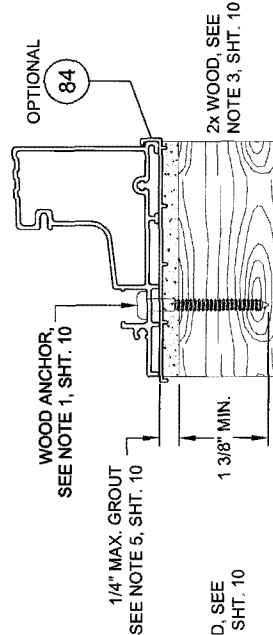
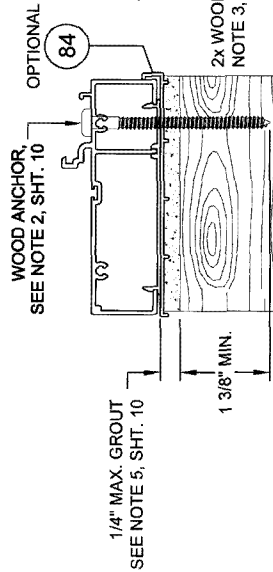
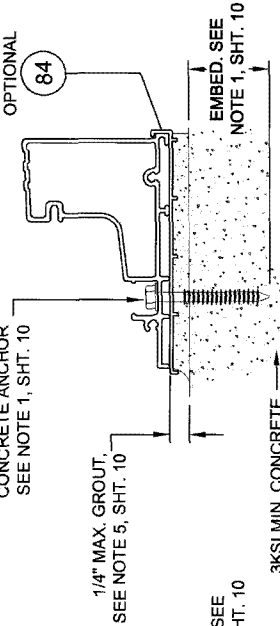
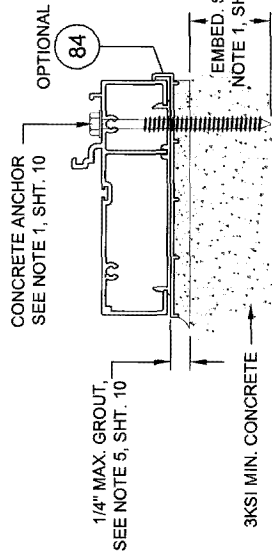
56 #8013A 6063-T6

BOTTOM RAIL, LAG BOLT DESIGN



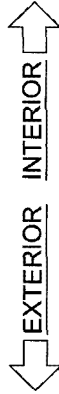
84 #8056 6063-T4

SUBSILL, OPTIONAL



OPTIONAL SIDE LITE SILL ANCHORAGE

OPTIONAL DOOR SILL ANCHORAGE



Revised By: Date:	Revisions:	Update Sheet Reference, Note 4 and Add Exterior/Interior Diagrams
F.K. 3/25/05	A	
Revised By: Date:	Revisions:	1070 TECHNOLOGY DRIVE
F.K. 10/12/06	B	NOKOMIS, FL 34275
Revised By: Date:	Revisions:	P.O. BOX 1659
F.K. 12/23/04	L.T.	NOKOMIS, FL 34274
Drawn By: Date:	Checked By: Date:	Visibly Better
F.K. 12/23/04	L.T. 4/8/05	

Description:		ANCHORAGE DETAILS	
Title:		ALUM. FRENCH DOOR & SIDE LITES, IMPACT	
Sheet:	1/4	Sheet:	11 of 11
Scale:	1/4"	Scale:	11"
Drawing No.:	8000-11	Drawing No.:	8000-11
Rev.:	B	Rev.:	B

PRODUCT REVISED  
 so complying with the Florida  
 Building Code  
 Approved by: 07-0103-02  
 FEB 24, 2010  
 Manuel Diaz  
 PROJECT ARCHITECT

Handwritten initials and date: 12/21/06

LUCAS A. TURNER P.E.  
 PE #58201  
 Mechanical