



BUILDING CODE COMPLIANCE OFFICE (BCCO)  
PRODUCT CONTROL DIVISION

MIAMI-DADE COUNTY, FLORIDA  
METRO-DADE FLAGLER BUILDING  
140 WEST FLAGLER STREET, SUITE 1603  
MIAMI, FLORIDA 33130-1563  
(305) 375-2901 FAX (305) 375-2908  
www.buildingcodeonline.com

**NOTICE OF ACCEPTANCE (NOA)**

**CGI Windows & Doors**  
10100 N.W. 25 St.  
Miami FL., 33172

**SCOPE:**

This NOA is being issued under the applicable rules and regulations governing the use of construction materials. The documentation submitted has been reviewed by Miami-Dade County Product Control Division and accepted by the Board of Rules and Appeals (BORA) to be used in Miami Dade County and other areas where allowed by the Authority Having Jurisdiction (AHJ).

This NOA shall not be valid after the expiration date stated below. The Miami-Dade County Product Control Division (In Miami Dade County) and/or the AHJ (in areas other than Miami Dade County) reserve the right to have this product or material tested for quality assurance purposes. If this product or material fails to perform in the accepted manner, the manufacturer will incur the expense of such testing and the AHJ may immediately revoke, modify, or suspend the use of such product or material within their jurisdiction. BORA reserves the right to revoke this acceptance, if it is determined by Miami-Dade County Product Control Division that this product or material fails to meet the requirements of the applicable building code.

This product is approved as described herein, and has been designed to comply with the Florida Building Code, including the High Velocity Hurricane Zone.

**DESCRIPTION: Series "560" Aluminum Sliding Glass Door w/wo reinforcements- Impact**

**APPROVAL DOCUMENT:** Drawing No. **W08-14**, titled "Series 560 Alum sliding Glass Door", sheets 1 through 13 of 13, prepared by Al-Farooq Corporation, dated 02/08/08 and last revised on May 18, 2008, signed and sealed by Dr. Humayoun Farooq, P.E., bearing the Miami-Dade County Product Control approval stamp with the Notice of Acceptance number and approval date by the Miami-Dade County Product Control Division.

**MISSILE IMPACT RATING: Large and Small Missile Impact**

Limitation:

1. Max Ext design pressure= +120 psf w/ Hi sill riser and w/o sill riser is not rated for water infiltration.
2. Full design pressures (see charts) are applicable, where water infiltration requirement is **not** needed.

**LABELING:** Each unit shall bear a permanent label with the manufacturer's name or logo, city, state and following statement: "Miami-Dade County Product Control Approved", unless otherwise noted herein.

**RENEWAL** of this NOA shall be considered after a renewal application has been filed and there has been no change in the applicable building code negatively affecting the performance of this product.

**TERMINATION** of this NOA will occur after the expiration date or if there has been a revision or change in the materials, use, and/or manufacture of the product or process. Misuse of this NOA as an endorsement of any product, for sales, advertising or any other purposes shall automatically terminate this NOA. Failure to comply with any section of this NOA shall be cause for termination and removal of NOA.

**ADVERTISEMENT:** The NOA number preceded by the words Miami-Dade County, Florida, and followed by the expiration date may be displayed in advertising literature. If any portion of the NOA is displayed, then it shall be done in its entirety.

**INSPECTION:** A copy of this entire NOA shall be provided to the user by the manufacturer or its distributors and shall be available for inspection at the job site at the request of the Building Official.

This NOA consists of this page 1, evidence sheet E-1, as well as, approval document mentioned above.

The submitted documentation was reviewed by **Ishaq I. Chanda, P. E.**



NOA No. 08-0304.05  
Expiration Date: June 12, 2012  
Approval Date: June 12, 2008  
Page 1

5/23/08

NOTICE OF ACCEPTANCE: EVIDENCE SUBMITTED

**A. DRAWINGS**

1. Manufacturer's die drawings and sections.
2. Drawing No. **W08-14**, titled "Series 560 Alum sliding Glass Door", sheets 1 through 13 of 13, prepared by Al-Farooq Corporation, dated 02/08/08 and last revised on May 18, 2008, signed and sealed by Dr. Humayoun Farooq, P.E.

**B. TESTS**

1. Test report on 1) Air Infiltration Test, per PA 202-94
  - 2) Uniform Static Air Pressure Test, Loading per PA 202-94
  - 3) Water Resistance Test, per PA 202-94.
  - 4) Forced Entry Test, per SFBC 3603.2 (b) and PA 202-94
  - 5) Large Missile Impact Test per SFBC and PA201-94
  - 6) Cyclic Wind Pressure Loading per SFBC and PA203-94

Along with manufacturer's parts and section drawing marked-up drawings of aluminum SGD, by Hurricane Engineering Testing, Inc., Test Report No. **HETI-07-4405, 07-4416, 07-4418, 07-4424, 07-4425, 07-4425 and 07-4427**, dated 12/27/07 thru 01/31/08, signed and sealed by Candido Font, P.E.

(Note: Test report No(s) **HETI-07-4405** and **07-4416** have been revised and reissued on April 08, 2008 by Hurricane Engineering Testing, Inc, signed and sealed by Candido Font, P.E.)

**C. CALCULATIONS**

1. Structural analysis & anchor verification dated 02-28-08 and last revised on 05/19/08, prepared by Al-Farooq Corp., complying w/ FBC 2004 prepared, signed and sealed by Dr. Humayoun Farooq, P.E.
2. Glazing complies with ASTM E-1300-02

**D. QUALITY ASSURANCE**

1. Miami Dade Building Code Compliance Office (BCCO).

**E. MATERIAL CERTIFICATIONS**

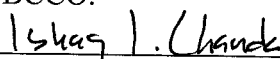
1. Notice of Acceptance No. **07-1116.04** issued to E.I. DuPont DeNemours & CO., Inc. for "**DuPont Sentry Glass Plus**", expiring on January 14, 2012.
2. Notice of Acceptance No. **03-0415.13** issued to Solutia, Inc. for "**Vanceva™ Composite interlayer**", expiring on December 11, 2008.

**F. STATEMENTS**

1. Statement letter of conformance and no financial interest, dated 01-30-08, signed by Dr. Humayoun Farooq, P.E.
2. Statement letter of lab compliance, part of the above test reports.

**G. OTHER**

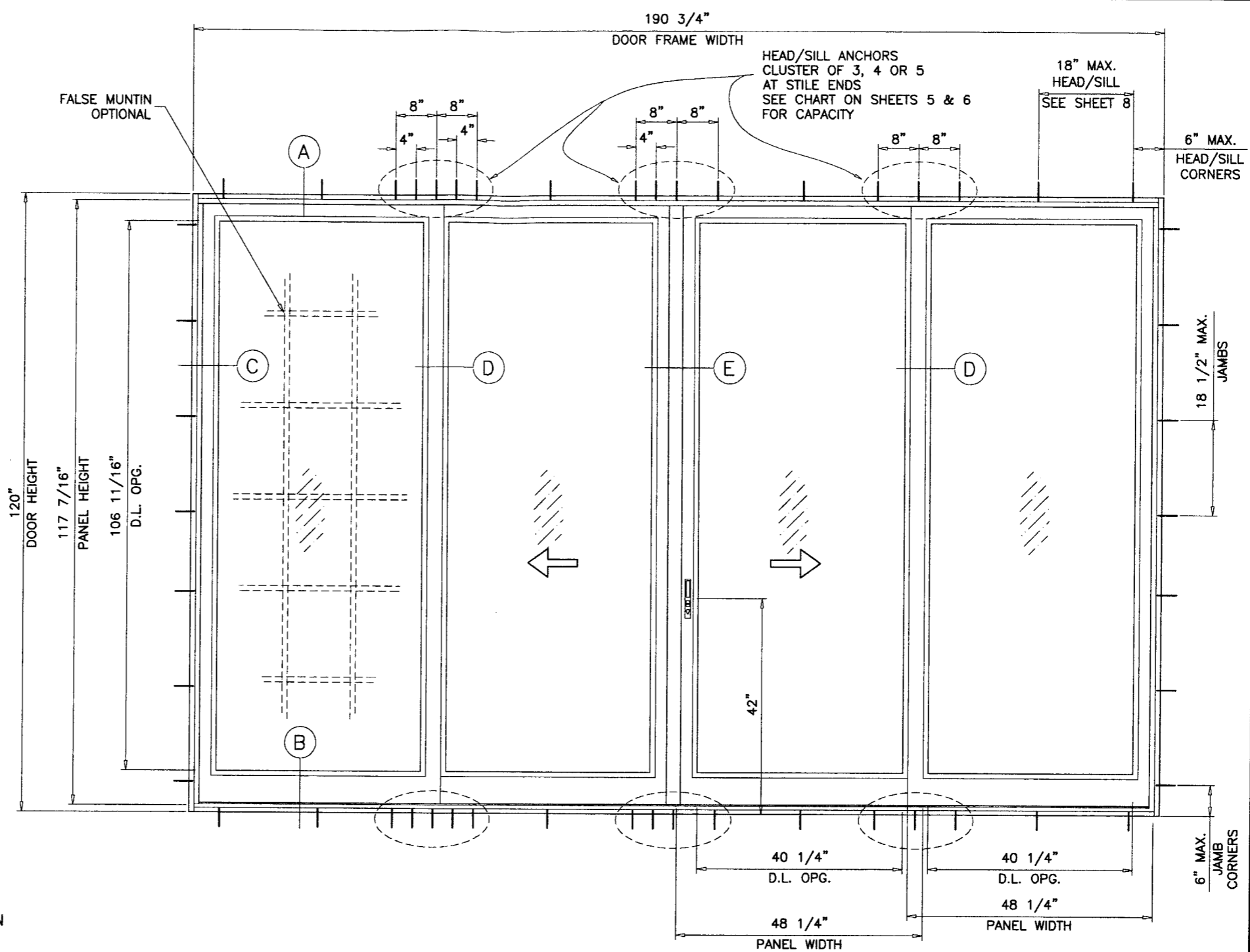
1. Test proposal # 07-3001-R dated 10-23-07, approved by BCCO.

  
Ishaq I. Chanda, P.E.  
Product Control Examiner  
NOA No. 08-0304.05  
Expiration Date: June 12, 2012  
Approval Date: June 12, 2008

no	date	description
A	04.18.08	REV. PER BCCO COMMENTS
B	05.16.08	REV. PER BCCO COMMENTS

date: 02-08-08  
 scale: 1/2" = 1'-0"  
 dr. by: HAMID  
 chk. by:

drawing no.  
**W08-14**  
 sheet 1 of 13



**D.L. OPENING**  
 D.L.O HEIGHT = DOOR HEIGHT - 13 5/16"  
 D.L.O. WIDTH = PANEL WIDTH - 8"

DOORS GLAZED WITH LAMINATED GLASS RATED FOR LARGE MISSILE IMPACT AND REQUIRE NO SHUTTERS.

**SERIES 560 ALUM SLIDING GLASS DOOR**

DESIGN LOAD RATING FOR DOORS TO BE AS PER CHARTS SHOWN ON SHEET 3.  
 APPLICABLE EGRESS REQUIREMENTS PER FBC TO BE REVIEWED BY BUILDING OFFICIAL.

THIS PRODUCT HAS BEEN DESIGNED AND TESTED TO COMPLY WITH THE REQUIREMENTS OF THE FLORIDA BUILDING CODE 2004/2007 EDITION INCLUDING HIGH VELOCITY HURRICANE ZONE (HVHZ).

1BY OR 2BY WOOD BUCKS BY OTHERS, MUST BE ANCHORED PROPERLY TO TRANSFER LOADS TO THE STRUCTURE.

ANCHORS SHALL BE AS LISTED, SPACED AS SHOWN ON DETAILS, ANCHORS EMBEDMENT TO BASE MATERIAL SHALL BE BEYOND WALL DRESSING OR STUCCO.

ANCHORING OR LOADING CONDITIONS NOT SHOWN IN THESE DETAILS ARE NOT PART OF THIS APPROVAL.

A LOAD DURATION INCREASE IN ALLOWABLE STRESS IS USED IN DESIGN OF ANCHORS INTO WOOD ONLY.

MATERIALS INCLUDING BUT NOT LIMITED TO STEEL/METAL SCREWS, THAT COME INTO CONTACT WITH OTHER DISSIMILAR MATERIALS SHALL MEET THE REQUIREMENTS OF 2004 FLORIDA BLDG. CODE SECTION 2003.8.4.

**INSTRUCTIONS:**

USE CHARTS AS FOLLOWS.

- STEP 1** DETERMINE DESIGN WIND LOAD REQUIREMENT BASED ON WIND VELOCITY, BLDG. HEIGHT, WIND ZONE USING APPLICABLE ASCE 7 STANDARD.
- STEP 2** DETERMINE DOOR CAPACITY FROM TABLES ON SHEET 3 FOR THE GLASS TYPE AND REINFORCING TO USE.
- STEP 3** USING CHARTS ON SHEET 5 & 6 SELECT ANCHOR OPTION WITH DESIGN RATING MORE THAN DESIGN LOAD SPECIFIED IN STEP 1 ABOVE.
- STEP 4** FOR SIDE BY SIDE DOORS WITH VERTICAL MULLION (IF REQUIRED) SELECT 2X6 OR 2X8 TUBE FROM CHART ON SHEET 13 WITH LOAD RATING HIGHER THAN REQUIRED. SELECT ANCHORS AS PER STEP 3.
- STEP 5** THE LOWEST VALUE RESULTING FROM STEPS 2, 3 AND 4 SHALL APPLY TO ENTIRE SYSTEM.

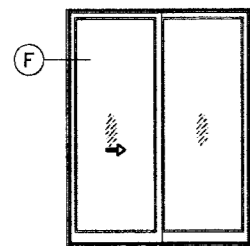
**TYPICAL ELEVATION**  
 SAMPLE TESTED UNIT

Approved as complying with the Florida Building Code  
 Date: June 12, 2008  
 NOA# 08-030405  
 Miami Dade Product Control  
 Division  
 By: Chag I. Chande

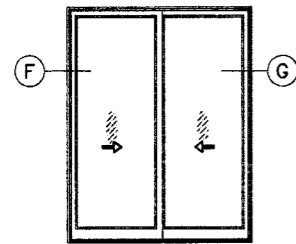
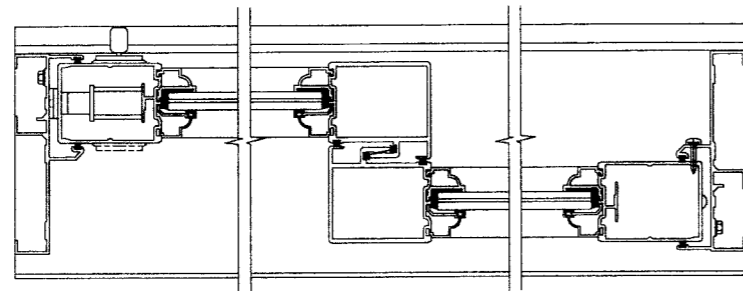
**LAMINATED GLASS AND LAMINATED INSULATING GLASS LARGE MISSILE IMPACT**

Engr: DR. HUMAYOON FAROOQ  
 STRUCTURES  
 FLA. PE # 16557  
 C.A.N. 3538

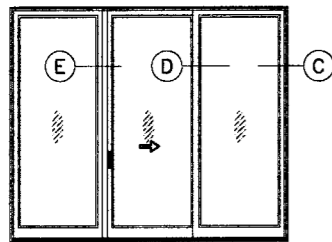
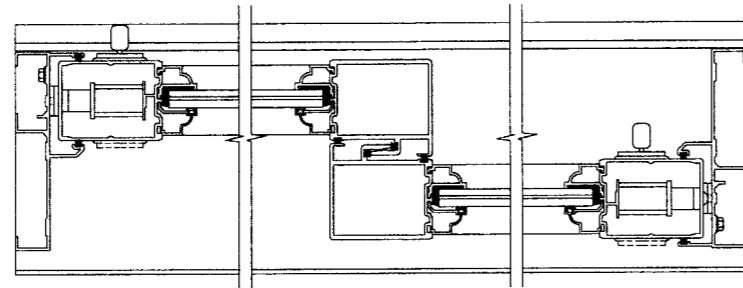
MAY 19 2008



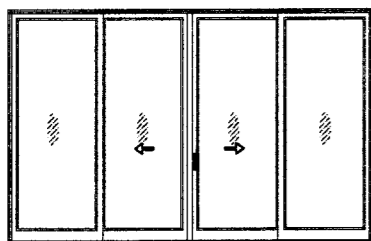
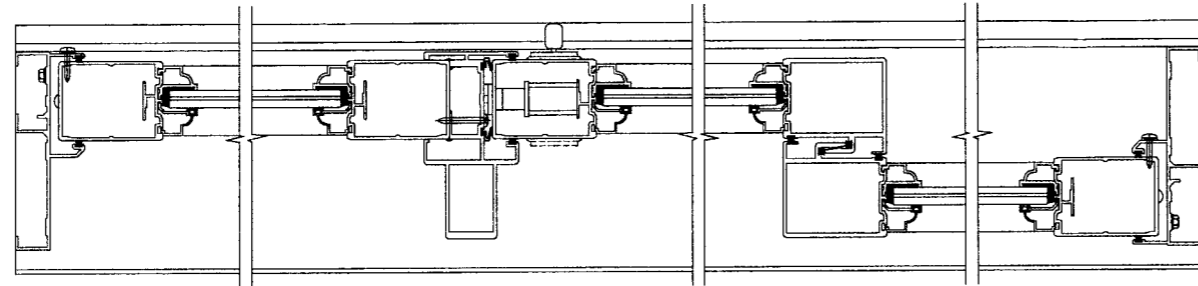
XO (SHOWN)  
OX



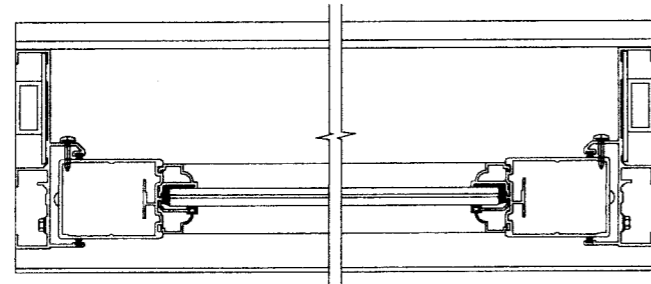
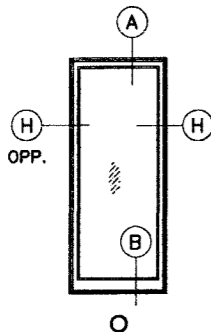
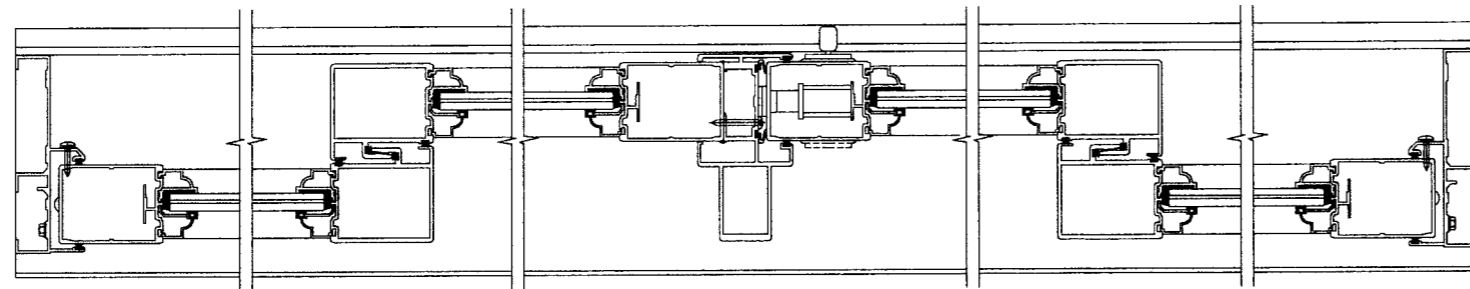
XX



OXO (SHOWN)  
XXX (SIMILAR)



OXXO  
XXXX (SIMILAR)



APPROVED CONFIGURATIONS

Over-all Door Frame Width based on Panel Width

Panel Width	2 Panel Door Frame Width	3 Panel Door Frame Width	4 Panel Door Frame Width	1 Fixed Panel Frame Width
24 1/4"	48"	73 1/2"	94 3/4"	26 3/4"
30 1/4"	60"	91 1/2"	118 3/4"	32 3/4"
36 1/4"	72"	109 1/2"	142 3/4"	38 3/4"
42 1/4"	84"	127 1/2"	166 3/4"	44 3/4"
48 1/4"	96"	145 1/2"	190 3/4"	50 3/4"
54 1/4"	108"	163 1/2"	214 3/4"	56 3/4"
60 1/4"	120"	181 1/2"	238 3/4"	62 3/4"

MAXIMUM DOOR HEIGHT = 120"

Formula to convert Door Width to Panel Width

For 2 Panel Doors: Door Width/2 + 1/4" = Panel Width  
 For 3 Panel Doors: Door Width/3 - 1/4" = Panel Width  
 For 4 Panel Doors: Door Width/4 + 9/16" = Panel Width  
 For 1 Panel Doors: Door Width - 2 1/2" = Panel Width

Formula to convert Panel Width to Door Width

For 2 Panel Doors: Panel Width x 2 - 1/2" = Door Width  
 For 3 Panel Doors: Panel Width x 3 + 3/4" = Door Width  
 For 4 Panel Doors: Panel Width x 4 - 2 1/4" = Door Width  
 For 1 Panel Doors: Panel Width + 2 1/2" = Door Width

Panel Height Formula

Door Height - 2 9/16" = Panel Height

D.L. OPENING

D.L.O HEIGHT = DOOR HEIGHT - 13 5/16"  
 D.L.O. WIDTH = PANEL WIDTH - 8"

Approved as complying with the  
 Florida Building Code  
 Date June 12, 2008  
 NOA# 08-0304-05  
 Miami Dade Product Control  
 Division  
 By Shag I. Chand

Engr. DR. HUMAYOUN FAROOQ  
 STRUCTURES  
 FLA. PE # 16557  
 C.A.N. 3538

MAY 19 2008

**af c**  
**AL-FAROOQ CORPORATION**  
 ENGINEERS & PRODUCT DEVELOPMENT  
 1235 S.W. 87 AVE  
 MIAMI, FLORIDA 33174  
 TEL. (305) 264-8100 FAX. (305) 262-6978  
 COMP-ANL\W08-14CGI

SERIES-560 ALUM SLIDING GLASS DOOR (L.M.I.)  
**CGI WINDOWS & DOORS**  
 10100 N.W. 25TH STREET  
 MIAMI, FL. 33172  
 TEL. (305) 593-6590 FAX. (305) 593-6592

no	date	description
A	04.18.08	REV. PER BCCO COMMENTS
B	05.16.08	REV. PER BCCO COMMENTS

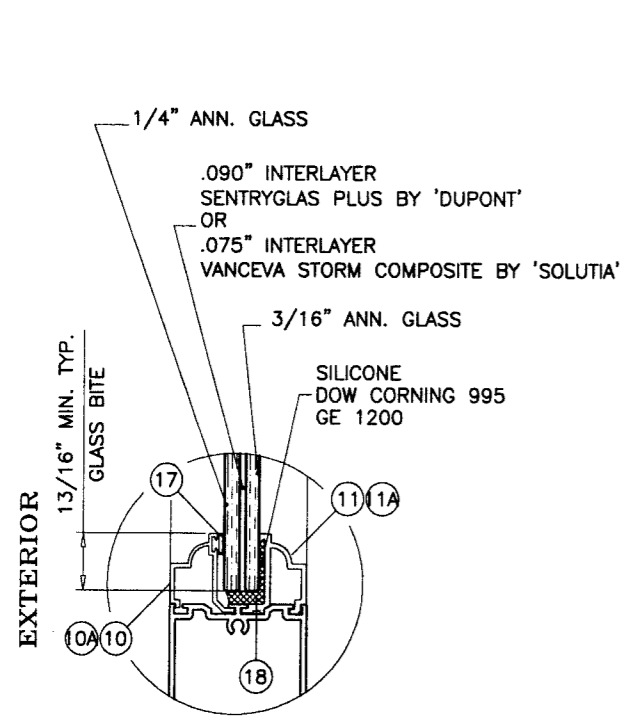
date: 02-08-08  
 scale: -  
 dr. by: HAMID  
 chk. by:

drawing no.  
**W08-14**  
 sheet 2 of 13

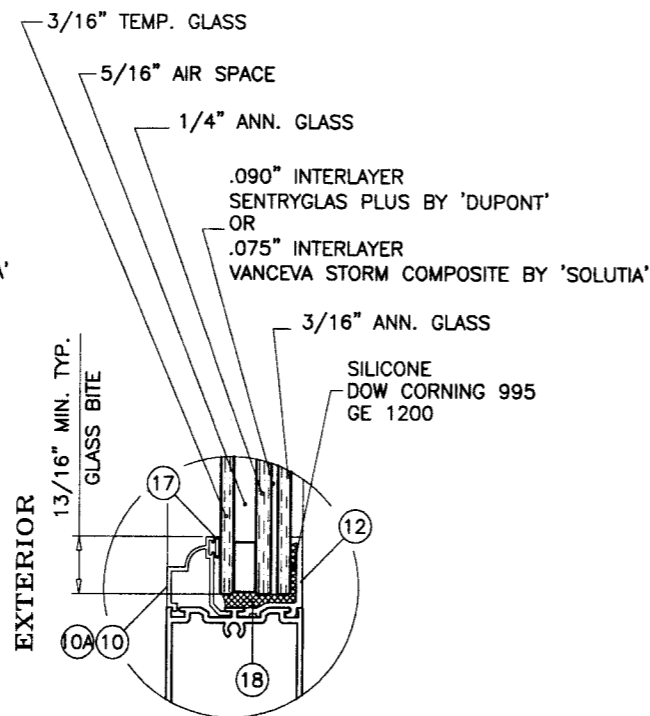
DESIGN LOAD CAPACITY - PSF (GLASS)							
PANEL WIDTH INCHES	DOOR HEIGHT INCHES	GLASS TYPES '1' & '1A'		GLASS TYPES '2' & '2A'			
		W/O REINF.		W/O REINF.		WITH REINF.	
		EXT.(+)	INT.(-)	EXT.(+)	INT.(-)	EXT.(+)	INT.(-)
24-1/4	80	120.0	170.0	120.0	170.0	120.0	170.0
30-1/4		120.0	165.0	120.0	165.0	120.0	170.0
33-1/4		120.0	153.7	120.0	153.7	120.0	170.0
36-1/4		120.0	144.4	120.0	144.4	120.0	170.0
39-1/4		120.0	134.3	120.0	136.6	120.0	170.0
42-1/4		120.0	120.3	120.0	130.2	120.0	170.0
44-1/4		114.1	114.1	120.0	126.4	120.0	170.0
46-1/4		108.8	108.8	120.0	123.1	120.0	170.0
48-1/4		104.5	104.5	120.0	120.1	120.0	170.0
50-1/4		100.8	100.8	117.4	117.4	120.0	170.0
52-1/4		95.6	95.6	115.0	115.0	120.0	170.0
54-1/4		93.8	93.8	112.9	112.9	120.0	170.0
56-1/4		92.0	92.0	111.0	111.0	120.0	170.0
58-1/4		80.0	80.0	80.0	80.0	120.0	140.0
60-1/4		80.0	80.0	80.0	80.0	120.0	140.0
24-1/4		84	120.0	170.0	120.0	170.0	120.0
30-1/4	120.0		155.4	120.0	155.4	120.0	170.0
33-1/4	120.0		144.5	120.0	144.5	120.0	170.0
36-1/4	120.0		135.6	120.0	135.6	120.0	170.0
39-1/4	120.0		128.2	120.0	128.2	120.0	170.0
42-1/4	115.3		115.3	120.0	121.9	120.0	170.0
44-1/4	108.5		108.5	120.0	118.3	120.0	170.0
46-1/4	103.3		103.3	120.0	115.0	120.0	170.0
48-1/4	99.0		99.0	112.1	112.1	120.0	170.0
50-1/4	92.5		92.5	109.5	109.5	120.0	170.0
52-1/4	90.7		90.7	107.1	107.1	120.0	170.0
54-1/4	88.9		88.9	104.9	104.9	120.0	170.0
56-1/4	80.0		80.0	80.0	80.0	120.0	140.0
58-1/4	80.0		80.0	80.0	80.0	120.0	140.0
60-1/4	80.0		80.0	80.0	80.0	120.0	140.0
24-1/4	90		120.0	170.0	120.0	170.0	120.0
30-1/4		120.0	143.0	120.0	143.0	120.0	170.0
33-1/4		120.0	132.7	120.0	132.7	120.0	170.0
36-1/4		120.0	124.3	120.0	124.3	120.0	170.0
39-1/4		117.2	117.2	117.2	117.2	120.0	170.0
42-1/4		109.0	109.0	111.3	111.3	120.0	170.0
44-1/4		101.7	101.7	107.8	107.8	120.0	170.0
46-1/4		90.2	90.2	104.7	104.7	120.0	170.0
48-1/4		88.1	88.1	101.9	101.9	120.0	170.0
50-1/4		86.2	86.2	99.3	99.3	120.0	170.0
52-1/4		80.0	80.0	80.0	80.0	120.0	140.0
54-1/4		80.0	80.0	80.0	80.0	120.0	140.0
56-1/4		80.0	80.0	80.0	80.0	120.0	140.0
58-1/4		80.0	80.0	80.0	80.0	120.0	140.0
60-1/4		80.0	80.0	80.0	80.0	120.0	140.0
24-1/4		96	120.0	159.2	120.0	159.2	120.0
30-1/4	120.0		132.4	120.0	132.4	120.0	170.0
33-1/4	120.0		122.7	120.0	122.7	120.0	170.0
36-1/4	114.7		114.7	114.7	114.7	120.0	170.0
39-1/4	108.0		108.0	108.0	108.0	120.0	170.0
42-1/4	102.4		102.4	102.4	102.4	120.0	170.0
44-1/4	91.1		91.1	99.1	99.1	120.0	170.0
46-1/4	86.9		86.9	96.1	96.1	120.0	170.0
48-1/4	83.5		83.5	93.4	93.4	120.0	167.0
50-1/4	80.0		80.0	80.0	80.0	120.0	140.0
52-1/4	80.0		80.0	80.0	80.0	120.0	140.0
54-1/4	80.0		80.0	80.0	80.0	120.0	140.0
56-1/4	78.3		78.3	80.0	80.0	120.0	140.0
58-1/4	76.1		76.1	80.0	80.0	120.0	140.0
60-1/4	74.1		74.1	80.0	80.0	120.0	140.0

DESIGN LOAD CAPACITY - PSF (GLASS)							
PANEL WIDTH INCHES	DOOR HEIGHT INCHES	GLASS TYPES '1' & '1A'		GLASS TYPES '2' & '2A'			
		W/O REINF.		W/O REINF.		WITH REINF.	
		EXT.(+)	INT.(-)	EXT.(+)	INT.(-)	EXT.(+)	INT.(-)
24-1/4	99	80.0	80.0	80.0	80.0	120.0	140.0
30-1/4		80.0	80.0	80.0	80.0	120.0	140.0
33-1/4		80.0	80.0	80.0	80.0	120.0	140.0
36-1/4		80.0	80.0	80.0	80.0	120.0	140.0
39-1/4		80.0	80.0	80.0	80.0	120.0	140.0
42-1/4		80.0	80.0	80.0	80.0	120.0	140.0
44-1/4		80.0	80.0	80.0	80.0	120.0	140.0
46-1/4		80.0	80.0	80.0	80.0	120.0	140.0
48-1/4		80.0	80.0	80.0	80.0	120.0	140.0
50-1/4		80.0	80.0	80.0	80.0	120.0	140.0
52-1/4		80.0	80.0	80.0	80.0	120.0	140.0
54-1/4		78.1	78.1	80.0	80.0	120.0	140.0
56-1/4		75.5	75.5	80.0	80.0	120.0	140.0
58-1/4		73.3	73.3	79.6	79.6	120.0	140.0
60-1/4		-	-	-	-	90.0	90.0
24-1/4		102	80.0	80.0	80.0	80.0	120.0
30-1/4	80.0		80.0	80.0	80.0	120.0	140.0
33-1/4	80.0		80.0	80.0	80.0	120.0	140.0
36-1/4	80.0		80.0	80.0	80.0	120.0	140.0
39-1/4	80.0		80.0	80.0	80.0	120.0	140.0
42-1/4	80.0		80.0	80.0	80.0	120.0	140.0
44-1/4	80.0		80.0	80.0	80.0	120.0	140.0
46-1/4	80.0		80.0	80.0	80.0	120.0	140.0
48-1/4	80.0		80.0	80.0	80.0	120.0	140.0
50-1/4	80.0		80.0	80.0	80.0	120.0	140.0
52-1/4	78.4		78.4	80.0	80.0	120.0	140.0
54-1/4	75.4		75.4	79.7	79.7	120.0	140.0
56-1/4	72.9		72.9	77.9	77.9	120.0	140.0
58-1/4	-		-	-	-	90.0	90.0
60-1/4	-		-	-	-	90.0	90.0
24-1/4	105		80.0	80.0	80.0	80.0	120.0
30-1/4		80.0	80.0	80.0	80.0	120.0	140.0
33-1/4		80.0	80.0	80.0	80.0	120.0	140.0
36-1/4		80.0	80.0	80.0	80.0	120.0	140.0
39-1/4		80.0	80.0	80.0	80.0	120.0	140.0
42-1/4		80.0	80.0	80.0	80.0	120.0	140.0
44-1/4		80.0	80.0	80.0	80.0	120.0	140.0
46-1/4		80.0	80.0	80.0	80.0	120.0	140.0
48-1/4		80.0	80.0	80.0	80.0	120.0	140.0
50-1/4		79.3	79.3	80.0	80.0	120.0	140.0
52-1/4		75.9	75.9	78.6	78.6	120.0	140.0
54-1/4		73.0	73.0	76.6	76.6	120.0	140.0
56-1/4		-	-	-	-	90.0	90.0
58-1/4		-	-	-	-	90.0	90.0
60-1/4		-	-	-	-	90.0	90.0
24-1/4		108	80.0	80.0	80.0	80.0	120.0
30-1/4	80.0		80.0	80.0	80.0	120.0	140.0
33-1/4	80.0		80.0	80.0	80.0	120.0	140.0
36-1/4	80.0		80.0	80.0	80.0	120.0	140.0
39-1/4	80.0		80.0	80.0	80.0	120.0	140.0
42-1/4	80.0		80.0	80.0	80.0	120.0	140.0
44-1/4	80.0		80.0	80.0	80.0	120.0	140.0
46-1/4	80.0		80.0	80.0	80.0	120.0	140.0
48-1/4	80.0		80.0	80.0	80.0	120.0	140.0
50-1/4	77.0		77.0	77.8	77.8	120.0	140.0
52-1/4	73.6		73.6	75.7	75.7	120.0	140.0
54-1/4	-		-	-	-	90.0	90.0
56-1/4	-		-	-	-	90.0	90.0
58-1/4	-		-	-	-	90.0	90.0
60-1/4	-		-	-	-	90.0	90.0

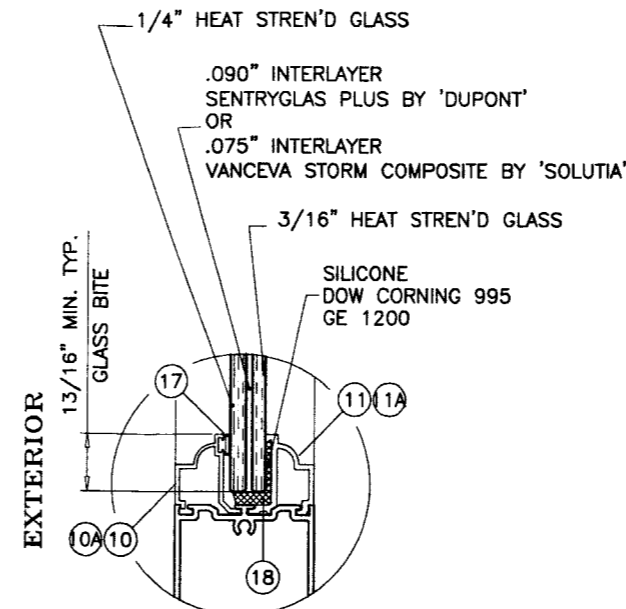
DESIGN LOAD CAPACITY - PSF (GLASS)							
PANEL WIDTH INCHES	DOOR HEIGHT INCHES	GLASS TYPES '1' & '1A'		GLASS TYPES '2' & '2A'			
		W/O REINF.		W/O REINF.		WITH REINF.	
		EXT.(+)	INT.(-)	EXT.(+)	INT.(-)	EXT.(+)	INT.(-)
24-1/4	111	80.0	80.0	80.0	80.0	120.0	140.0
30-1/4		80.0	80.0	80.0	80.0	120.0	140.0
33-1/4		80.0	80.0	80.0	80.0	120.0	140.0
36-1/4		80.0	80.0	80.0	80.0	120.0	140.0
39-1/4		80.0	80.0	80.0	80.0	120.0	140.0
42-1/4		80.0	80.0	80.0	80.0	120.0	140.0
44-1/4		80.0	80.0	80.0	80.0	120.0	140.0
46-1/4		79.7	79.7	79.7	79.7	120.0	140.0
48-1/4		77.3	77.3	77.3	77.3	120.0	140.0
50-1/4		74.8	74.8	75.0	75.0	120.0	140.0
52-1/4		-	-	-	-	90.0	90.0
54-1/4		-	-	-	-	90.0	90.0
56-1/4		-	-	-	-	90.0	90.0
58-1/4		-	-	-	-	90.0	90.0
60-1/4		-	-	-	-	90.0	90.0
24-1/4		114	80.0	80.0	80.0	80.0	120.0
30-1/4	80.0		80.0	80.0	80.0	120.0	140.0
33-1/4	80.0		80.0	80.0	80.0	120.0	140.0
36-1/4	80.0		80.0	80.0	80.0	120.0	140.0
39-1/4	80.0		80.0	80.0	80.0	120.0	140.0
42-1/4	80.0		80.0	80.0	80.0	120.0	140.0
44-1/4	79.7		79.7	80.0	80.0	120.0	140.0
46-1/4	77.0		77.0	77.0	77.0	120.0	140.0
48-1/4	74.7		74.7	74.7	74.7	120.0	140.0
50-1/4	72.5		72.5	72.5	72.5	120.0	140.0
52-1/4	-		-	-	-	90.0	90.0
54-1/4	-		-	-	-	90.0	90.0
56-1/4	-		-	-	-	90.0	90.0
58-1/4	-		-	-	-	90.0	90.0
60-1/4	-		-	-	-	90.0	90.0
24-1/4	117		80.0	80.0	80.0	80.0	120.0
30-1/4		80.0	80.0	80.0	80.0	120.0	140.0
33-1/4		80.0	80.0	80.0	80.0	120.0	140.0
36-1/4		80.0	80.0	80.0	80.0	120.0	140.0
39-1/4		80.0	80.0	80.0	80.0	120.0	140.0
42-1/4		79.9	79.9	80.0	80.0	120.0	140.0
44-1/4		77.1	77.1	79.9	79.9	120.0	140.0
46-1/4		74.6	74.6	74.6	74.6	120.0	140.0
48-1/4		72.3	72.3	72.3	72.3	120.0	140.0
50-1/4		-	-	-	-	90.0	90.0
52-1/4		-	-	-	-	90.0	90.0
54-1/4		-	-	-	-	90.0	90.0
56-1/4		-	-	-	-	90.0	90.0



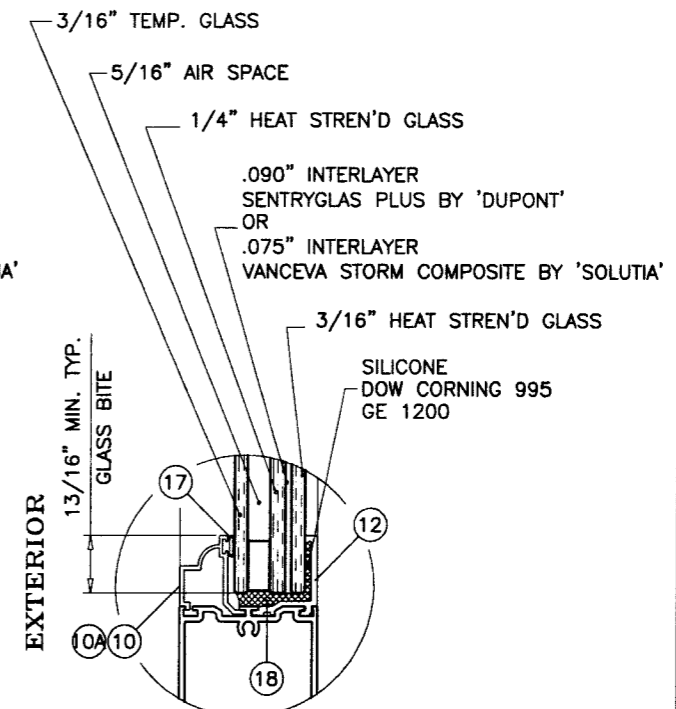
GLASS TYPE '1'



GLASS TYPE '1A'



GLASS TYPE '2'

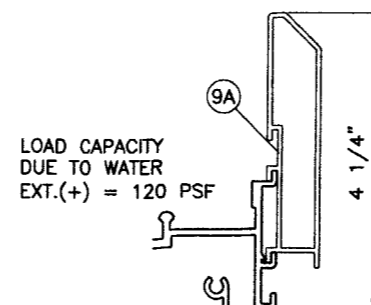
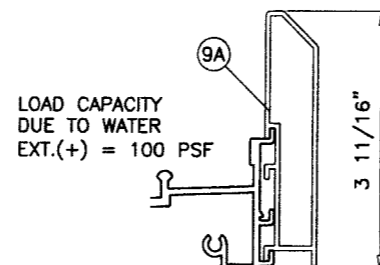
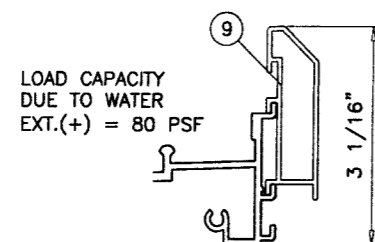
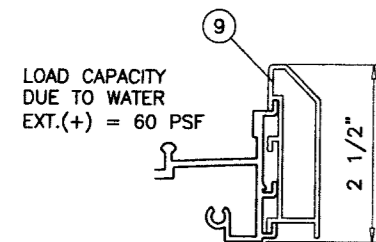


GLASS TYPE '2A'

GLAZING OPTIONS

NOTE:  
 3/16" AND 1/4" PIECES OF GLASS ON THE  
 1/2" LAMINATED UNIT ARE INTERCHANGEABLE  
 (EX: 3/16" + 1/4" OR 1/4" + 3/16")

Approved as complying with the  
 Florida Building Code  
 Date June 12, 2008  
 NOA# 08-0304-05  
 Miami Dade Product Control  
 Division  
*(Signature)*



LOAD CAPACITIES SHOWN IN CHART ON SHEET 3 ARE FOR DOORS USING 4-1/4" SILL HEIGHTS  
 FOR DOORS USING LOWER SILL HEIGHTS LIMIT EXTERIOR(+) LOADS AS SHOWN ABOVE.

Engr: DR. HUMAYOUN FAROOQ  
 STRUCTURES  
 FLA. PE # 16557  
 C.A.N. 3538

MAY 19 2008

**af c**  
**AL-FAROOQ CORPORATION**  
 ENGINEERS & PRODUCT DEVELOPMENT  
 1235 S.W. 87 AVE  
 MIAMI, FLORIDA 33174  
 TEL. (305) 264-8100 FAX. (305) 262-6978  
 COMP-ANL \ W08-14CGI

SERIES-560 ALUM SLIDING GLASS DOOR (L.M.I.)  
**CGI WINDOWS & DOORS**  
 10100 N.W. 25TH STREET  
 MIAMI, FL. 33172  
 TEL. (305) 593-6590 FAX. (305) 593-6592

no	date	description
A	04.18.08	REV. PER BCCO COMMENTS
B	05.16.08	NO CHANGE THIS SHEET

date: 02-08-08  
 scale: -  
 dr. by: HAMID  
 chk. by:

drawing no.  
**W08-14**  
 sheet 4 of 13

DESIGN LOAD CAPACITY - PSF (ANCHORS)																					
PANEL WIDTH INCHES	DOOR HEIGHT INCHES	ANCHORS TYPE 'A'					ANCHORS TYPE 'B'					ANCHORS TYPE 'C'									
		1/2" SHIM SPACE					1/4" SHIM SPACE					3/8" SHIM SPACE					1/2" SHIM SPACE				
		CLUSTER OF					CLUSTER OF					CLUSTER OF					CLUSTER OF				
		3	4	5	3	4	5	3	4	5	3	4	5	3	4	5					
24-1/4	80	170.0	170.0	170.0	170.0	170.0	170.0	170.0	170.0	170.0	170.0	170.0	170.0	170.0	170.0	170.0					
30-1/4		170.0	170.0	170.0	170.0	170.0	170.0	170.0	170.0	170.0	170.0	170.0	170.0	170.0	170.0	170.0					
36-1/4		162.9	170.0	170.0	170.0	170.0	170.0	170.0	170.0	170.0	170.0	168.7	170.0	170.0	170.0	170.0					
42-1/4		146.9	170.0	170.0	170.0	170.0	170.0	170.0	170.0	170.0	170.0	152.1	170.0	170.0	170.0	170.0					
48-1/4		135.6	170.0	170.0	170.0	170.0	170.0	170.0	170.0	170.0	170.0	140.4	170.0	170.0	160.2	170.0					
54-1/4		127.4	169.9	170.0	170.0	170.0	170.0	170.0	162.0	170.0	170.0	131.9	170.0	170.0	150.6	170.0					
60-1/4		121.6	162.2	170.0	170.0	170.0	170.0	170.0	154.7	170.0	170.0	125.9	167.9	170.0	143.8	170.0					
24-1/4	84	170.0	170.0	170.0	170.0	170.0	170.0	170.0	170.0	170.0	170.0	170.0	170.0	170.0	170.0	170.0					
30-1/4		170.0	170.0	170.0	170.0	170.0	170.0	170.0	170.0	170.0	170.0	170.0	170.0	170.0	170.0	170.0					
36-1/4		153.0	170.0	170.0	170.0	170.0	170.0	170.0	170.0	170.0	170.0	158.5	170.0	170.0	170.0	170.0					
42-1/4		137.6	170.0	170.0	170.0	170.0	170.0	170.0	170.0	170.0	170.0	142.5	170.0	170.0	162.6	170.0					
48-1/4		126.5	168.7	170.0	170.0	170.0	170.0	170.0	160.9	170.0	170.0	131.0	170.0	170.0	149.5	170.0					
54-1/4		118.4	157.9	170.0	170.0	170.0	170.0	170.0	150.7	170.0	170.0	122.6	163.5	170.0	140.0	170.0					
60-1/4		112.6	150.1	170.0	170.0	170.0	170.0	170.0	143.2	170.0	170.0	116.6	155.4	170.0	133.1	170.0					
24-1/4	90	170.0	170.0	170.0	170.0	170.0	170.0	170.0	170.0	170.0	170.0	170.0	170.0	170.0	170.0	170.0					
30-1/4		161.4	170.0	170.0	170.0	170.0	170.0	170.0	170.0	170.0	170.0	167.1	170.0	170.0	170.0	170.0					
36-1/4		140.3	170.0	170.0	170.0	170.0	170.0	170.0	170.0	170.0	170.0	145.2	170.0	170.0	165.8	170.0					
42-1/4		125.6	167.5	170.0	170.0	170.0	170.0	170.0	159.7	170.0	170.0	130.0	170.0	170.0	148.5	170.0					
48-1/4		115.0	153.3	170.0	170.0	170.0	170.0	170.0	146.2	170.0	170.0	119.1	158.7	170.0	135.9	170.0					
54-1/4		107.1	142.9	170.0	170.0	170.0	170.0	170.0	136.3	170.0	170.0	110.9	147.9	170.0	126.7	168.9					
60-1/4		101.3	135.1	168.8	170.0	170.0	170.0	170.0	128.9	170.0	170.0	104.9	139.9	170.0	119.8	159.7					
24-1/4	96	170.0	170.0	170.0	170.0	170.0	170.0	170.0	170.0	170.0	170.0	170.0	170.0	170.0	170.0	170.0					
30-1/4		149.4	170.0	170.0	170.0	170.0	170.0	170.0	170.0	170.0	170.0	154.7	170.0	170.0	170.0	170.0					
36-1/4		129.5	170.0	170.0	170.0	170.0	170.0	170.0	164.7	170.0	170.0	134.1	170.0	170.0	153.0	170.0					
42-1/4		115.5	154.0	170.0	170.0	170.0	170.0	170.0	146.9	170.0	170.0	119.6	159.5	170.0	136.6	170.0					
48-1/4		105.4	140.5	170.0	170.0	170.0	170.0	170.0	134.0	170.0	170.0	109.1	145.5	170.0	124.6	166.1					
54-1/4		97.8	130.4	163.0	168.1	170.0	170.0	170.0	124.4	165.9	170.0	101.3	135.0	168.8	115.6	154.2					
60-1/4		92.1	122.8	153.5	158.3	170.0	170.0	170.0	117.1	156.2	170.0	95.3	127.1	158.9	108.8	145.1					
24-1/4	102	167.7	170.0	170.0	170.0	170.0	170.0	170.0	170.0	170.0	170.0	170.0	170.0	170.0	170.0	170.0					
30-1/4		139.1	170.0	170.0	170.0	170.0	170.0	170.0	170.0	170.0	170.0	144.0	170.0	170.0	164.4	170.0					
36-1/4		120.2	160.3	170.0	170.0	170.0	170.0	170.0	152.9	170.0	170.0	124.5	166.0	170.0	142.1	170.0					
42-1/4		107.0	142.6	170.0	170.0	170.0	170.0	170.0	136.0	170.0	170.0	110.8	147.7	170.0	126.4	168.6					
48-1/4		97.3	129.7	162.1	167.2	170.0	170.0	170.0	123.7	164.9	170.0	100.7	134.3	167.9	115.0	153.3					
54-1/4		90.0	120.0	150.0	154.6	170.0	170.0	170.0	114.4	152.6	170.0	93.2	124.2	155.3	106.4	141.8					
60-1/4		84.4	112.5	140.7	145.0	170.0	170.0	170.0	107.3	143.1	170.0	87.4	116.5	145.6	99.8	133.0					
24-1/4	108	157.2	170.0	170.0	170.0	170.0	170.0	170.0	170.0	170.0	162.8	170.0	170.0	170.0	170.0	170.0					
30-1/4		130.1	170.0	170.0	170.0	170.0	170.0	170.0	165.5	170.0	170.0	134.7	170.0	170.0	153.8	170.0					
36-1/4		112.2	149.6	170.0	170.0	170.0	170.0	170.0	142.7	170.0	170.0	116.2	154.9	170.0	132.6	170.0					
42-1/4		99.6	132.8	166.0	170.0	170.0	170.0	170.0	126.6	168.9	170.0	103.1	137.5	170.0	117.7	156.9					
48-1/4		90.3	120.4	150.5	155.2	170.0	170.0	170.0	114.9	153.1	170.0	93.5	124.7	155.8	106.7	142.3					
54-1/4		83.3	111.1	138.8	143.2	170.0	170.0	170.0	105.9	141.3	170.0	86.3	115.0	143.8	98.5	131.3					
60-1/4		77.9	103.9	129.8	133.9	170.0	170.0	170.0	99.1	132.1	165.1	80.7	107.5	134.4	92.1	122.8					
24-1/4	114	147.9	170.0	170.0	170.0	170.0	170.0	170.0	170.0	170.0	153.2	170.0	170.0	170.0	170.0	170.0					
30-1/4		122.2	162.9	170.0	170.0	170.0	170.0	170.0	155.4	170.0	170.0	126.5	168.7	170.0	144.4	170.0					
36-1/4		105.2	140.2	170.0	170.0	170.0	170.0	170.0	133.7	170.0	170.0	108.9	145.2	170.0	124.3	165.7					
42-1/4		93.1	124.2	155.2	160.1	170.0	170.0	170.0	118.5	157.9	170.0	96.4	128.6	160.7	110.1	146.8					
48-1/4		84.3	112.4	140.5	144.8	170.0	170.0	170.0	107.2	142.9	170.0	87.3	116.4	145.4	99.6	132.8					
54-1/4		77.5	103.4	129.2	133.3	170.0	170.0	170.0	98.6	131.5	164.4	80.3	107.1	133.8	91.7	122.2					
60-1/4		72.3	96.4	120.5	124.3	165.7	170.0	170.0	92.0	122.6	153.3	74.9	99.8	124.8	85.5	114.0					
24-1/4	120	139.7	170.0	170.0	170.0	170.0	170.0	170.0	170.0	170.0	144.7	170.0	170.0	165.1	170.0	170.0					
30-1/4		115.2	153.6	170.0	170.0	170.0	170.0	170.0	146.5	170.0	170.0	119.3	159.0	170.0	136.2	170.0					
36-1/4		99.0	132.0	164.9	170.0	170.0	170.0	170.0	125.9	167.8	170.0	102.5	136.6	170.0	117.0	156.0					
42-1/4		87.5	116.6	145.8	150.4	170.0	170.0	170.0	111.3	148.4	170.0	90.6	120.8	151.0	103.4	137.9					
48-1/4		79.0	105.3	131.7	135.8	170.0	170.0	170.0	100.5	134.0	167.5	81.8	109.1	136.3	93.4	124.5					
54-1/4		72.5	96.7	120.9	124.7	166.2	170.0	170.0	92.3	123.0	153.8	75.1	100.1	125.2	85.7	114.3					
60-1/4		67.5	90.0	112.5	116.0	154.7	170.0	170.0	85.8	114.5	143.1	69.9	93.2	116.5	79.8	106.4					

INTERPOLATION BETWEEN WIDTHS AND HEIGHTS ACCEPTABLE

NOTE:  
SEE SHEET 8 FOR ANCHOR TYPES AND DETAILS.  
ANCHOR CAPACITIES LISTED ON THIS SHEET TO BE USED IN CONJUNCTION WITH GLASS/REINFORCING AND MULLION CHARTS IN THIS DOCUMENT.  
LOWER APPLICABLE VALUES CONTROL.

June 12, 2008  
08-0304.05  
Ismael I. Chanda

afc

AL-FAROOQ CORPORATION  
ENGINEERS & PRODUCT DEVELOPMENT  
1235 S.W. 87 AVE  
MIAMI, FLORIDA 33174  
TEL. (305) 264-8100 FAX. (305) 262-6978  
COMP-ANL\W08-14CGI

---

SERIES-560 ALUM SLIDING GLASS DOOR (L.M.I.)

CGI WINDOWS & DOORS

10100 N.W. 25TH STREET  
MIAMI, FL. 33172  
TEL. (305) 593-6590 FAX. (305) 593-6592

---

no.	date	description	REV. PER	BCCO COMMENTS
A	04.18.08			
B	05.16.08			

---

date: 02-08-08  
 scale: -  
 dr. by: HAMID  
 chk. by:

---

drawing no.  
**W08-14**

sheet 5 of 13

Engr: DR. HUMAYOON FAROOQ  
STRUCTURES  
FLA. PE # 16557  
C.A.N. 3538

MAY 19 2008

DESIGN LOAD CAPACITY - PSF (ANCHORS)

PANEL WIDTH INCHES	DOOR HEIGHT INCHES	ANCHORS TYPE 'D'						ANCHORS TYPE 'E'						
		1/2" SHIM SPACE			1/4" SHIM SPACE			3/8" SHIM SPACE			1/2" SHIM SPACE			
		CLUSTER OF			CLUSTER OF			CLUSTER OF			CLUSTER OF			
		3	4	5	3	4	5	3	4	5	3	4	5	
24-1/4	80		170.0	170.0	170.0	170.0	170.0	170.0	170.0	170.0	170.0	170.0	170.0	170.0
30-1/4			149.0	170.0	170.0	170.0	170.0	170.0	170.0	170.0	170.0	154.2	170.0	170.0
36-1/4			130.3	170.0	170.0	170.0	170.0	170.0	165.8	170.0	170.0	134.9	170.0	170.0
42-1/4			117.5	156.7	170.0	170.0	170.0	170.0	149.5	170.0	170.0	121.7	162.3	170.0
48-1/4			108.4	144.5	170.0	170.0	170.0	170.0	137.9	170.0	170.0	112.3	149.8	170.0
54-1/4			101.9	135.8	169.9	170.0	170.0	170.0	129.6	170.0	170.0	105.5	140.8	170.0
60-1/4			97.3	129.7	162.2	167.2	170.0	170.0	123.7	165.0	170.0	100.7	134.4	167.9
24-1/4		84		167.7	170.0	170.0	170.0	170.0	170.0	170.0	170.0	170.0	170.0	170.0
30-1/4			140.3	170.0	170.0	170.0	170.0	170.0	170.0	170.0	170.0	145.3	170.0	170.0
36-1/4			122.4	163.2	170.0	170.0	170.0	170.0	155.7	170.0	170.0	126.8	169.1	170.0
42-1/4			110.0	146.7	170.0	170.0	170.0	170.0	140.0	170.0	170.0	113.9	152.0	170.0
48-1/4			101.2	134.9	168.7	170.0	170.0	170.0	128.7	170.0	170.0	104.8	139.8	170.0
54-1/4			94.7	126.3	157.9	162.9	170.0	170.0	120.5	160.7	170.0	98.1	130.9	163.5
60-1/4			90.1	120.0	150.1	154.8	170.0	170.0	114.5	152.8	170.0	93.3	124.4	155.4
24-1/4	90			154.8	170.0	170.0	170.0	170.0	170.0	170.0	170.0	160.3	170.0	170.0
30-1/4			129.1	170.0	170.0	170.0	170.0	170.0	164.2	170.0	170.0	133.6	170.0	170.0
36-1/4			112.2	149.6	170.0	170.0	170.0	170.0	142.7	170.0	170.0	116.2	155.0	170.0
42-1/4			100.5	133.9	167.5	170.0	170.0	170.0	127.8	170.0	170.0	104.0	138.8	170.0
48-1/4			92.0	122.6	153.3	158.1	170.0	170.0	117.0	156.0	170.0	95.2	127.0	158.7
54-1/4			85.7	114.2	142.9	147.3	170.0	170.0	109.0	145.4	170.0	88.7	118.4	147.9
60-1/4			81.0	108.0	135.1	139.3	170.0	170.0	103.1	137.5	170.0	83.9	111.9	139.9
24-1/4		96		143.7	170.0	170.0	170.0	170.0	170.0	170.0	170.0	148.8	170.0	170.0
30-1/4			119.5	159.3	170.0	170.0	170.0	170.0	152.0	170.0	170.0	123.7	165.0	170.0
36-1/4			103.6	138.0	170.0	170.0	170.0	170.0	131.7	170.0	170.0	107.2	143.0	170.0
42-1/4			92.4	123.2	154.0	158.9	170.0	170.0	117.5	156.8	170.0	95.7	127.6	159.5
48-1/4			84.3	112.4	140.5	144.9	170.0	170.0	107.2	143.0	170.0	87.3	116.4	145.5
54-1/4			78.2	104.3	130.4	134.5	170.0	170.0	99.5	132.7	165.9	81.0	108.1	135.0
60-1/4			73.7	98.2	122.8	126.6	168.8	170.0	93.7	125.0	156.2	76.3	101.7	127.1
24-1/4	102			134.1	170.0	170.0	170.0	170.0	170.0	170.0	170.0	138.9	170.0	170.0
30-1/4			111.2	148.3	170.0	170.0	170.0	170.0	141.5	170.0	170.0	115.2	153.6	170.0
36-1/4			96.1	128.2	160.3	165.3	170.0	170.0	122.3	163.1	170.0	99.6	132.8	166.0
42-1/4			85.5	114.0	142.6	147.1	170.0	170.0	108.8	145.1	170.0	88.6	118.2	147.7
48-1/4			77.8	103.7	129.7	133.7	170.0	170.0	99.0	132.0	164.9	80.6	107.5	134.3
54-1/4			72.0	95.9	120.0	123.7	164.9	170.0	91.5	122.1	152.6	74.5	99.4	124.2
60-1/4			67.5	90.0	112.5	116.1	154.7	170.0	85.9	114.5	143.1	69.9	93.2	116.5
24-1/4		108		125.7	167.6	170.0	170.0	170.0	170.0	159.9	170.0	170.0	130.2	170.0
30-1/4			104.0	138.7	170.0	170.0	170.0	170.0	132.3	170.0	170.0	107.7	143.7	170.0
36-1/4			89.7	119.6	149.6	154.3	170.0	170.0	114.1	152.2	170.0	92.9	123.9	154.9
42-1/4			79.6	106.2	132.8	136.9	170.0	170.0	101.3	135.1	168.9	82.5	110.0	137.5
48-1/4			72.2	96.3	120.4	124.2	165.5	170.0	91.9	122.5	153.1	74.8	99.8	124.7
54-1/4			66.6	88.8	111.1	114.5	152.7	170.0	84.7	113.0	141.3	69.0	92.0	115.0
60-1/4			62.3	83.0	103.9	107.1	142.8	170.0	79.2	105.7	132.1	64.5	86.1	107.5
24-1/4	114			118.3	157.7	170.0	170.0	170.0	170.0	150.5	170.0	170.0	122.5	163.4
30-1/4			97.7	130.3	162.9	168.0	170.0	170.0	124.3	165.8	170.0	101.2	135.0	168.7
36-1/4			84.1	112.1	140.2	144.6	170.0	170.0	107.0	142.7	170.0	87.1	116.2	145.2
42-1/4			74.5	99.3	124.2	128.1	170.0	170.0	94.8	126.4	157.9	77.1	102.9	128.6
48-1/4			67.4	89.9	112.4	115.9	154.5	170.0	85.7	114.4	142.9	69.8	93.1	116.4
54-1/4			62.0	82.7	103.4	106.6	142.1	170.0	78.9	105.2	131.5	64.2	85.7	107.1
60-1/4			57.8	77.1	96.4	99.4	132.6	165.7	73.6	98.1	122.6	59.9	79.9	99.8
24-1/4		120		111.7	149.0	170.0	170.0	170.0	170.0	142.1	170.0	170.0	115.7	154.4
30-1/4			92.1	122.8	153.6	158.4	170.0	170.0	117.2	156.3	170.0	95.4	127.3	159.0
36-1/4			79.2	105.5	132.0	136.1	170.0	170.0	100.7	134.3	167.8	82.0	109.3	136.6
42-1/4			70.0	93.3	116.6	120.3	160.4	170.0	89.0	118.7	148.4	72.5	96.7	120.8
48-1/4			63.2	84.2	105.3	108.6	144.8	170.0	80.4	107.2	134.0	65.4	87.3	109.1
54-1/4			58.0	77.3	96.7	99.7	133.0	166.2	73.8	98.4	123.0	60.1	80.1	100.1
60-1/4			54.0	72.0	90.0	92.8	123.7	154.7	68.7	91.6	114.5	55.9	74.6	93.2

INTERPOLATION BETWEEN WIDTHS AND HEIGHTS ACCEPTABLE

NOTE:  
SEE SHEET 8 FOR ANCHOR TYPES AND DETAILS.  
ANCHOR CAPACITIES LISTED ON THIS SHEET TO BE USED IN CONJUNCTION WITH GLASS/REINFORCING AND MULLION CHARTS IN THIS DOCUMENT.  
LOWER APPLICABLE VALUES CONTROL.

Approved as complying with the Florida Building Code  
Date June 12, 2008  
NOA# 08-0304-05  
Miami Dade Product Control Division  
By: [Signature]

**af c**  
**AL-FAROOQ CORPORATION**  
ENGINEERS & PRODUCT DEVELOPMENT  
1235 S.W. 87 AVE  
MIAMI, FLORIDA 33174  
TEL. (305) 264-8100 FAX. (305) 262-6978  
COMP-ANL\W08-14CGI

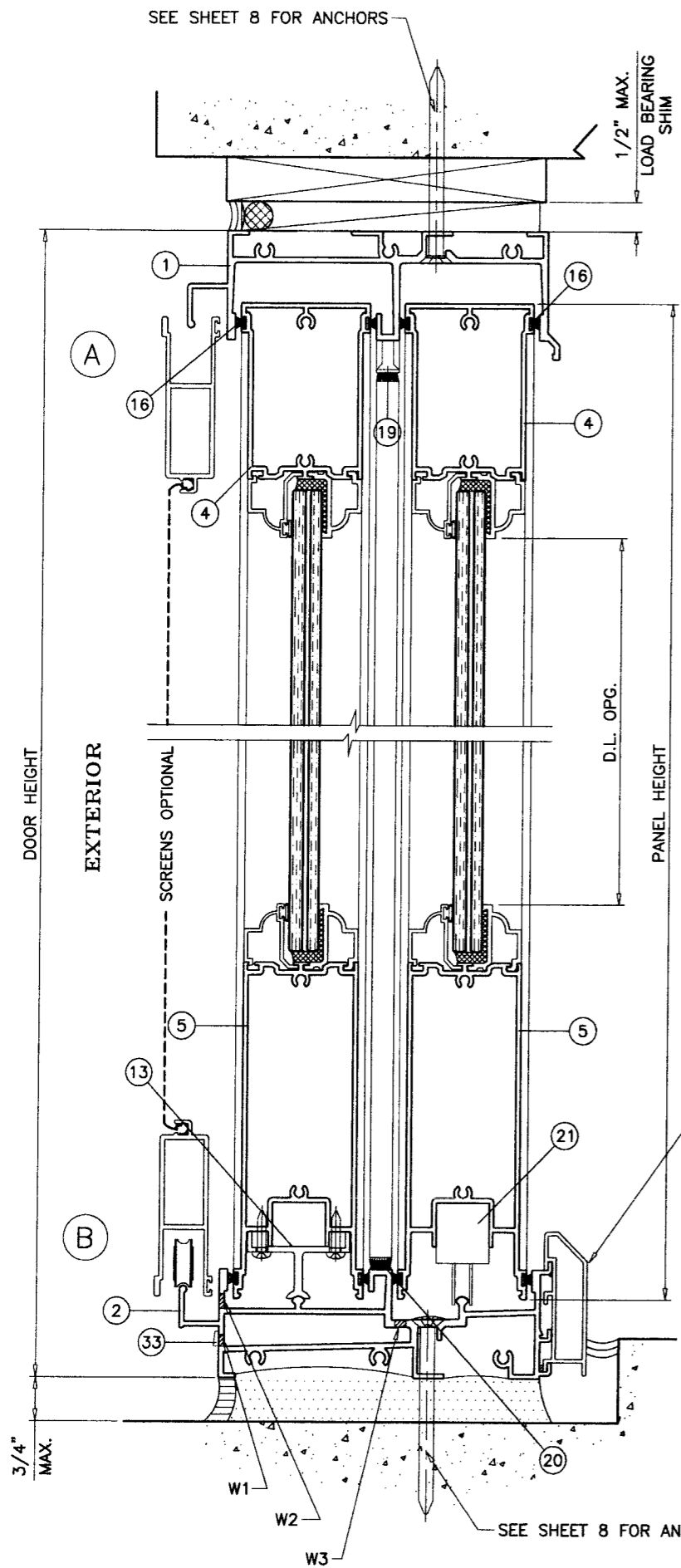
SERIES-560 ALUM SLIDING GLASS DOOR (L.M.I.)  
**CGI WINDOWS & DOORS**  
10100 N.W. 25TH STREET  
MIAMI, FL. 33172  
TEL. (305) 593-6590 FAX. (305) 593-6592

revisions:		no	date	by	description	REV. PER	BCCO	COMMENTS
	B	05.16.08						

date: 02-08-08	scale: -	dr. by: HAMID	chk. by:
----------------	----------	---------------	----------

Engr: DR. HUMAYOON FAROOQ  
STRUCTURES  
FLA. PE # 16557  
C.A.N. 3538  
[Signature]  
MAY 19 2008

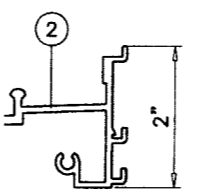
drawing no.  
**W08-14**  
sheet 6 of 13



SEE SHEET 8 FOR ANCHORS

1/2" MAX.  
LOAD BEARING  
SHIM

SILL WITH RISER  
APPROVED FOR  
WATER RESISTANCE  
SEE SHEET 4 FOR CAPACITY



SILL WITHOUT RISER NOT APPROVED FOR INSTALLATIONS WHERE  
WATER INFILTRATION RESISTANCE IS REQUIRED.  
MAX. DESIGN LOAD FOR THIS SILL IS THE SAME AS 4-1/4" RISER.

SEE SHEET 8 FOR ANCHORS

Approved as complying with the  
Florida Building Code  
Date June 12, 2008  
NOA# 08-0304.05  
Miami Dade Product Control  
Division  
*Isaac J. Leonard*

**WEEPS:**

- W1 = .30" X 1-5/8" WEEP SLOTS WITH PLASTIC COVER  
AT 9" FROM EACH END AND ±48" O.C.
- W2 = 1/4" X 2" WEEP SLOTS  
AT 4" FROM EACH END AND ±12" O.C.
- W3 = 1/4" X 5/8" WEEP HOLES  
AT 9" FROM EACH END AND ±48" O.C.

Engr: DR. HUMAYOUN FAROOQ  
STRUCTURES  
FLA. PE # 16557  
C.A.N. 3538  
  
MAY 19 2008

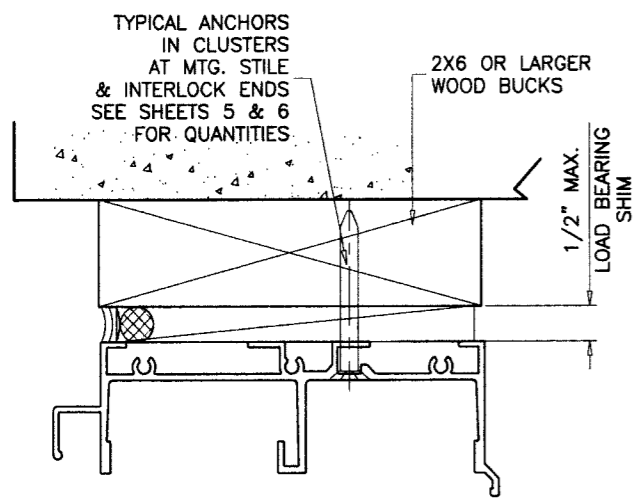
**afc**  
**AL-FAROOQ CORPORATION**  
ENGINEERS & PRODUCT DEVELOPMENT  
1235 S.W. 87 AVE  
MIAMI, FLORIDA 33174  
TEL. (305) 264-8100 FAX. (305) 262-6978  
COMP-ANL\W08-14CGI

SERIES-560 ALUM SLIDING GLASS DOOR (L.M.I.)  
**CGI WINDOWS & DOORS**  
10100 N.W. 25TH STREET  
MIAMI, FL. 33172  
TEL. (305) 593-6590 FAX. (305) 593-6592

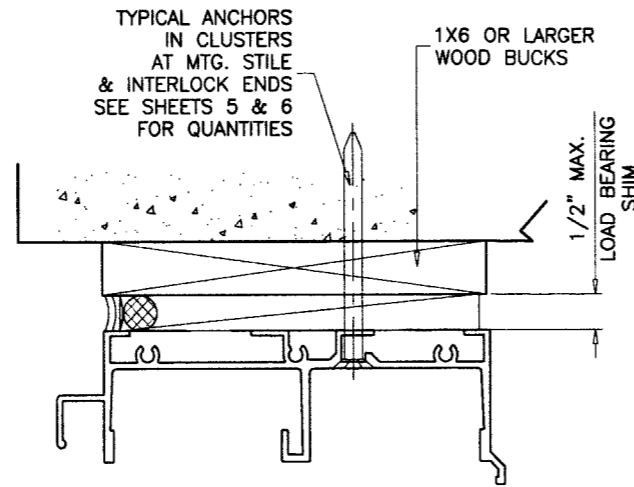
no.	date	description	REV. PER BCCO COMMENTS
A	04.18.08		
B	05.16.08		

date: 02-08-08  
scale: 3/8" = 1"  
dr. by: HAMID  
chk. by:

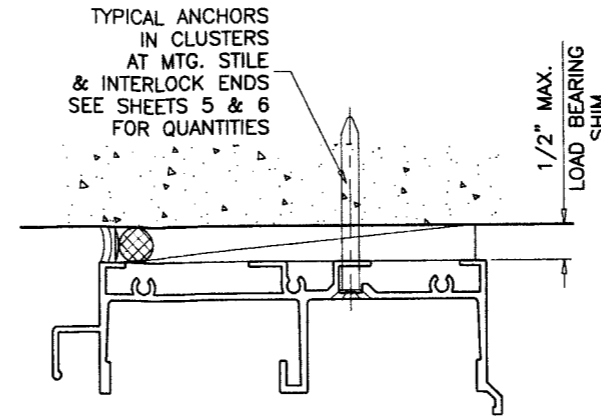
drawing no.  
**W08-14**  
sheet 7 of 13



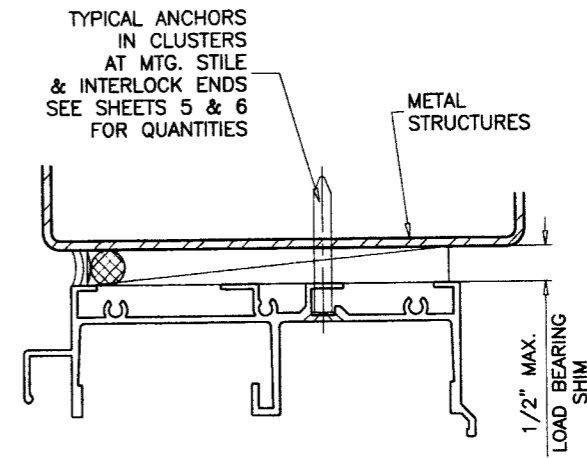
ANCHORS TYPES A AND D INTO 2BY WOOD BUCKS OR WOOD STRUCTURES



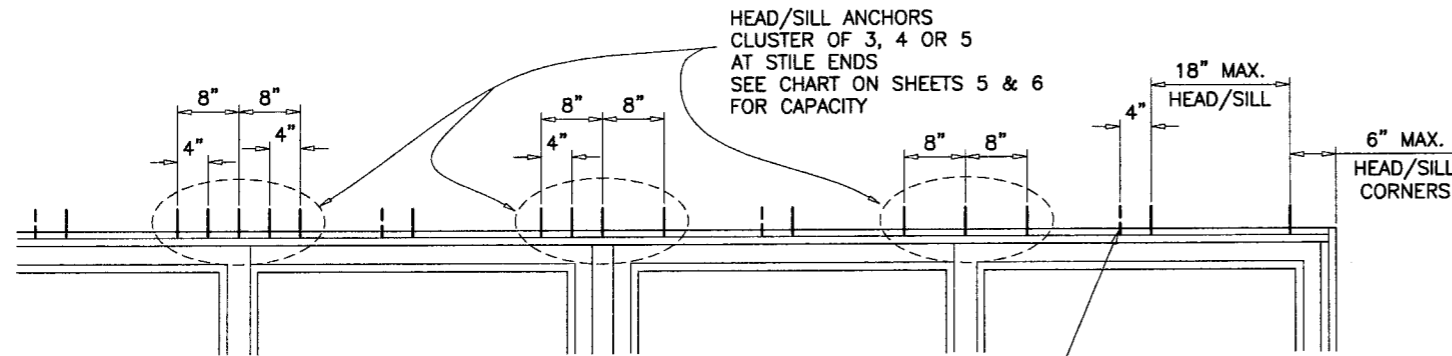
ANCHORS TYPES A AND D THRU 1BY WOOD BUCKS INTO 3 KSI CONCRETE



ANCHORS TYPES B AND E DIRECTLY INTO 3 KSI CONCRETE



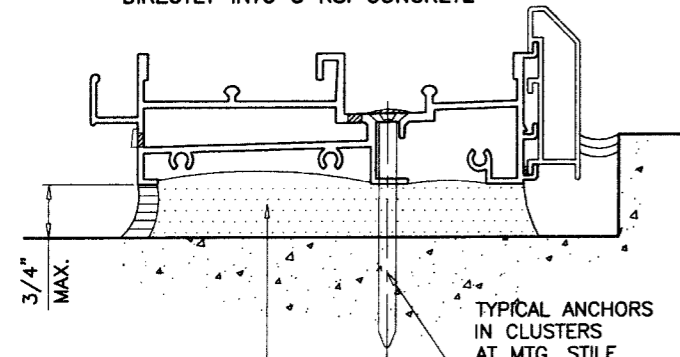
ANCHORS TYPES C INTO METAL STRUCTURES OR APPROVED MULLIONS



HEAD/SILL ANCHORS CLUSTER OF 3, 4 OR 5 AT STILE ENDS SEE CHART ON SHEETS 5 & 6 FOR CAPACITY

INTERMEDIATE HEAD ANCHORS (1) ANCHOR TYPICAL 2ND ANCHOR OPTIONAL INSTALL WHEN REQD. PRESSURE EXCEEDS 105 PSF FOR ANCHORS TYPE 'A' OR 'C' OR WHEN SHIM SPACE EXCEEDS 1/4 IN. FOR ANCHOR TYPE 'B'

ANCHORS TYPES B DIRECTLY INTO 3 KSI CONCRETE



HIGH STRENGTH GROUT  $f'_c = 5000$  PSI MIN. NOT BY C.G.I. MUST TRANSFER SHEAR LOADS TO STRUCTURE

TYPICAL ANCHORS IN CLUSTERS AT MTG. STILE & INTERLOCK ENDS SEE SHEETS 5 & 6 FOR QUANTITIES

**TYPICAL ANCHORS:** SEE ELEV. FOR SPACING

- TYPE 'A' - 5/16" DIA ULTRACON BY 'ELCO' ( $F_u=177$  KSI,  $F_y=155$  KSI) INTO 2BY WOOD BUCKS OR WOOD STRUCTURES WITH 1-1/2" MIN. PENETRATION INTO WOOD THRU 1BY WOOD BUCKS INTO CONCRETE WITH 1-1/4" MIN. EMBED INTO CONCRETE
- TYPE 'B' - 5/16" DIA ULTRACON BY 'ELCO' ( $F_u=177$  KSI,  $F_y=155$  KSI) DIRECTLY INTO CONCRETE WITH 1-1/4" MIN. EMBED INTO CONC.
- TYPE 'C' - #14 SMS OR SELF DRILLING SCREWS ST/ST (GRADE 2 CRS) INTO METAL STRUCTURES  
STEEL : 12 GA. MIN. ( $F_y = 36$  KSI MIN.)  
ALUMINUM : 1/8" THK. MIN. (6063-T5 MIN.)  
(STEEL IN CONTACT WITH ALUMINUM TO BE PLATED OR PAINTED)
- TYPE 'D' - 1/4" DIA HILTI KWIK-CON II ( $F_u=163$  KSI,  $F_y=157$  KSI) INTO 2BY WOOD BUCKS OR WOOD STRUCTURES WITH 1-1/2" MIN. PENETRATION INTO WOOD THRU 1BY WOOD BUCKS INTO CONCRETE WITH 1-1/4" MIN. EMBED INTO CONCRETE
- TYPE 'E' - 1/4" DIA HILTI KWIK-CON II ( $F_u=163$  KSI,  $F_y=157$  KSI) DIRECTLY INTO CONCRETE WITH 1-1/4" MIN. EMBED INTO CONC.

**ANCHOR EDGE DISTANCES**

INTO CONCRETE AND MASONRY = 2-1/2" MIN. AT 1/4" ANCHOR INTO CONCRETE AND MASONRY = 3-1/8" MIN. AT 5/16" ANCHOR INTO WOOD STRUCTURE = 1" MIN. INTO METAL STRUCTURE = 1/2" MIN.

Approved as complying with the Florida Building Code  
Date June 12, 2008  
NOA# 08-0304-05  
Miami Dade Product Control  
Division  
By [Signature]

Engr: DR. HUMAYOUN FAROOQ  
STRUCTURES  
FLA. PE # 16557  
C.A.N. 3538

MAY 19 2008

WOOD BUCKS AND METAL STRUCTURES NOT BY CGI WINDOWS MUST SUSTAIN LOADS IMPOSED BY GLAZING SYSTEM AND TRANSFER THEM TO THE BUILDING STRUCTURE.

**afC**  
**AL-FAROOQ CORPORATION**  
ENGINEERS & PRODUCT DEVELOPMENT  
1235 S.W. 87 AVE  
MIAMI, FLORIDA 33174  
TEL. (305) 264-8100 FAX. (305) 262-6978  
COMP-ANL\W08-14.CGI

SERIES-560 ALUM SLIDING GLASS DOOR (L.M.I.)  
**CGI WINDOWS & DOORS**  
10100 N.W. 25TH STREET  
MIAMI, FL. 33172  
TEL. (305) 593-6590 FAX. (305) 593-6592

revisions:	no	date	description
	A	04.18.08	REV. PER BCCO COMMENTS
	B	05.16.08	REV. PER BCCO COMMENTS

date: 02-08-08  
scale: 3/8" = 1"  
dr. by: HAMID  
chk. by:

drawing no. **W08-14**  
sheet 8 of 13

TYPICAL ANCHORS  
SEE ELEV. FOR SPACING

1/2" MAX.  
LOAD BEARING  
SHIM

REINFORCING AS REQD  
SEE SHEET 3  
FOR CAPACITY

PANEL WIDTH

D.L.O.

PANEL WIDTH

D.L.O.

C

D

E

D.L.O.

PANEL WIDTH

DOOR WIDTH

REINFORCING AS REQD  
SEE SHEET 3  
FOR CAPACITY

EXTERIOR

Approved as complying with the  
Florida Building Code  
Date June 12, 2008  
NOA# 08-0304-05  
Miami Dade Product Control  
Division  
By Shay L. Chandler

1X6 OR LARGER  
WOOD BUCKS

TYPICAL ANCHORS  
SEE ELEV.  
FOR SPACING

1/2" MAX.  
LOAD BEARING  
SHIM

F

PANEL WIDTH

DOOR WIDTH

2X6 OR LARGER WOOD BUCK  
OR  
WOOD STRUCTURE

G

1/2" MAX.  
LOAD BEARING  
SHIM

TYPICAL ANCHORS  
SEE ELEV.  
FOR SPACING

PANEL WIDTH

DOOR WIDTH

H

1/2" MAX.  
LOAD BEARING  
SHIM

ANCHOR LOCATION  
FOR 'O' SINGLE PANELS

METAL  
STRUCTURE

Engr. DR. HUMAYOUN FAROOQ  
STRUCTURES  
FLA. PE # 16557  
C.A.N. 3538

MAY 19 2008

**afc**

**AL-FAROOQ CORPORATION**  
ENGINEERS & PRODUCT DEVELOPMENT  
1235 S.W. 87 AVE  
MIAMI, FLORIDA 33174  
TEL. (305) 264-8100 FAX. (305) 262-6978  
COMP-ANL\W08-14CGI

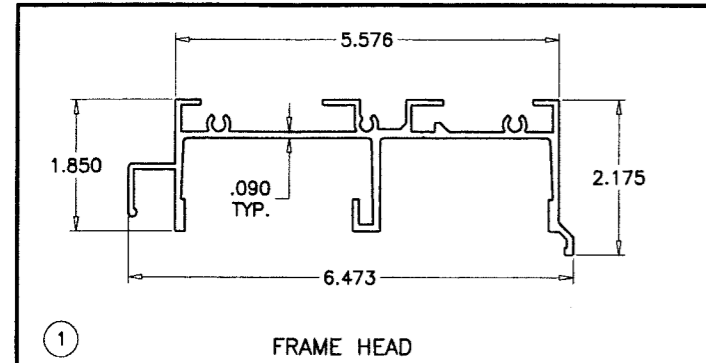
SERIES-560 ALUM SLIDING GLASS DOOR (L.M.I.)

**CGI WINDOWS & DOORS**  
10100 N.W. 25TH STREET  
MIAMI, FL. 33172  
TEL. (305) 593-6590 FAX. (305) 593-6592

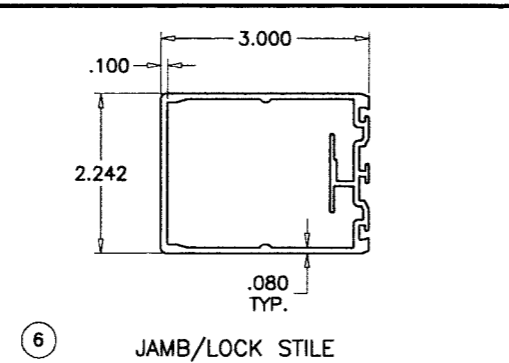
no	date	by	description
A	04.18.08		REV. PER BCCO COMMENTS
B	05.16.08		NO CHANGE THIS SHEET

date: 02-08-08  
scale: 3/8" = 1"  
dr. by: HAMID  
chk. by:

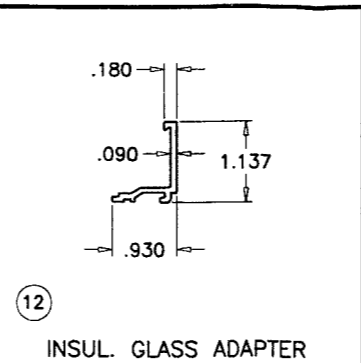
drawing no.  
**W08-14**  
sheet 9 of 13



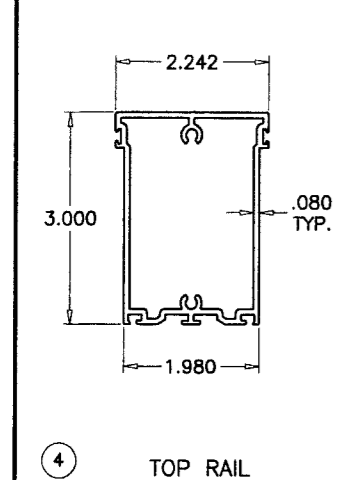
1 FRAME HEAD



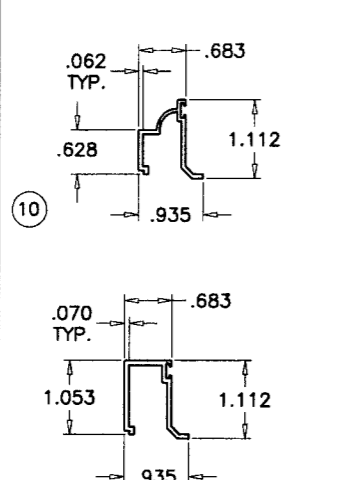
6 JAMB/LOCK STILE



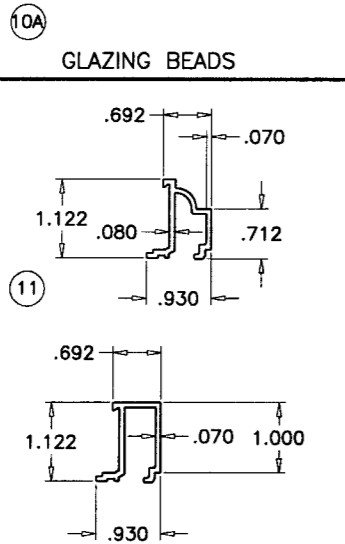
12 INSUL. GLASS ADAPTER



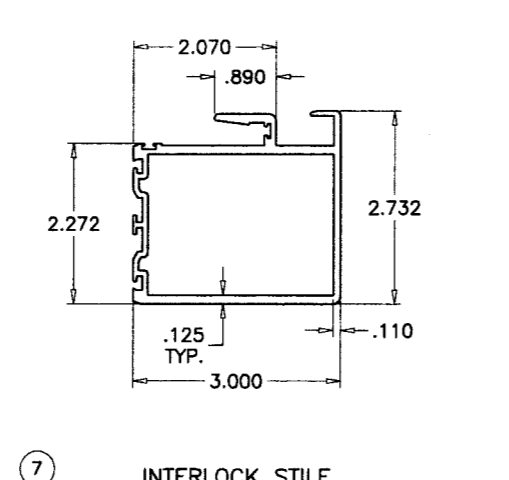
4 TOP RAIL



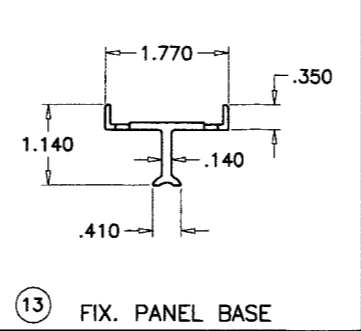
10



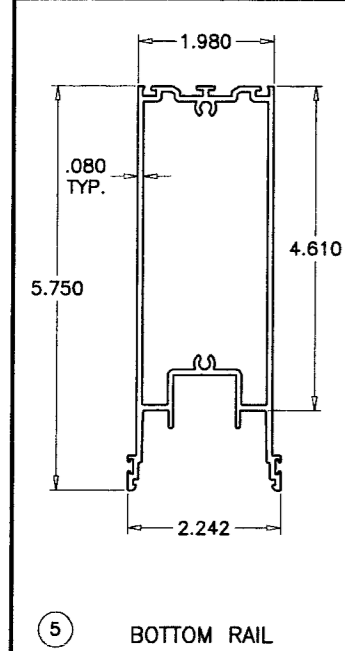
10A



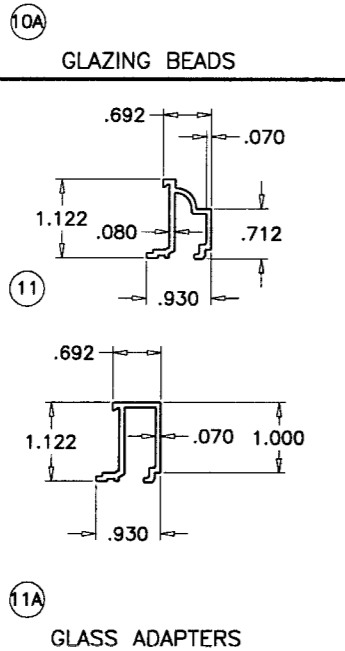
7 INTERLOCK STILE



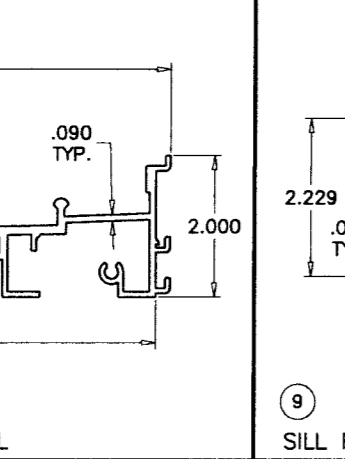
13 FIX. PANEL BASE



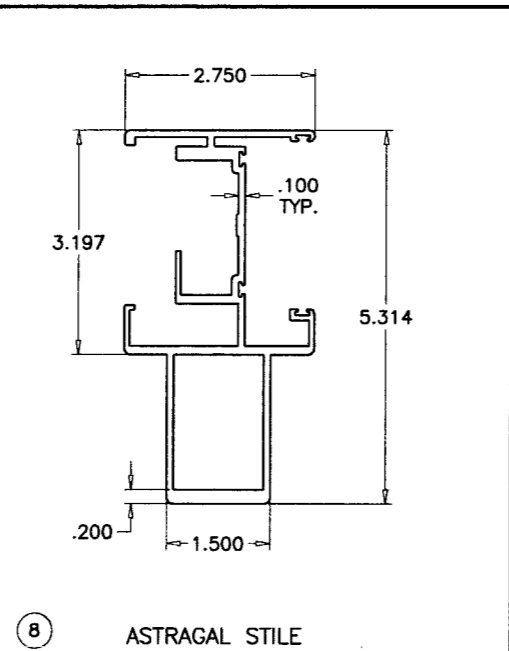
5 BOTTOM RAIL



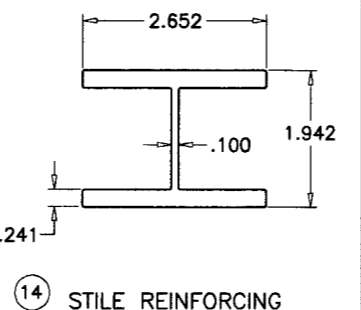
11



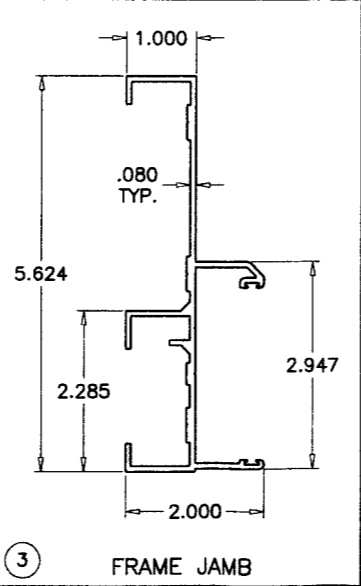
11A



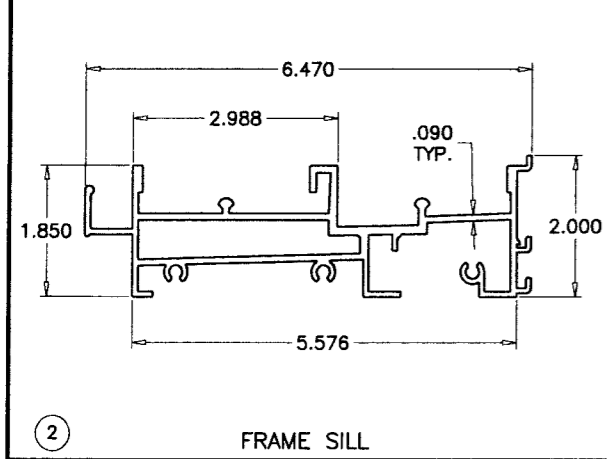
8 ASTRAGAL STILE



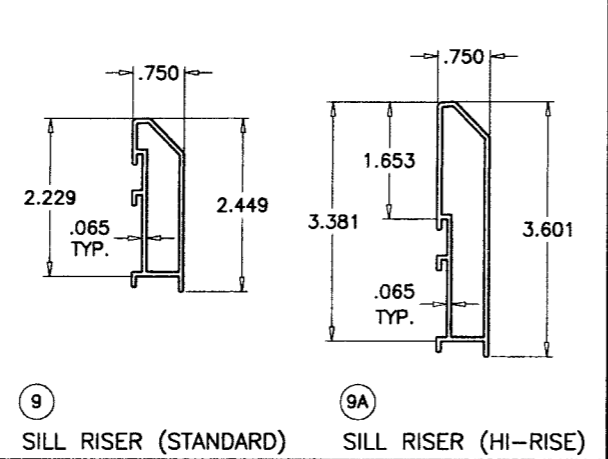
14 STILE REINFORCING



3 FRAME JAMB



2 FRAME SILL



9 SILL RISER (STANDARD)

9A SILL RISER (HI-RISE)

Approved as complying with the Florida Building Code  
 Date June 12, 2008  
 NOA# 08-030410  
 Miami Dade Product Control  
 Division  
 By Shang L. Chande

Engr: DR. HUMAYOUN FAROOQ  
 STRUCTURES  
 FLA. PE # 16557  
 C.A.N. 3538

MAY 19 2008

**afc**  
**AL-FAROOQ CORPORATION**  
 ENGINEERS & PRODUCT DEVELOPMENT  
 1235 S.W. 87 AVE  
 MIAMI, FLORIDA 33174  
 TEL. (305) 264-8100 FAX. (305) 262-8978  
 COMP-ANL\W08-14CGI

SERIES-560 ALUM SLIDING GLASS DOOR (L.M.I.)  
**CGI WINDOWS & DOORS**  
 10100 N.W. 25TH STREET  
 MIAMI, FL. 33172  
 TEL. (305) 593-6590 FAX. (305) 593-6592

no	date	description
A	04.18.08	REV. PER BCCO COMMENTS
B	05.16.08	NO CHANGE THIS SHEET

date: 02-08-08  
 scale: 3/8" = 1"  
 dr. by: HAMID  
 chk. by:

drawing no.  
**W08-14**  
 sheet 10 of 13

ITEM #	PART #	QUANTITY	DESCRIPTION	MATERIAL	MANF./SUPPLIER/REMARKS
1	CGI-550	1	FRAME HEAD	6063-T6	-
2	CGI-551	1	FRAME SILL	6063-T6	-
3	CGI-552	2	FRAME JAMB	6063-T6	-
4	CGI-555	1/ PANEL	TOP RAIL	6063-T6	-
5	CGI-556	1/ PANEL	BOTTOM RAIL	6063-T6	-
6	CGI-557	2/ PANEL	JAMB/LOCK STILE	6063-T6	-
7	CGI-558	AS REQD.	INTERLOCK	6063-T6	-
8	CGI-559	AS REQD.	ASTRAGAL STILE	6063-T6	-
9	CGI-553	AS REQD.	SILL RISER (STANDARD)	6063-T5	-
9A	CGI-553	AS REQD.	SILL RISER (HI-RISE)	6063-T5	-
10	CGI-561	AS REQD.	GLAZING BEAD (COLONIAL)	6063-T5	-
10A	CGI-563	AS REQD.	GLAZING BEAD (SQUARE)	6063-T5	-
11	CGI-562	AS REQD.	GLASS ADAPTER (COLONIAL)	6063-T5	-
11A	CGI-564	AS REQD.	GLASS ADAPTER (SQUARE)	6063-T5	-
12	CGI-565	AS REQD.	GLASS ADAPTER (INSUL. LAM. GLASS)	6063-T6	-
13	CGI-585	2/ FIX. PANEL	FIX. PANEL BASE, 2" LONG	6063-T5	ATTACHED WITH #8 X 3/4" PH PH TEKS
14	CGI-560	AS REQD.	STILE REINFORCING	6063-T6	LENGTH = DOOR HT. - 14"

16	VARIES	VARIES	WOOL PILE WEATHERSTRIPPING WITH FIN	PILE	ULTRAFAB OR EQUAL	.187 BASE X .290 TRI-FIN (USED HORIZONTALLY) .187 BASE X .290 SINGLE CENTER FIN (USED VERTICALLY)
17	CGI-382V	VARIES	GLAZING BEAD BULB	VINYL	CUSTOM EXTRUDED	
18	SILICONE	VARIES	STRUCTURAL SILICONE	RUBBER	GE 1200 OR DOW 995	
19	CGI-584	1	ANTI-LIFT BLOCK	GL REINF NYLON	CUSTOM CGI PART	ABOVE INTERLOCK ATTACHED W/ (2) #10X1" SMS
20	CGI-586	1	ADHESIVE BACKED PILE PAD (.300" HIGH)	PILE	ULTRAFAB OR EQUAL	AT BOTTOM OF EACH INTERLOCK
21	TA-51 OR TA-84	2/ MOV. PANEL	TANDEM S/S ROLLER	S/S	BUILDERS HRDW. OR EQUAL	ATTACHED WITH #8 X 3/4" PH PH TEKS
23	CH-200	1	M.S. COMMERCIAL HOOK BOLT LOCK	S/S MECH.	CUSTOM PART	INCLUDES CGI-580 FACE PLATE TRIM
24	CH-107	1	BRASS THUMBTURN	BRASS/ZINC	CUSTOM PART	1 REQUIRED PER HOOK BOLT
25	CH-109	OPT.	BRASS KEYED EXTERIOR CYLINDER	BRASS/ZINC	CUSTOM PART	OPTIONAL PART
26	CGI-581	1	.850 X 3.875 S/S KEEPER	S/S	CUSTOM PART	ATTACHED W/ (3) #10 X 1" TRUSS HEAD SMS
27	SCREW (FRAME)	12	#12 X 1 1/4" HEX HEAD S/S SMS	S/S	VARIOUS	3 SCREWS PER FRAME CORNER
28	SCREW (PANEL)	8	#10 X 1 1/4" PAN HEAD S/S SMS	S/S	VARIOUS	2 SCREWS PER PANEL CORNER
29	SCREW	2	#8 X 1 1/2" FLAT HEAD TEKS S/S	S/S	VARIOUS	(2) PER FIXED PANEL AT MAXIMUM OF 24" FROM TOP & BOTTOM MOUNTED ON PLASTIC COVER
30	SCREW	VARIES	#10 X 1 1/2" PAN HEAD TEKS S/S	S/S	VARIOUS	AT 6" FROM ENDS AND 24" ON CENTER MAX.
31	CGI-599	VARIES	RUBBER SEAL	RUBBER/FOAM	CUSTOM PART	
32	SIDELITE JAMB CLIP	1/SCREW	3" LONG CLIP (AT "O" CONFIGURATION)	ALUM	CUSTOM PART	CONSISTS OF 1/8 X 3 1/8 X 3" LG PLATE GLUED TO 3/4 X 1 1/2 X 1/8 THK X 3" LG. TUBE
33	HI-FLO WEEPER	VARIES	WEEP HOLE AND COVER	NYLON	PEP	1 WEEP AND COVER AT 9" FROM ENDS AND AT CENTER LINE OF INTERLOCK OR ASTRAGAL

Approved as complying with the Florida Building Code  
Date June 12, 2008  
NOA# 05-0304-05  
Miami Dade Product Control  
Division  
By Skaglund

#### SEALANTS:

ALL FRAME AND PANEL JOINT, INSTALLATION SCREWS AND HEADS OF ANCHOR SCREWS AT SILL TO BE SEALED WITH WHITE/ALUM COLORED SILICONE.

Engr: DR. HUMAYOON FAROOQ  
STRUCTURES  
FLA. PE # 16557  
C.A.N. 3538

MAY 19 2008

**af c**  
**AL-FAROOQ CORPORATION**  
ENGINEERS & PRODUCT DEVELOPMENT  
1236 S.W. 87 AVE  
MIAMI, FLORIDA 33174  
TEL. (305) 264-8100 FAX. (305) 262-6978  
COMP-ANL\W08-14CGI

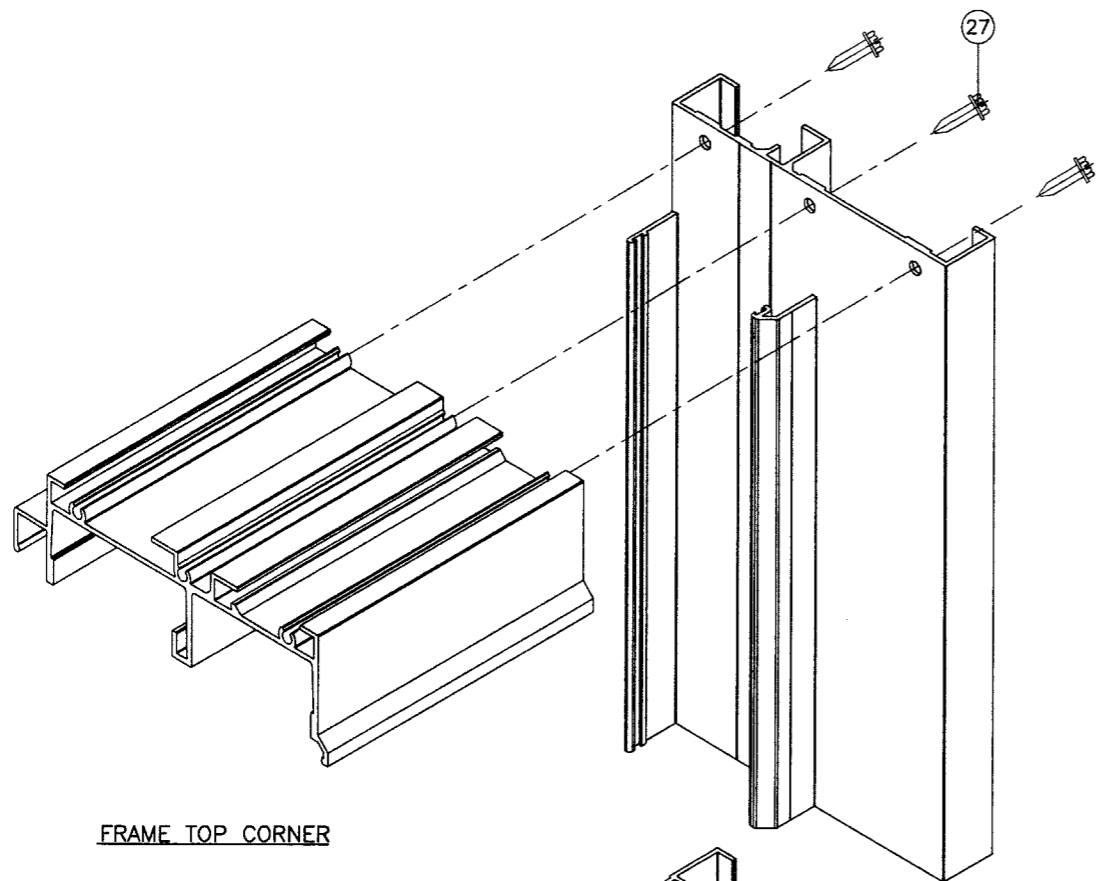
SERIES-560 ALUM SLIDING GLASS DOOR (L.M.I.)  
**CGI WINDOWS & DOORS**  
10100 N.W. 25TH STREET  
MIAMI, FL. 33172  
TEL. (305) 593-6590 FAX. (305) 593-6592

no	date	by	description
1	05.16.08	B	REV. PER BCCO COMMENTS NO CHANGE THIS SHEET

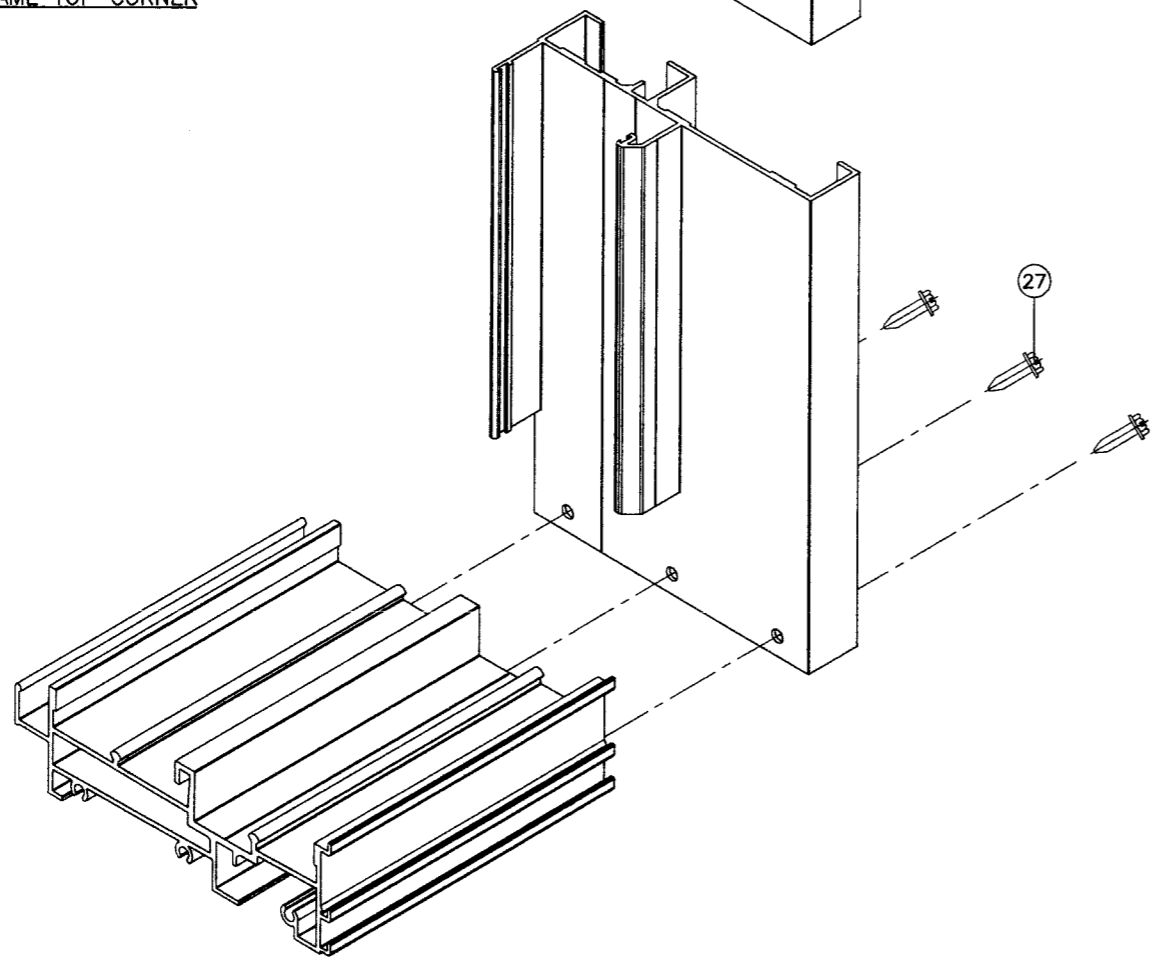
date: 02-08-08  
scale: 3/8" = 1'-0"  
dr. by: HAMID  
chk. by:

drawing no.  
**W08-14**

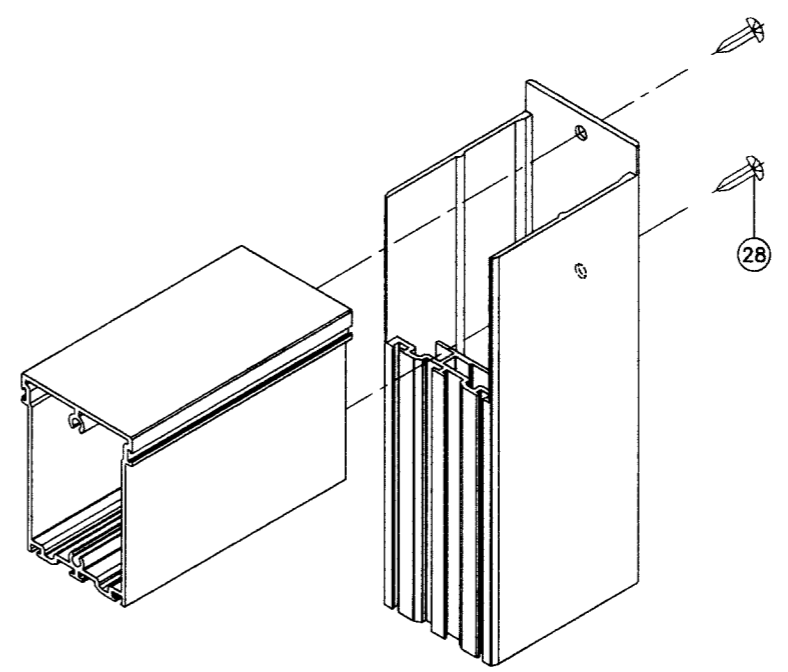
sheet 11 of 13



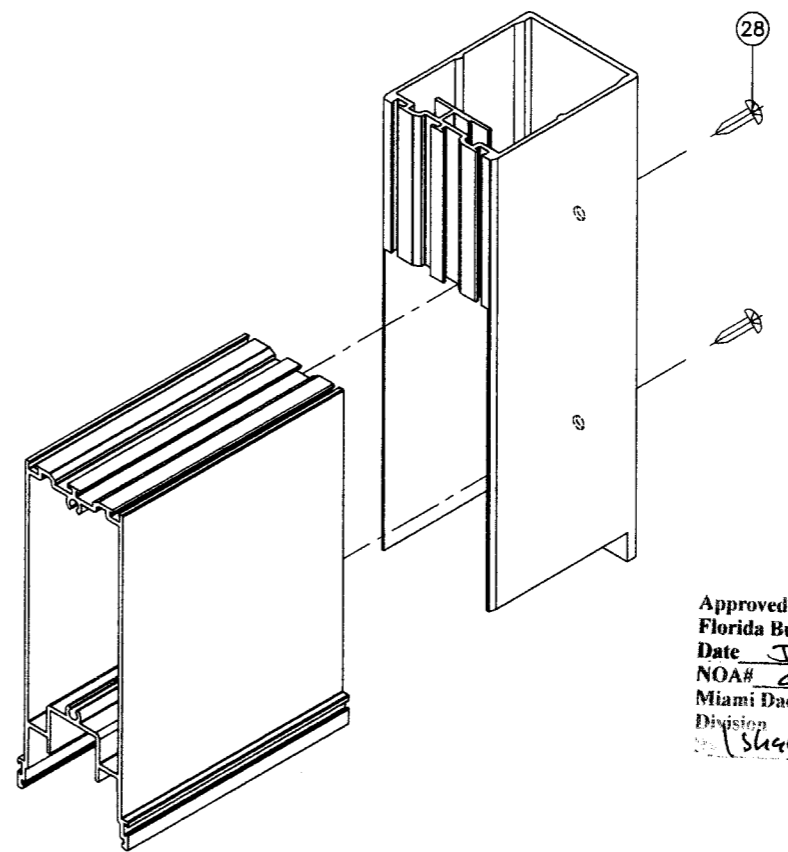
FRAME TOP CORNER



FRAME BOTTOM CORNER



PANEL TOP CORNER




PANEL BOTTOM CORNER

Approved as complying with the  
 Florida Building Code  
 Date June 12, 2008  
 NOA# 08-0304-02  
 Miami Dade Product Control  
 Division  
*Shag I. Claude*

Engr: DR. HUMAYOUN FAROOQ  
 STRUCTURES  
 FLA. PE # 16557  
 C.A.N. 3538

*H*  
 MAY 19 2008



---

**AL-FAROOQ CORPORATION**  
 ENGINEERS & PRODUCT DEVELOPMENT  
 1235 S.W. 87 AVE  
 MIAMI, FLORIDA 33174  
 TEL. (305) 264-8100 FAX. (305) 262-6978  
 COMP-ANL\W08-14CGI

---

SERIES-560 ALUM SLIDING GLASS DOOR (L.M.I.)

**CGI WINDOWS & DOORS**  
 10100 N.W. 25TH STREET  
 MIAMI, FL. 33172  
 TEL. (305) 593-6590 FAX. (305) 593-6592

---

no	date	by	description
A	04.18.08	REV. PER BCCO COMMENTS	
B	05.16.08	NO CHANGE THIS SHEET	

---

date: 02-08-08	scale: 3/8" = 1"	dr. by: HAMID	chk. by:
----------------	------------------	---------------	----------

---

drawing no.  
**W08-14**

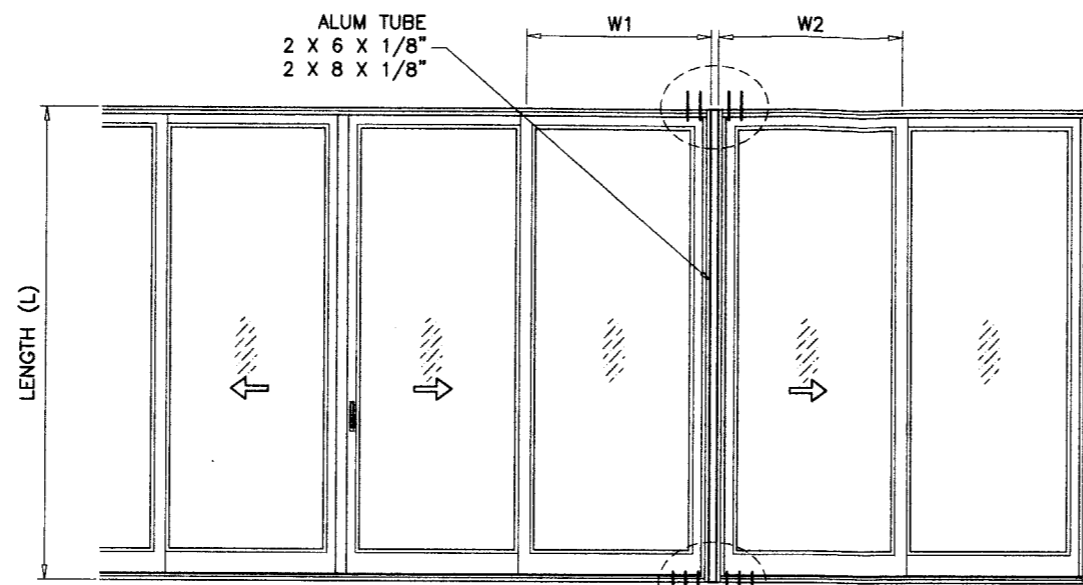
---

sheet 12 of 13

MULLION LOAD CAPACITY - PSF			
DIMS.		2 X 6 X 1/8"	2 X 8 X 1/8"
WIDTH (W) INCHES	LENGTH (L) INCHES	EXT.(+) INT.(-)	EXT.(+) INT.(-)
26-1/4	84	140.0	140.0
32-1/4		140.0	140.0
38-1/4		140.0	140.0
44-1/4		140.0	140.0
50-1/4		140.0	140.0
56-1/4		140.0	140.0
62-1/4		140.0	140.0
26-1/4	90	140.0	140.0
32-1/4		140.0	140.0
38-1/4		140.0	140.0
44-1/4		140.0	140.0
50-1/4		140.0	140.0
56-1/4		133.1	140.0
62-1/4		124.5	140.0
26-1/4	96	140.0	140.0
32-1/4		140.0	140.0
38-1/4		140.0	140.0
44-1/4		138.3	140.0
50-1/4		124.5	140.0
56-1/4		114.1	140.0
62-1/4		106.2	140.0
26-1/4	102	140.0	140.0
32-1/4		140.0	140.0
38-1/4		137.3	140.0
44-1/4		120.7	140.0
50-1/4		108.3	140.0
56-1/4		99.0	140.0
62-1/4		91.8	130.8
26-1/4	108	140.0	140.0
32-1/4		140.0	140.0
38-1/4		121.1	140.0
44-1/4		106.2	140.0
50-1/4		95.1	135.5
56-1/4		86.6	123.5
62-1/4		80.1	114.1
26-1/4	114	140.0	140.0
32-1/4		126.2	140.0
38-1/4		107.5	140.0
44-1/4		94.1	134.1
50-1/4		84.2	119.9
56-1/4		76.5	109.0
62-1/4		137.0	140.0
32-1/4	120	112.6	140.0
38-1/4		96.1	136.8
44-1/4		84.0	119.6
50-1/4		75.0	106.8
56-1/4		68.0	96.9

**NOTES:**

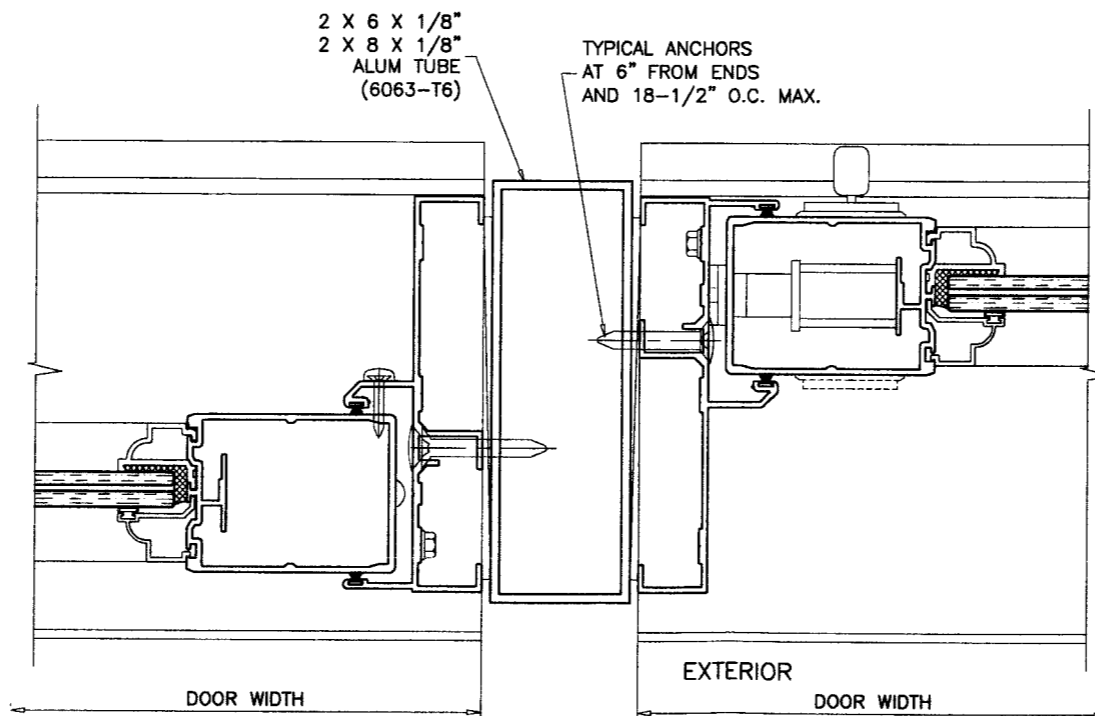
1. USE CHART ON THIS SHEET FOR SIDE BY SIDE CONNECTION CAPACITY OF DOOR MULLION.
2. FOR SLIDING GLASS DOOR CAPACITY SEE SHEET 3.
3. USE CHART ON SHEETS 5 & 6 TO SELECT ANCHOR ARRANGEMENT AT MULLION ENDS.
4. LOWER VALUES FROM STEPS 1, 2 OR 3 WILL APPLY TO ENTIRE SYSTEM.



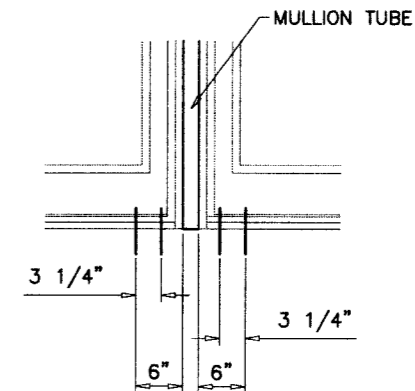
TYPICAL ANCHORS AT MULLION ENDS CLUSTER OF 4 OR 6 SEE SHEET 5 FOR CAPACITY

**TYPICAL ELEVATIONS**  
SIDE BY SIDE S.G. DOOR  
SIDE BY SIDE APPLIES TO TWO OR MORE DOORS

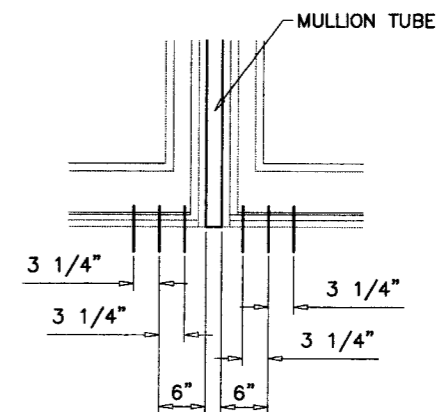
$$\text{WIDTH (W)} = \frac{W1 + W2}{2} + 2$$



**UNCLIPPED MULLION**



**CLUSTER OF 4 ANCHORS**



**CLUSTER OF 6 ANCHORS**

FOR THIS CASE READ VALUES FOR CLUSTER OF 5 ANCHORS ON SHEETS 5 & 6.

Approved as complying with the Florida Building Code  
Date June 12, 2008  
NOA# 08-0304-05  
Miami Dade Product Control Division  
By Shay I. Chaudhry

Engr: DR. HUMAYOON FAROOQ  
STRUCTURES  
FLA. PE # 16557  
C.A.N. 3538

MAY 19 2008

**af c**  
**AL-FAROOQ CORPORATION**  
ENGINEERS & PRODUCT DEVELOPMENT  
1235 S.W. 87 AVE  
MIAMI, FLORIDA 33174  
TEL. (305) 264-8100 FAX. (305) 262-6978  
COMP-ANL\W08-14CGI

SERIES-560 ALUM SLIDING GLASS DOOR (L.M.I.)  
**CGI WINDOWS & DOORS**  
10100 N.W. 25TH STREET  
MIAMI, FL. 33172  
TEL. (305) 593-6590 FAX. (305) 593-6592

no	date	by	description
A	04.18.08		REV. PER BCCO COMMENTS
B	05.16.08		REV. PER BCCO COMMENTS

date: 02-08-08  
scale: 3/8" = 1"  
dr. by: HAMID  
chk. by:

drawing no.  
**W08-14**