



BUILDING CODE COMPLIANCE OFFICE (BCCO)
PRODUCT CONTROL DIVISION

MIAMI-DADE COUNTY, FLORIDA
METRO-DADE FLAGLER BUILDING
140 WEST FLAGLER STREET, SUITE 1603
MIAMI, FLORIDA 33130-1563
(305) 375-2901 FAX (305) 375-2908
www.buildingcodeonline.com

NOTICE OF ACCEPTANCE (NOA)

Construction Glass Industries
10100 N.W. 25 St.
Miami FL., 33172

SCOPE:

This NOA is being issued under the applicable rules and regulations governing the use of construction materials. The documentation submitted has been reviewed by Miami-Dade County Product Control Division and accepted by the Board of Rules and Appeals (BORA) to be used in Miami Dade County and other areas where allowed by the Authority Having Jurisdiction (AHJ).

This NOA shall not be valid after the expiration date stated below. The Miami-Dade County Product Control Division (In Miami Dade County) and/or the AHJ (in areas other than Miami Dade County) reserve the right to have this product or material tested for quality assurance purposes. If this product or material fails to perform in the accepted manner, the manufacturer will incur the expense of such testing and the AHJ may immediately revoke, modify, or suspend the use of such product or material within their jurisdiction. BORA reserves the right to revoke this acceptance, if it is determined by Miami-Dade County Product Control Division that this product or material fails to meet the requirements of the applicable building code.

This product is approved as described herein, and has been designed to comply with the Florida Building Code, including the High Velocity Hurricane Zone.

DESCRIPTION: Series "450" Inswing Aluminum Door w/ Sidelites - Impact

APPROVAL DOCUMENT: Drawing No. **W06-73**, titled "Series 450 Inswing Doors & Sidelites", sheets 1, 1.1 through 7.1 of 7, prepared by Al-Farooq Corporation, dated 10/27/06 and last revised on Nov 08, 2006, signed and sealed by Dr. Humayoun Farooq, P.E., bearing the Miami-Dade County Product Control Renewal stamp with the Notice of Acceptance number and expiration date by the Miami-Dade County Product Control Division.

MISSILE IMPACT RATING: Large and Small Missile Impact

Limitation:

1. Ext design pressure= +50 psf w/ Sill type S-1 and SS type sill is not rated for water infiltration.
2. Full design pressures (see charts) are applicable, where water infiltration requirement is not needed.

LABELING: Each unit shall bear a permanent label with the manufacturer's name or logo, city, state and following statement: "Miami-Dade County Product Control Approved", unless otherwise noted herein.

RENEWAL of this NOA shall be considered after a renewal application has been filed and there has been no change in the applicable building code negatively affecting the performance of this product.

TERMINATION of this NOA will occur after the expiration date or if there has been a revision or change in the materials, use, and/or manufacture of the product or process. Misuse of this NOA as an endorsement of any product, for sales, advertising or any other purposes shall automatically terminate this NOA. Failure to comply with any section of this NOA shall be cause for termination and removal of NOA.

ADVERTISEMENT: The NOA number preceded by the words Miami-Dade County, Florida, and followed by the expiration date may be displayed in advertising literature. If any portion of the NOA is displayed, then it shall be done in its entirety.

INSPECTION: A copy of this entire NOA shall be provided to the user by the manufacturer or its distributors and shall be available for inspection at the job site at the request of the Building Official.

This NOA **revises & renews** NOA # **03-0422.02** and, consists of this page 1 as well as approval document mentioned above.

The submitted documentation was reviewed by **Ishaq I. Chanda, P. E.**



4
3/28/17

NOA No. 07-0228.01
Expiration Date: November 09, 2011
Approval Date: April 19, 2007
Page 1

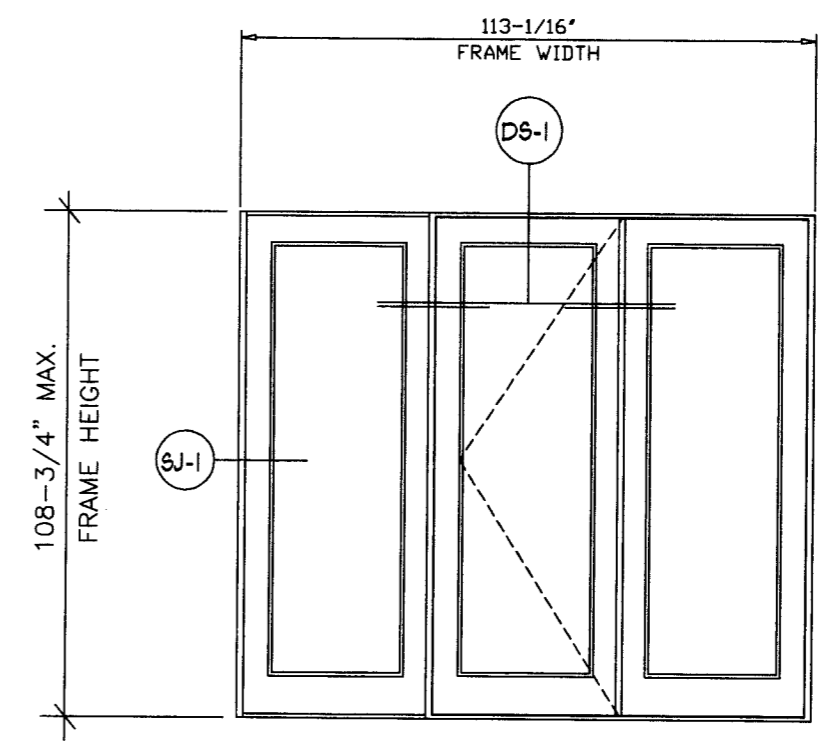
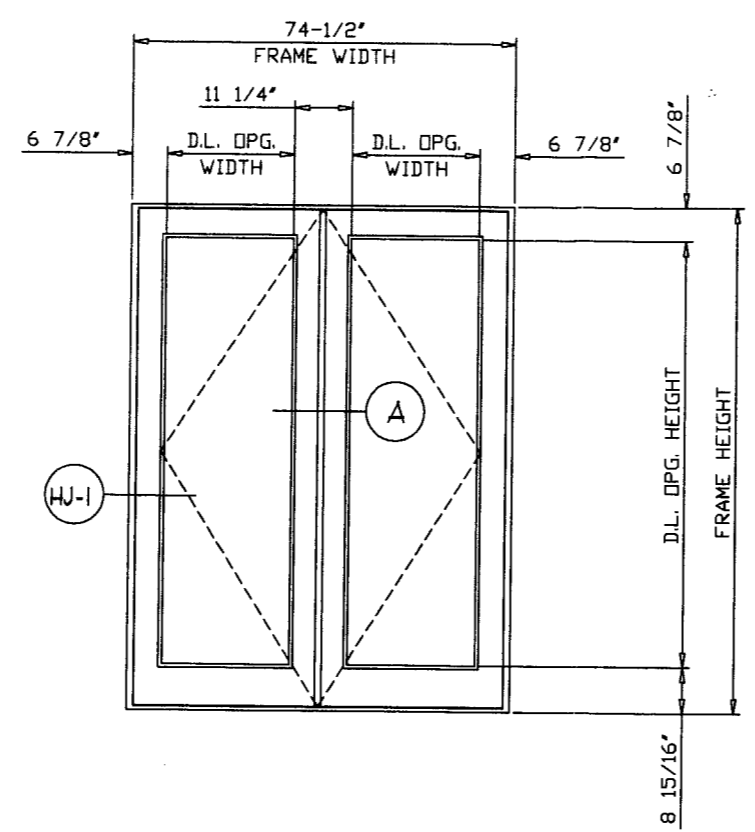
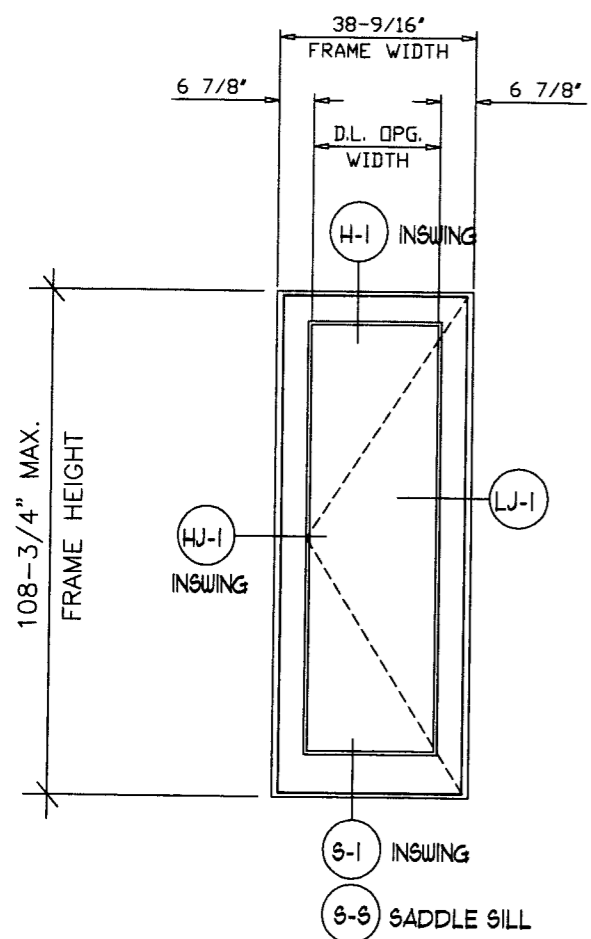
NOTICE OF ACCEPTANCE: EVIDENCE SUBMITTED

- A. DRAWINGS** (transferred from file # **03-0422.02**)
1. Manufacturer's die drawings and sections.
 2. Drawing No. **W06-73**, titled "Series 450 Inswing Doors & Sidelites", sheets 1, 1.1 through 7.1 of 7, prepared by Al-Farooq Corporation, dated 10/27/06 and last revised on Nov 08, 2006, signed and sealed by Dr. Humayoun Farooq, P.E.
- B. TESTS** (transferred from file # **03-0422.02**) Original test conducted per FBC, PA 201, 202 & 203-94 now known as FBC, TAS 201, 202 & 203-94.
1. Test report on
 - 1) Air Infiltration Test, per PA 202-94
 - 2) Uniform Static Air Pressure Test, Loading per PA 202-94
 - 3) Water Resistance Test, per PA 202-94.
 - 4) Forced Entry Test, per SFBC 3603.2 (b) and PA 202-94
 - 5) Large Missile Impact Test per SFBC and PA201-94
 - 6) Cyclic Wind Pressure Loading per SFBC and PA203-94Along with manufacturer's parts and section drawing marked-up drawings of an aluminum In/out swing door w/sidelites, by Hurricane Testing Laboratory, Inc., Test Report No. **HTL-97055 (0080-912-97)** dated 09/23/97 thru 02/27/98 for specimen #1, 2, 3, 4 tested per PA202-94, specimen #4, 5A, 5B, 5C tested per PA201-94 & PA203-94, signed and sealed by Timothy S. Marshall, P.E.
 2. Additional test report on
 - 1) Uniform Static Air Pressure Test, Loading per PA 202-94
 - 2) Large Missile Impact Test per SFBC, PA201-94
 - 3) Cyclic Wind Pressure Loading per SFBC, PA 203-94Along with manufacturer's parts and section drawing marked-up drawings of aluminum out swing door w/sidelites, by Hurricane Testing Laboratory, Inc., Test Report No. **HTL-01071 (0080-0402-02)** dated 04/01/20028 tested per PA201-94 & PA203-94, signed and sealed by Vinu Abraham, P.E.
- C. CALCULATIONS**
1. Anchor verification dated 12-21-05 and last revised on 11/06/06, prepared by Al-Farooq Corp., complying w/ FBC 2004 prepared, signed and sealed by Dr. Humayoun Farooq, P.E.
 2. Glazing complies with ASTM E-1300-02
- D. QUALITY ASSURANCE**
1. Miami Dade Building Code Compliance Office (BCCO).
- E. MATERIAL CERTIFICATIONS**
1. Notice of Acceptance No. 03-0827.08 issued to Solutia, Inc. for "**Solutia Interlayers**", expiring on 03/04/09.
- F. STATEMENTS** (transferred from file# **02-0702.01**).
1. Statement letter of conformance and no financial interest, dated 12-21-05, signed by Dr. Humayoun Farooq, P.E.
 2. Letter of lab compliance, part of the above test reports.
- G. OTHER**
1. This NOA **revises & renews # 03-0422.02, expired on 11-09-06**
 2. **Series 450 Outswing NOA # 06-0127.02 expiring 11-09-11**

Ishaq I. Chanda
Ishaq I. Chanda, P.E.
Product Control Examiner
NOA No. 07-0228.01
Expiration Date: November 09, 2011
Approval Date: April 19, 2007

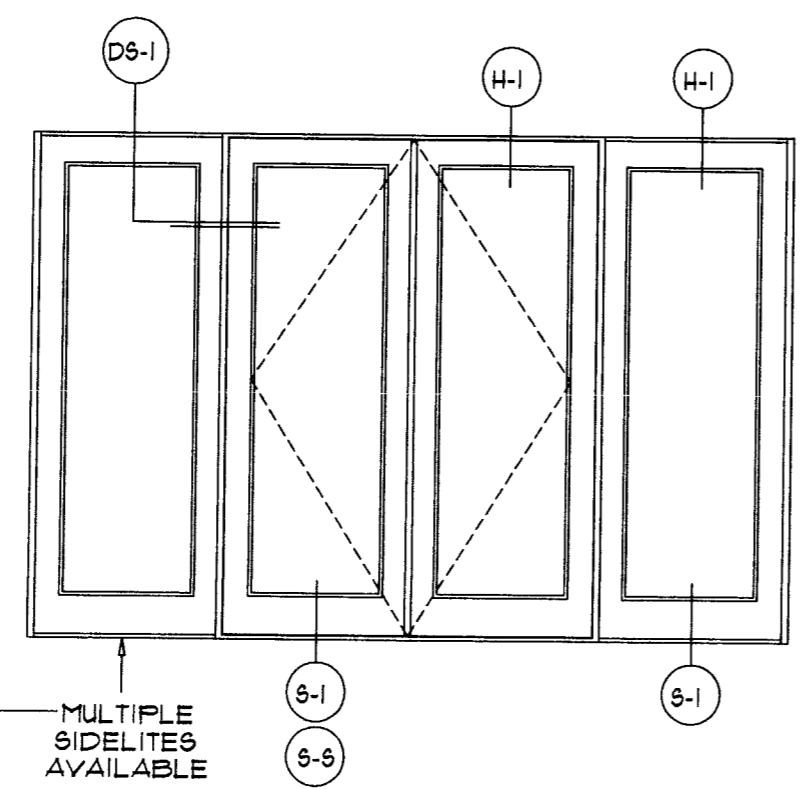
TYPICAL ELEVATIONS

TYPICAL ANCHORS SPACED AS SHOWN IN DETAILS AND CHARTS.
ANCHORS TO BE AT 6" FROM CORNERS
MAX. SPACING 24" O.C. AT HEAD & SILL.



FRAME HEIGHT = PANEL HEIGHT + 1.750"
FRAME WIDTH = PANEL WIDTH + 2.750"

STEPS TO USE CHARTS/GRAPHS
SEE SHEETS 6 & 7.



PANEL WIDTH	D.L. OPG. WIDTH
24"	12-7/8"
30"	18-7/8"
36"	24 7/8"
42"	30-7/8"

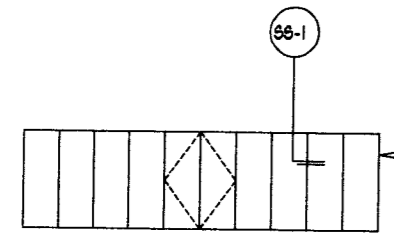
PANEL HEIGHT	D.L. OPG. HEIGHT
80"	66-1/2"
84"	70-1/2"
90"	76-1/2"
96"	82-1/2"
108"	94-1/2"

LEGEND

— I - INSWING DOOR DETAIL

□ - ITEM DESCRIPTION
(see sheet 2 of 7)

W06-73



MULTIPLE SIDELITES AVAILABLE

Engr. DR. HUMAYOON FAROOQ
STRUCTURES
FLA. PE # 16557

NOV 08 2006

PRODUCT RENEWED
as complying with the Florida
Building Code
Acceptance No 07-0228-01
Expiration Date NOV 07, 2011
By Ishaq I. Chaudhry
Miami Dade Product Control
Division

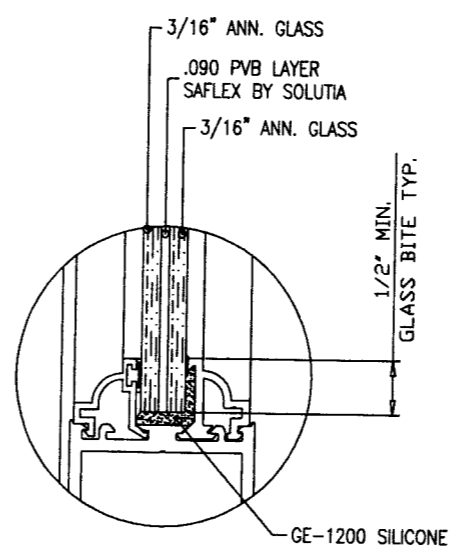
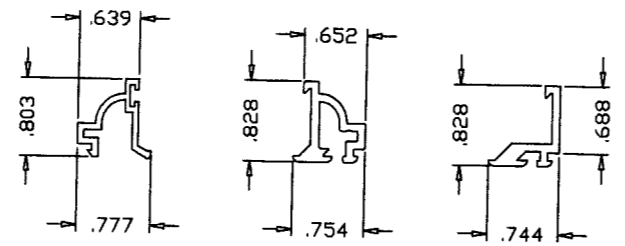
CGI CORPORATION
construction glass industries corporation
10100 northwest 25 street miami, florida 33172

product : Series 450 INSWING Doors & Sidelites

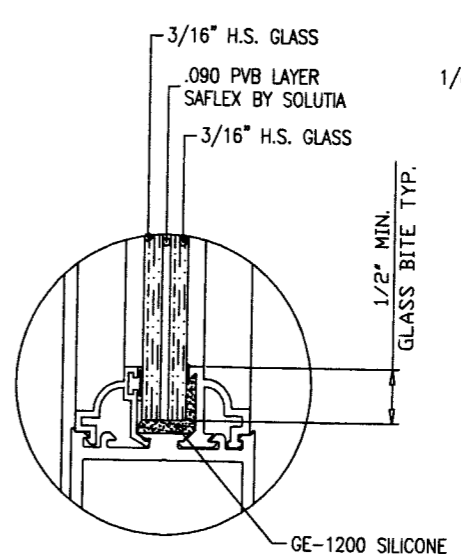
ENGINEER : Al Farooq Corporation
Dr. Humayoun Farooq
Structural -Fla. PE # 16557

date : 10-27-06 sheet 1 of 7

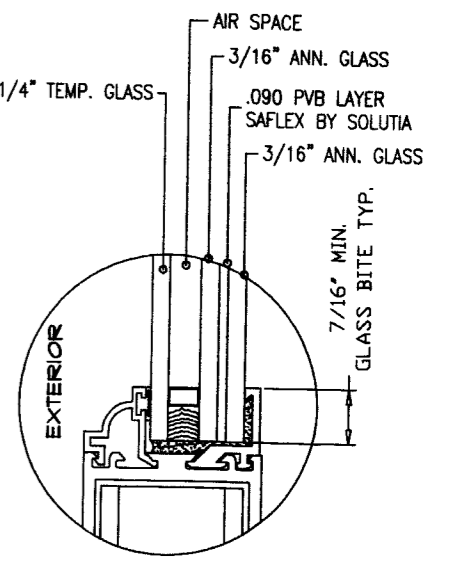
TYPICAL ELEVATIONS



GLASS TYPE 13A

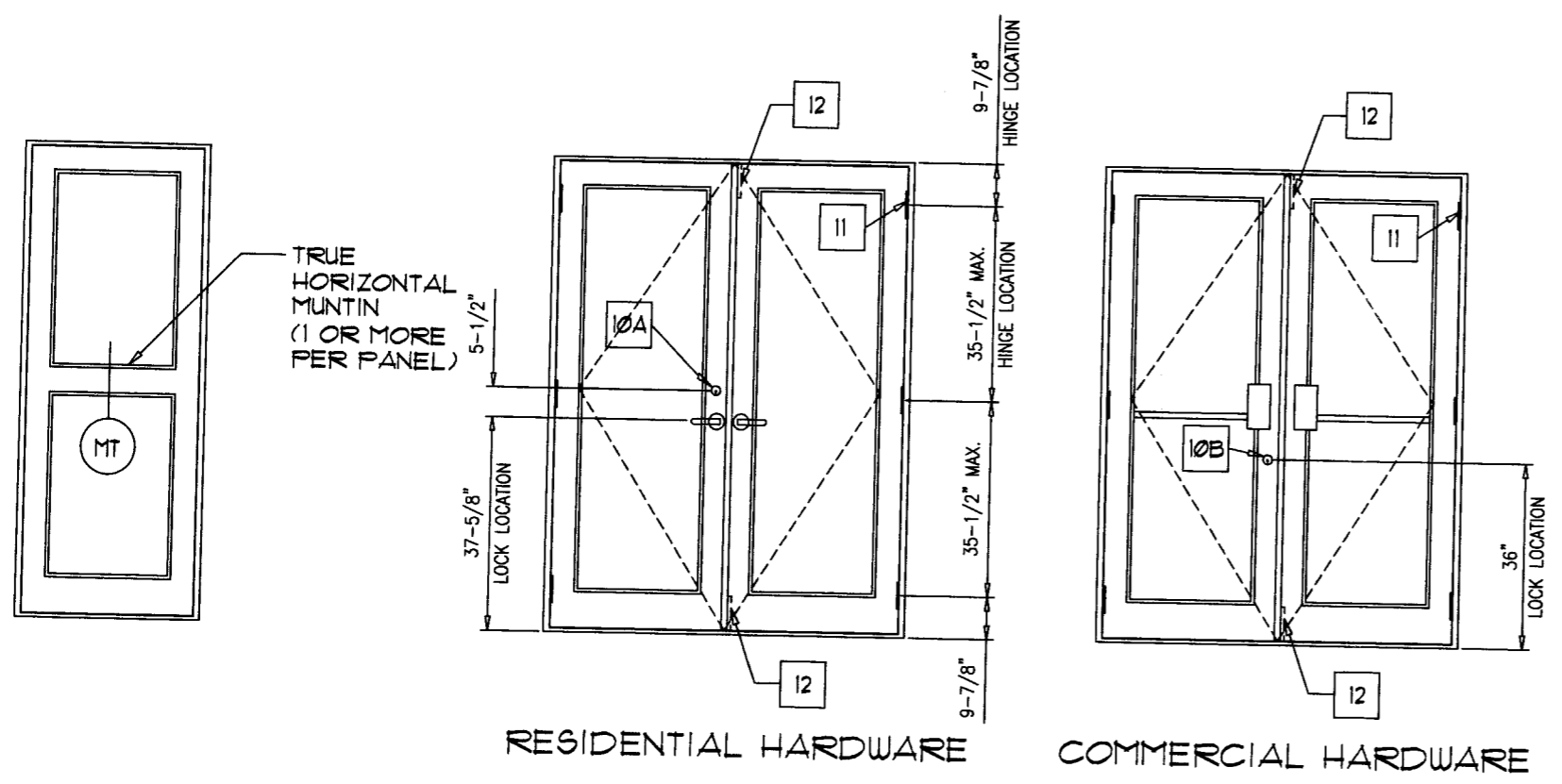


GLASS TYPE 13B



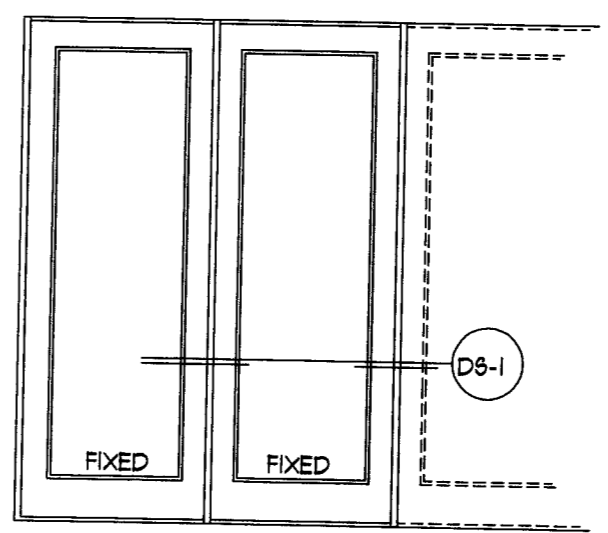
GLASS TYPE 13C

TYPICAL GLAZING DETAILS



RESIDENTIAL HARDWARE

COMMERCIAL HARDWARE



FIXED

FIXED

D6-1

LEGEND

— I — INSWING DOOR DETAIL

□ - ITEM DESCRIPTION (see sheet 2 of 1)

HINGE LOCATIONS		
MAX. DOOR HEIGHT	NO. REQD.	MAX. SPACING
UPTO 90-3/4"	3	35 1/2"
ABOVE 90-3/4"	4	30 1/2"

OPTIONAL TRUE MUNTINS
DOOR OR SIDELITE

HARDWARE DESCRIPTION

Engr. DR. HUMAYOON FAROOQ
STRUCTURES
FLA. PE # 16557

[Signature]
NOV 08 2006

PRODUCT RENEWED
as complying with the Florida
Building Code
Acceptance No 07-0228-01
Expiration Date Nov 09, 2011
By: Ishan J. Khan
Miami Based Product Control
Division

CGI
CORPORATION
construction glass industries corporation
10100 northwest 25 street miami, florida 33172

product : Series 450 Inswing Doors & Sidelites

ENGINEER : Al Farooq Corporation
Dr. Humayoun Farooq
Structural -Fla. PE # 16557

date : 10-27-06

sheet 1.1 of 7

W06-73

BILL OF MATERIALS

ITEM	DESCRIPTION
1	#12 X 1 1/4" HEX HEAD S/S SMS (3 PER CONNECTION)
2A	3/8-16 FULLY THREADED CONTINUOUS ROD
2B	3/8-16 HEX NUT
2C	1 1/2" X 1 1/2" X 3/16" THK. ALUMINUM PLATE
3	SHEAR CLIP (EXT. NO. 506)
4	DOUBLE 9/32" DIA. JAMB INSTLL. HOLES AT 6" FROM ENDS & 24 3/16" O.C. MAX.
5	9/32" DIA. HEAD & SILL INSTLL. HOLES AT 6" FROM ENDS, 3 @ CENTER OF PAIRS SPACED 6" O.C. & 24" O.C. MAX.
6	#10 X 1" PH-PH-SS TEKS SCREW, @ 3" & 7" FROM ENDS & 24" O.C. MAX.
7	#14 X 3/4" HEX HEAD S/S TEKS SCREW AT 6" FROM ENDS & 24 3/16" O.C. MAX.
8	.320 HIGH WOOL PILE WITH CENTER FIN (ULTRAFAB # 3032)
9	.350 HIGH FOAM-TITE WEATHERSEAL (AMESBURY # 32011)
10	THREE POINT LOCK AT ACTIVE LEAF
10A	CUSTOM CGI THREE POINT LOCK MECHANISM WHICH CONSISTS OF (1) TITAN KWIKSET SERIES 780 DEADBOLT (OR EQUAL) (2) DEADBOLT LATCH (TOP & BOTTOM) AND CUSTOM CGI INTERIOR LINKAGE MECHANISM
10B	REFLECTOLITE SERIES 6000 THREE POINT LOCK MECHANISM
11	HAGER 4 1/2" X 4" SOLID BRASS (OR S/S) HINGE SECURED WITH (8) #12-24 X 1/2" BRASS F.H. M.S. (3 PER PANEL UP TO 7'-6 3/4" HIGH) (4 PER PANEL OVER 7'-6 3/4" TO 9'-0 3/4" HIGH)
12	FLUSHBOLT AT TOP & BOTTOM OF INACTIVE LEAF (DELTA MODEL 5509) WITH REINFORCED TIP

13	13A 1/2" NOMINAL (.466 ACTUAL) ANNEALED LAMINATED GLASS (2 PCS.) 3/16" THK. ANN. GLASS AND .090" SAFLEX INTERLAYER
	13B 1/2" NOMINAL (.466 ACTUAL) HEAT STREN'D LAMINATED GLASS (2 PCS.) 3/16" THK. H.S. GLASS AND .090" SAFLEX INTERLAYER
	13C 1" NOMINAL (.966 ACTUAL) INSUL. ANN. LAMINATED GLASS 1/8" TEMP. GLASS (OUTBOARD), 3/8" AIR SPACE AND (2 PCS.) 3/16" THK. ANN. GLASS AND .090" SAFLEX INTERLAYER OR 1" NOMINAL (.966 ACTUAL) INSUL. ANN. LAMINATED GLASS 1/4" TEMP. GLASS (OUTBOARD), 1/4" AIR SPACE AND (2 PCS.) 3/16" THK. ANN. GLASS AND .090" SAFLEX INTERLAYER
14	GE-1200 SILICONE
15	3/4" X 1 1/4" X 3/4" X 1/8" THK. CONTINUOUS ALUMINUM CHANNEL SECURED WITH INSTALLATION SCREWS (SEE ITEM 5)
16	1/2" THK. (nom) CUSTOM ALUMINUM PANEL CONSISTING OF (2) .090 THK. ALUM. SHEETS & (1) 1/4" PLYWOOD AT CENTER
17	1/2" X 1/2" CONTINUOUS CLOSED CELL FOAM TAPE WITH ONE SIDE ADHESIVE
18	PLASTIC WEEP BAFFLE
19	7/8" X 5" X 1/8" THK. CONTINUOUS ALUMINUM SILL ANGLE ADAPTOR
EXT. = EXTRUSION LIST 500, 501, 502, 506, 507, 508, 509, 510 & 511 ALL EXTRUSIONS ARE 6063-T6.	

W06-73

Engr: DR. HUMAYOON FAROOQ
STRUCTURES
FLA. PE # 185J7

NOV 08 2006

PRODUCT RENEWED
as complying with the Florida
Building Code
Acceptance No 07-0228.01
Expiration Date NOV 09, 2011

By Ishag I. Lhanda
Miami Dade Product Control
Division



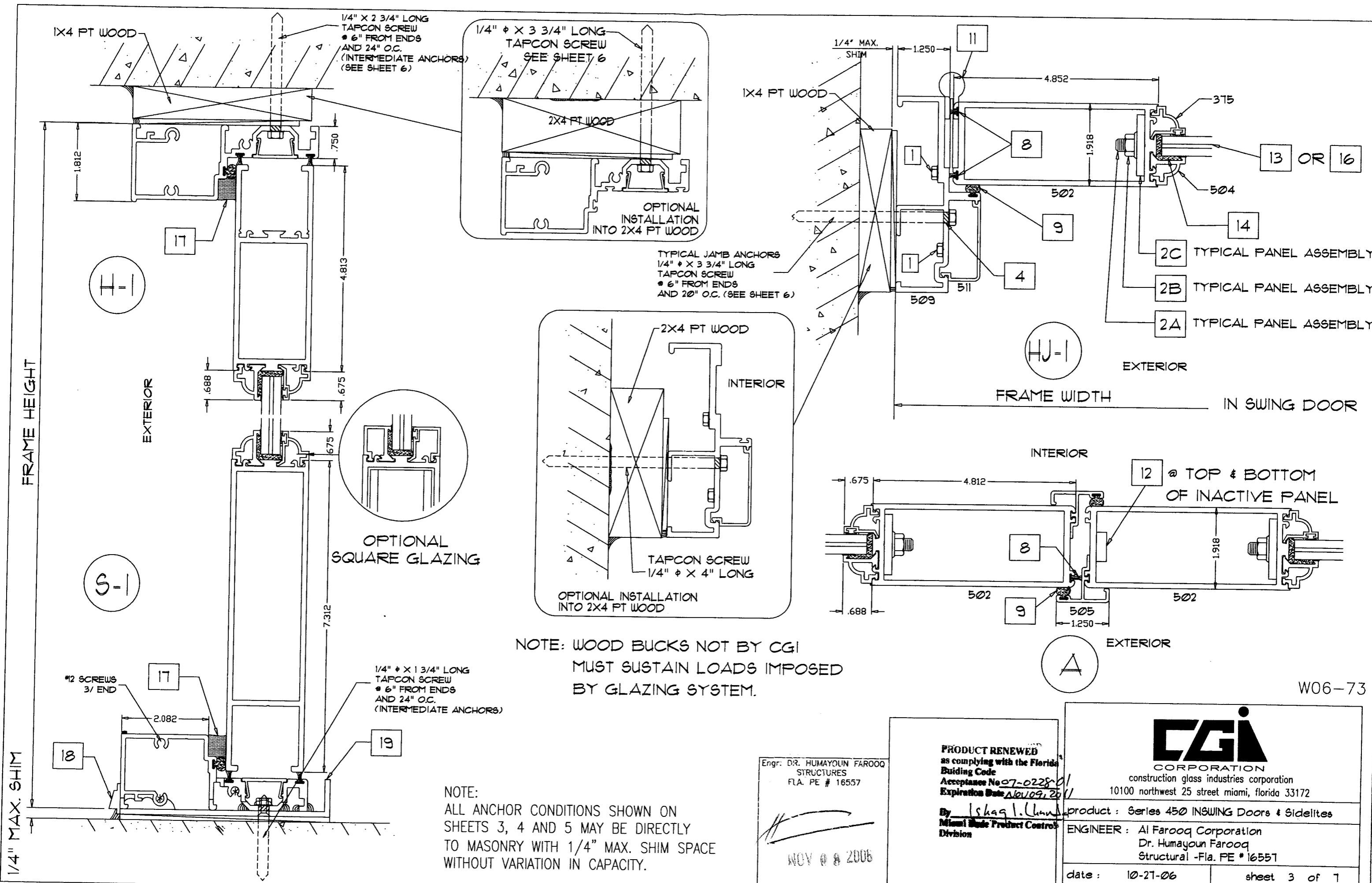
construction glass industries corporation
10100 northwest 25 street miami, florida 33172

product: Series 450 Inswing Doors & Sidelites

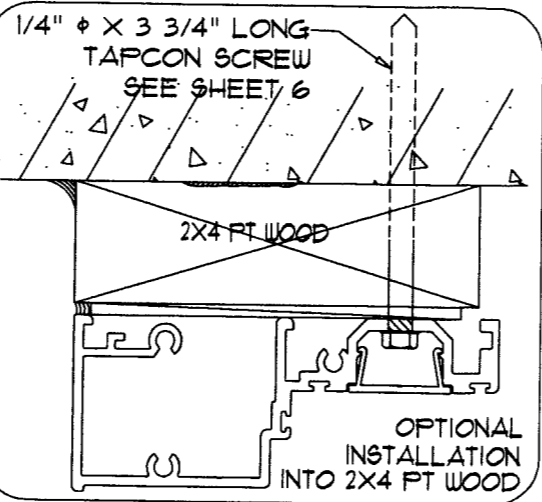
ENGINEER: Al Farooq Corporation
Dr. Humayoun Farooq
Structural -Fla. PE # 16551

date: 10-27-06

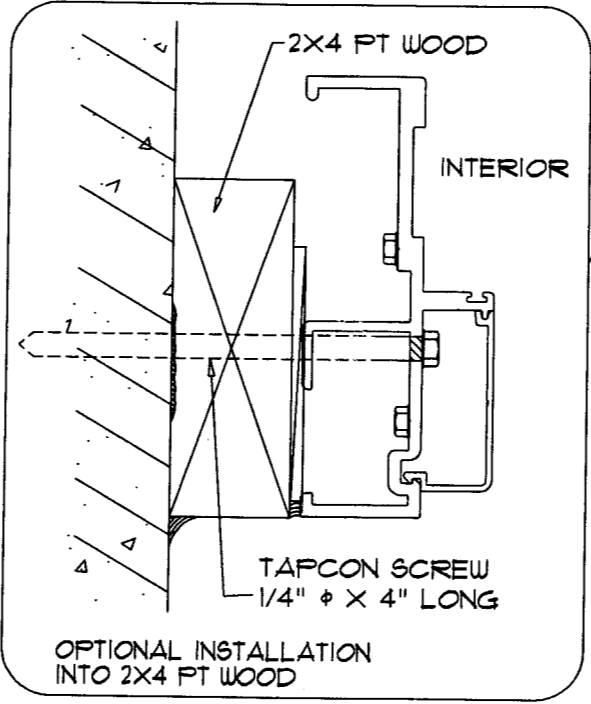
sheet 2 of 1



1/4" X 2 3/4" LONG TAPCON SCREW
 • 6" FROM ENDS AND 24" O.C. (INTERMEDIATE ANCHORS) (SEE SHEET 6)



TYPICAL JAMB ANCHORS
 1/4" ϕ X 3 3/4" LONG TAPCON SCREW
 • 6" FROM ENDS AND 20" O.C. (SEE SHEET 6)



OPTIONAL SQUARE GLAZING

NOTE: WOOD BUCKS NOT BY CGI
 MUST SUSTAIN LOADS IMPOSED BY GLAZING SYSTEM.

NOTE: ALL ANCHOR CONDITIONS SHOWN ON SHEETS 3, 4 AND 5 MAY BE DIRECTLY TO MASONRY WITH 1/4" MAX. SHIM SPACE WITHOUT VARIATION IN CAPACITY.

1/4" ϕ X 1 3/4" LONG TAPCON SCREW
 • 6" FROM ENDS AND 24" O.C. (INTERMEDIATE ANCHORS)

#12 SCREWS
 3/8" END

W06-73

Engr. DR. HUMAYOON FAROOQ
 STRUCTURES
 FLA. PE # 16557

NOV 8 2006

PRODUCT RENEWED
 as complying with the Florida Building Code
 Acceptance No 07-0228-01
 Expiration Date 10/09/25/11

By Iskag I. Linn
 Miami Code Product Control Division



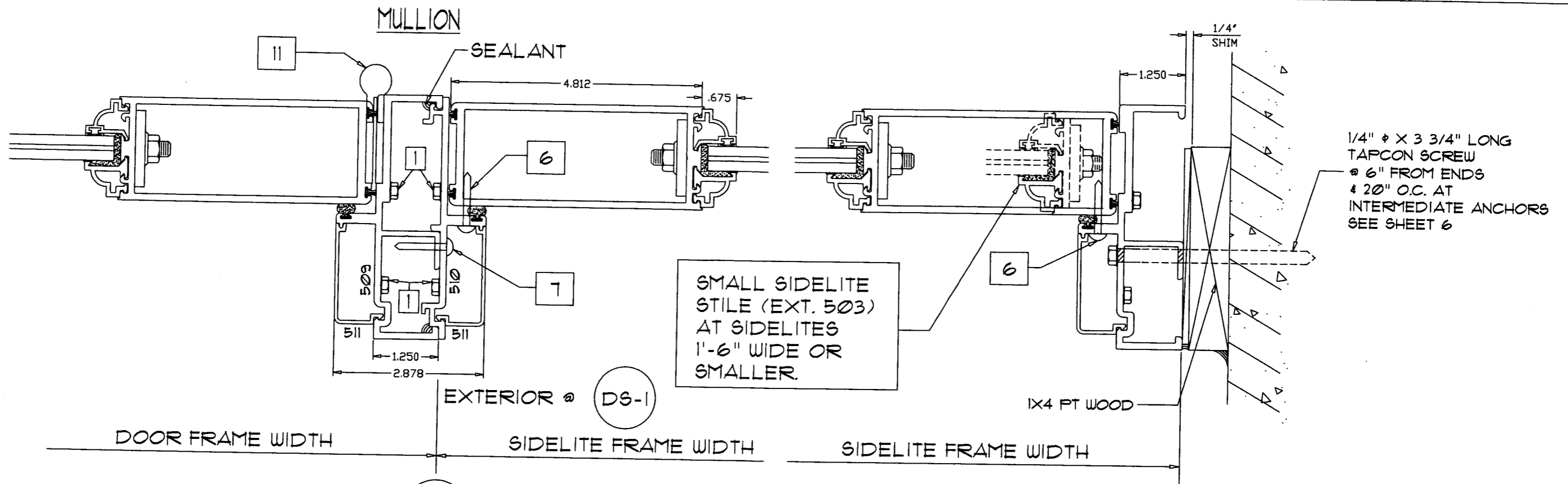
construction glass industries corporation
 10100 northwest 25 street miami, florida 33172

product: Series 450 IN SWING Doors & Sidelites

ENGINEER: Al Farooq Corporation
 Dr. Humayoun Farooq
 Structural -Fla. PE #16557

date: 10-27-06

sheet 3 of 7



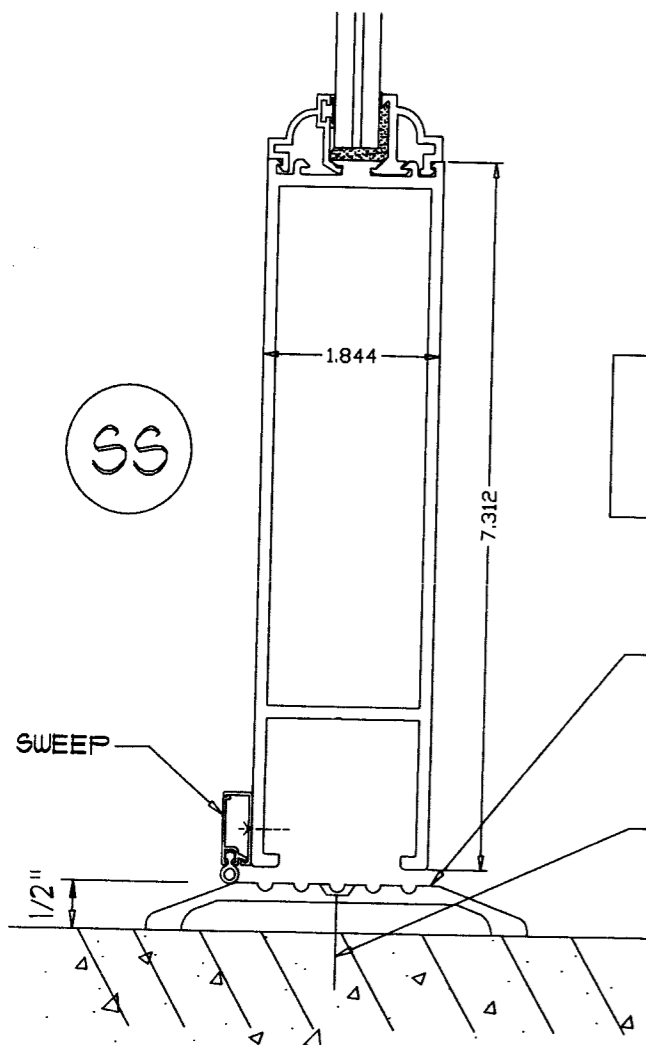
DOOR FRAME WIDTH

SIDELITE FRAME WIDTH

SIDELITE FRAME WIDTH

DS-1

SJ-1



SS

THIS SILL IS NOT RATED FOR WATER

REFER TO SHEET 2 OF 7 FOR TYPICAL BILL OF MATERIALS

W06-73

Engr. DR. HUMAYOON FAROOQ
STRUCTURES
FLA. PE # 16557

[Signature]
NOV 08 2006

PRODUCT RENEWED
as complying with the Florida Building Code
Acceptance No 07-0228-U
Expiration Date NOV 09, 2011

By Shuaib I. Chaudh
Miami Dade Product Control Division



construction glass industries corporation
10100 northwest 25 street miami, florida 33172

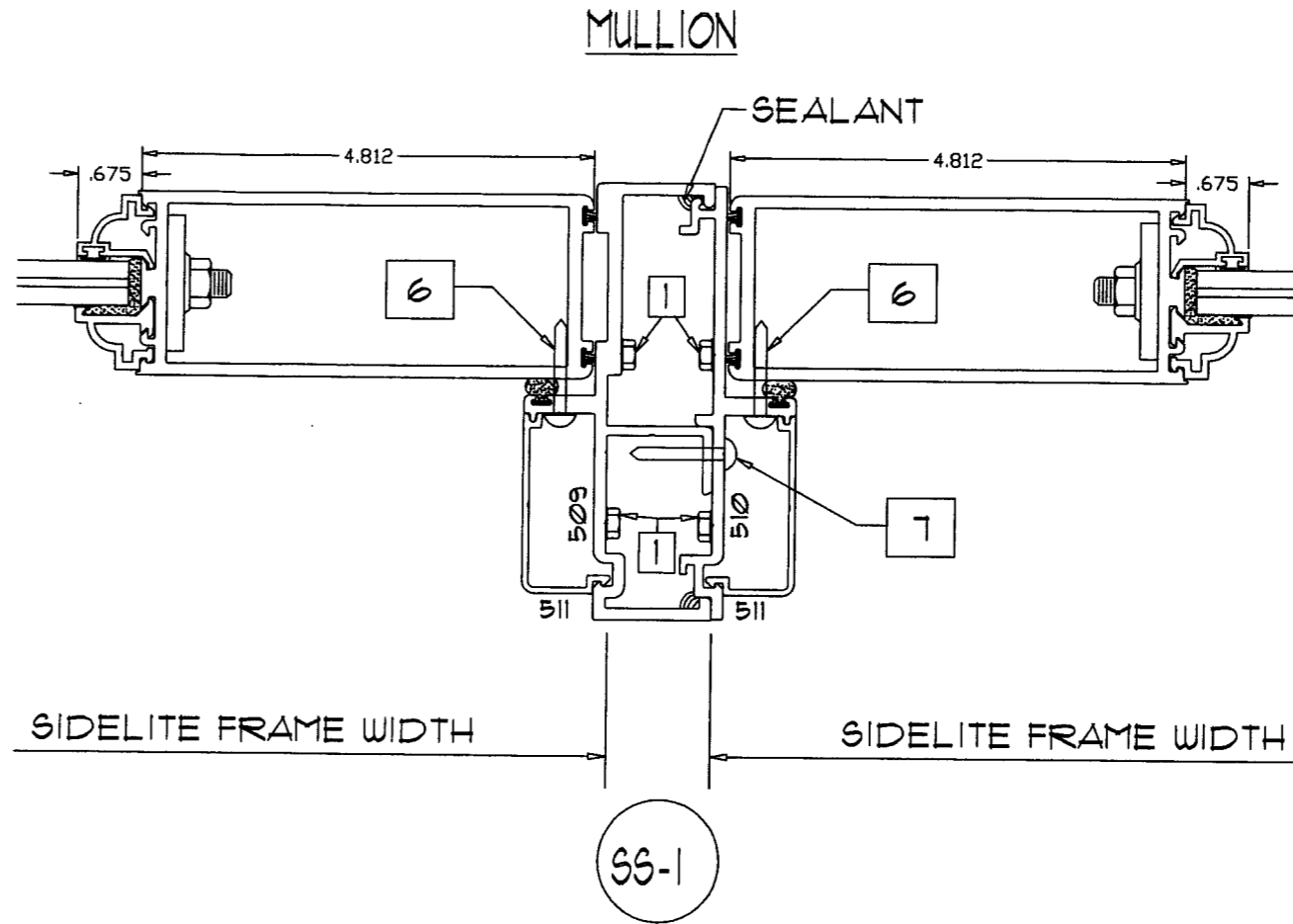
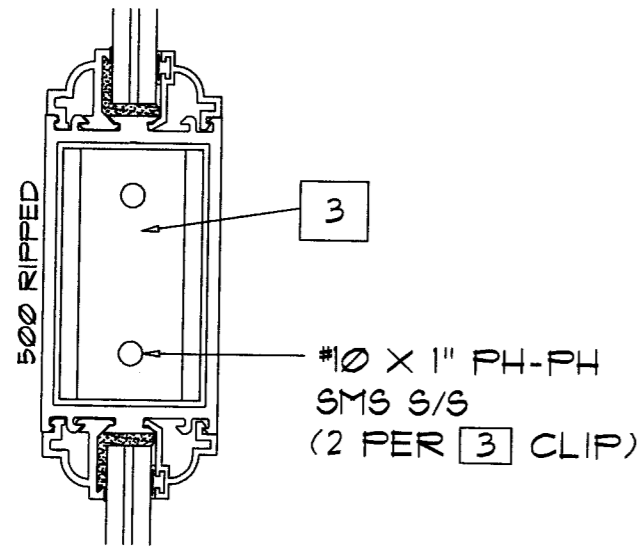
product : Series 450 INSWING Doors & Sidelites

ENGINEER : Al Farooq Corporation
Dr. Humayoun Farooq
Structural -Fla. PE # 16557

date : 10-27-06

sheet 4 of 7

MT



REFER TO SHEET 2 OF 7 FOR TYPICAL BILL OF MATERIALS

W06-73

Engr: DR. HUMAYOON FAROOQ
STRUCTURES
FLA. PE # 16557

[Signature]
NOV 08 2006

PRODUCT RENEWED
as complying with the Florida
Building Code
Acceptance No 07-0228-01
Expiration Date Nov 09, 2011
By King J. L. L...
Miami Dade Product Control
Division



construction glass industries corporation
10100 northwest 25 street miami, florida 33172

product : Series 450 INSWING Doors & Sidelites

ENGINEER : Al Farooq Corporation
Dr. Humayoun Farooq
Structural -Fla. PE # 16557

date : 10-27-06

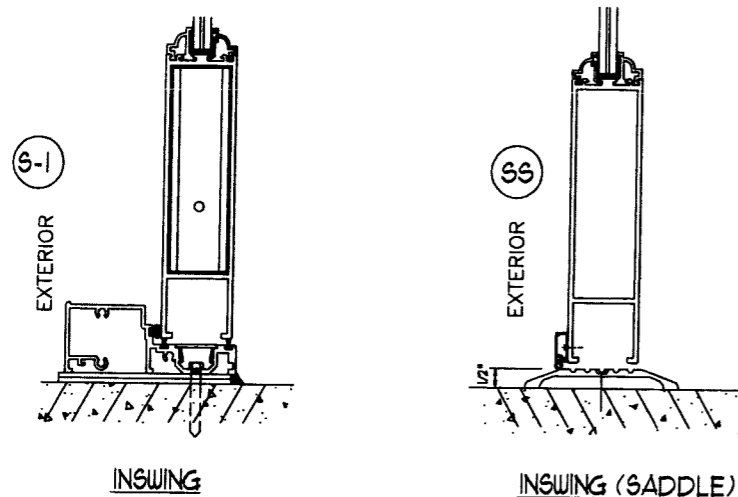
sheet 5 of 7

PANEL PERFORMANCE CHART FOR DOORS, SINGLE SIDELITES AND MULLIONS
LAMINATED GLASS

NOMINAL DIMS.		IN-SWING DESIGN LOAD CAPACITY-PSF				MULLION LOAD CAPACITY PSF
PANEL WIDTH	PANEL HEIGHT	ANN. LAM. GLASS (TYPE 13A)		H.S. LAM. GLASS (TYPE 13B)		
		EXT.	INT.	EXT.	INT.	
2/0	6/8	100.0	100.0	100.0	110.0	110.0
2/6		100.0	100.0	100.0	110.0	110.0
3/0		100.0	100.0	100.0	110.0	110.0
3/6		87.1	87.1	100.0	110.0	110.0
2/0	7/0	100.0	100.0	100.0	110.0	110.0
2/6		100.0	100.0	100.0	110.0	110.0
3/0		100.0	100.0	100.0	110.0	110.0
3/6		82.6	82.6	100.0	110.0	110.0
2/0	7/6	100.0	100.0	100.0	110.0	110.0
2/6		100.0	100.0	100.0	110.0	110.0
3/0		100.0	100.0	100.0	110.0	110.0
3/6		76.8	76.8	100.0	102.9	110.0
2/0	8/0	100.0	100.0	100.0	110.0	110.0
2/6		100.0	100.0	100.0	110.0	110.0
3/0		100.0	100.0	100.0	110.0	110.0
2/0	9/0	100.0	100.0	100.0	110.0	110.0
2/6		100.0	100.0	100.0	110.0	96.6
3/0		100.0	100.0	100.0	100.0	80.5

LOADS SHOWN ABOVE ARE FOR INSTALLATIONS WHERE WATER INFILTRATION RESISTANCE IS NOT REQUIRED.
LIMIT EXT.(+) LOADS TO 50.0 PSF FOR THRESHOLD (S-I) WHERE WATER INFILTRATION RESISTANCE IS REQUIRED.
THRESHOLD (S-S) IS NOT RATED FOR WATER INFILTRATION.

NOTE:
GLASS CAPACITIES ON THIS SHEET ARE
BASED ON ASTM E1300-02 (3 SEC. GUSTS)

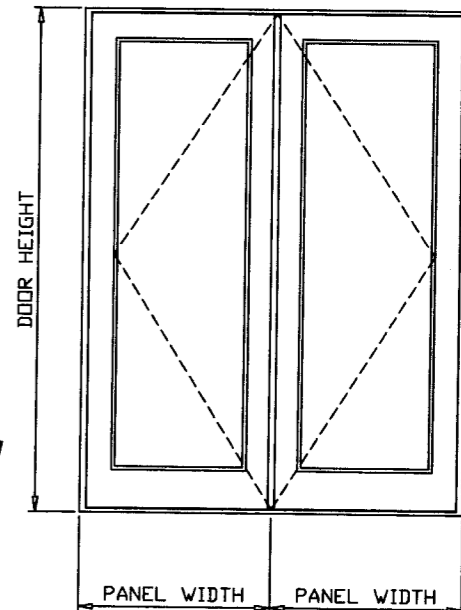
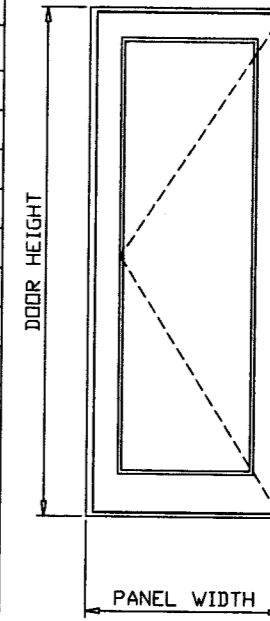


PANEL PERFORMANCE CHART FOR DOORS, SINGLE SIDELITES AND MULLIONS
INSULATED LAMINATED GLASS

NOMINAL DIMS.		IN-SWING DESIGN LOAD CAPACITY-PSF INSUL. ANN. LAM. GLASS (TYPE 13C)	
PANEL WIDTH	PANEL HEIGHT	EXT.	INT.
2/0	6/8	80.0	80.0
2/6		80.0	80.0
3/0		80.0	80.0
3/6		80.0	80.0
2/0	7/0	80.0	80.0
2/6		80.0	80.0
3/0		80.0	80.0
2/0	7/6	80.0	80.0
2/6		80.0	80.0
3/0		80.0	80.0
2/0	8/0	80.0	80.0
2/6		80.0	80.0
3/0		80.0	80.0

LOADS SHOWN ABOVE ARE FOR INSTALLATIONS WHERE WATER INFILTRATION RESISTANCE IS NOT REQUIRED.
LIMIT EXT.(+) LOADS TO 50.0 PSF FOR THRESHOLD (S-I) WHERE WATER INFILTRATION RESISTANCE IS REQUIRED.
THRESHOLD (S-S) IS NOT RATED FOR WATER INFILTRATION.

PRODUCT RENEWED
as complying with the Florida
Building Code
Acceptance No. 07-0228-01
Expiration Date Nov 09, 2011
By Ishaq I. Chaudhry
Miami Glass Product Control
Division



THESE CHARTS CAN BE USED TO CHECK CAPACITY FOR
SINGLE OR DOUBLE LEAF DOORS.
REFER TO TABLES ON SHEET 7 TO DETERMINE ANCHORS REQUIRED.

STEPS TO USE CHARTS:

1. DETERMINE WIND LOAD BASED ON PROVISIONS OF 2004 FLORIDA BLDG. CODE.
2. DETERMINE WATER INFILTRATION REQUIREMENTS BASED ON PROVISIONS OF FBC.
3. SELECT A DOOR SYSTEM I.E. INSWING/OUTSWING AND TYPE OF THRESHOLD.
4. CHECK THE ALLOWABLE EXTERIOR AND INTERIOR LOADS FROM APPROPRIATE CHART. THE ALLOWABLE LOADS MUST MEET OR EXCEED THE DESIGN LOADS REQUIREMENTS.
5. SELECT AND CHECK ANCHORS TO MEET LOAD.
6. FOR MULLED SIDELITE REFER TO MULLION CAPACITY.

Engr. DR. HUMAYOUN FAROOQ
STRUCTURES
FLA. PE # 16557

[Signature]

NOV 08 2006

afc

AL-FAROOQ CORPORATION
ENGINEERS, PLANNERS & PRODUCT DESIGN
1235 SW 87 AVE
MIAMI, FLORIDA 33174
TEL. (305) 264-8100 FAX. (305) 262-6978

SERIES 450 INSWING DOOR AND SIDELITE
CONSTRUCTION GLASS INDUSTRIES
10100 N.W. 25 ST.
MIAMI, FL. 33172
(305) 593 - 6590

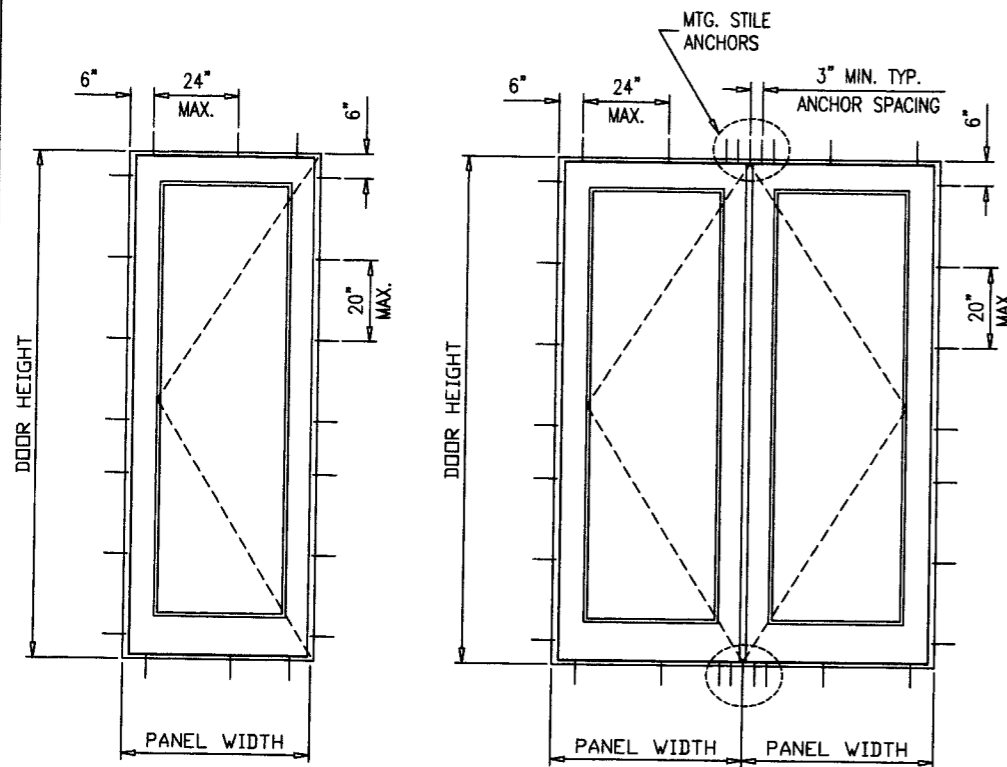
no.	date	description

date: 10-27-06
scale: 1/2" = 1"
dr. by: HAMID
chk. by:

drawing no.
W06-73

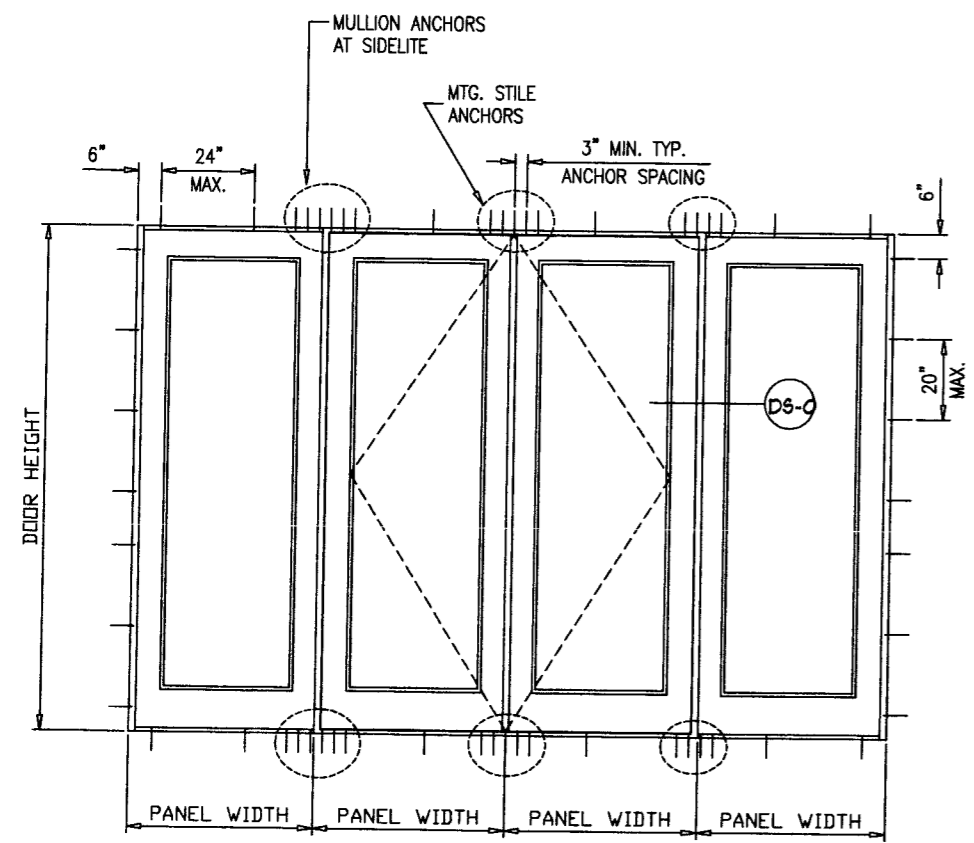
sheet 6 of 7

COMP-ANL\W06-73CG



SINGLE DOOR OR SIDELITE

DOUBLE DOOR



FOR SIDELITE AVG. PANEL WIDTH = $\frac{\text{DOOR PANEL} + \text{FIXED PANEL}}{2}$

MULLION ANCHORS AT SIDELITES					
NOMINAL DIMS		DESIGN LOAD CAPACITY-PSF			
PANEL WIDTH	PANEL HEIGHT	TYPE 'B'		TYPE 'C'	
		CLUSTER OF 2 ANCHORS	CLUSTER OF 4 ANCHORS	CLUSTER OF 6 ANCHORS	CLUSTER OF 2 ANCHORS
2/0	6/8	88.2	110.0	110.0	110.0
2/6		70.6	110.0	110.0	100.3
3/0		58.8	110.0	110.0	83.6
3/6		50.4	100.8	110.0	71.7
2/0	7/0	84.0	110.0	110.0	110.0
2/6		67.2	110.0	110.0	95.5
3/0		56.0	110.0	110.0	79.6
3/6		48.0	96.0	110.0	68.2
2/0	7/6	78.4	110.0	110.0	110.0
2/6		62.7	110.0	110.0	89.2
3/0		52.3	104.5	110.0	74.3
3/6		44.8	89.6	110.0	63.7
2/0	8/0	73.5	110.0	110.0	104.5
2/6		58.8	110.0	110.0	83.6
3/0		49.0	98.0	110.0	69.7
2/0	9/0	65.3	110.0	110.0	92.9
2/6		52.3	104.5	110.0	74.3
3/0		43.6	87.1	110.0	61.9

MTG. STILE ANCHORS AT DOUBLE DOORS					
NOMINAL DIMS		DESIGN LOAD CAPACITY-PSF			
PANEL WIDTH	PANEL HEIGHT	TYPE 'B'		TYPE 'C'	
		CLUSTER OF 2 ANCHORS	CLUSTER OF 4 ANCHORS	CLUSTER OF 5 ANCHORS	CLUSTER OF 2 ANCHORS
2/0	6/8	88.2	110.0	110.0	110.0
2/6		70.6	110.0	110.0	100.3
3/0		58.8	110.0	110.0	83.6
3/6		50.4	100.8	110.0	71.7
2/0	7/0	84.0	110.0	110.0	110.0
2/6		67.2	110.0	110.0	95.5
3/0		56.0	110.0	110.0	79.6
3/6		48.0	96.0	110.0	68.2
2/0	7/6	78.4	110.0	110.0	110.0
2/6		62.7	110.0	110.0	89.2
3/0		52.3	104.5	110.0	74.3
3/6		44.8	89.6	110.0	63.7
2/0	8/0	73.5	110.0	110.0	104.5
2/6		58.8	110.0	110.0	83.6
3/0		49.0	98.0	110.0	69.7
2/0	9/0	65.3	110.0	110.0	92.9
2/6		52.3	104.5	110.0	74.3
3/0		43.6	87.1	108.9	61.9

ANCHORS:

TYPE 'B' - 1/4" TAPCONS
 INTO WOOD STRUCTURES
 1-3/4" MIN. PENETRATION INTO WOOD
 THRU WOOD BUCKS INTO CONC. OR MASONRY
 1-1/4" MIN. EMBED INTO CONC. OR MASONRY

TYPE 'C' - 1/4" TAPCONS
 DIRECTLY INTO CONC. OR MASONRY
 1-1/4" MIN. EMBED INTO CONC. OR MASONRY

EDGE DISTANCES

INTO CONCRETE AND MASONRY = 2-5/8" MIN.
 INTO WOOD STRUCTURE = 1" MIN.

STEPS TO USE CHARTS:

1. SELECT TYPE OF ANCHOR.
2. FOR SIZE OF UNITS DETERMINE ALLOWABLE LOAD CAPACITY. THIS LOAD CAPACITY MUST MEET OR EXCEED DESIGN WIND LOAD REQUIREMENT DETERMINE IN STEP 1 OF SHEET 6.

PRODUCT RENEWED
 as complying with the Florida Building Code
 Acceptance No. 07-0228-01
 Expiration Date: NOV 09, 2011
 By: Ishaq I. Chaudhry
 Miami Dade Product Control Division

Engr: DR. HUMAYOUN FAROOQ
 STRUCTURES
 FLA. P.E. # 15557

NOV 08 2006

afc

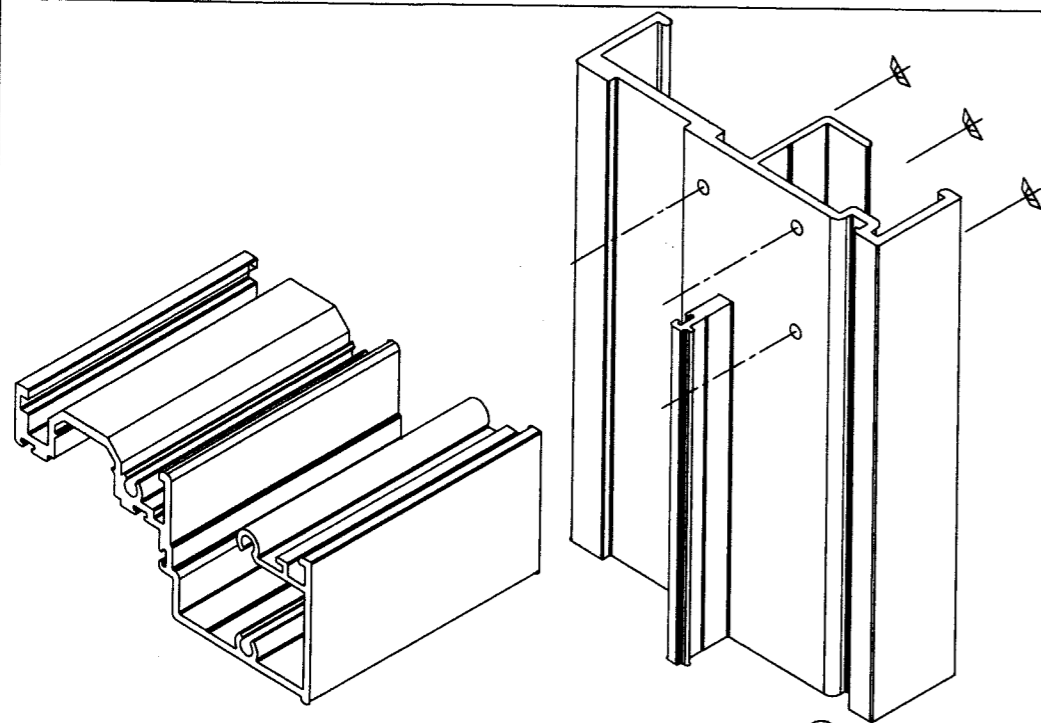
AL-FAROOQ CORPORATION
 ENGINEERS, PLANNERS & PRODUCT DESIGN
 1235 SW 87 AVE
 MIAMI, FLORIDA 33174
 TEL. (305) 264-8100 FAX. (305) 262-6978
 COMP-ANL\W06-73CG

SERIES 450 INSWING DOOR AND SIDELITE
 CONSTRUCTION GLASS INDUSTRIES
 10100 N.W. 25 ST.
 MIAMI, FL. 33172
 (305) 593 - 6590

no	date	by	description

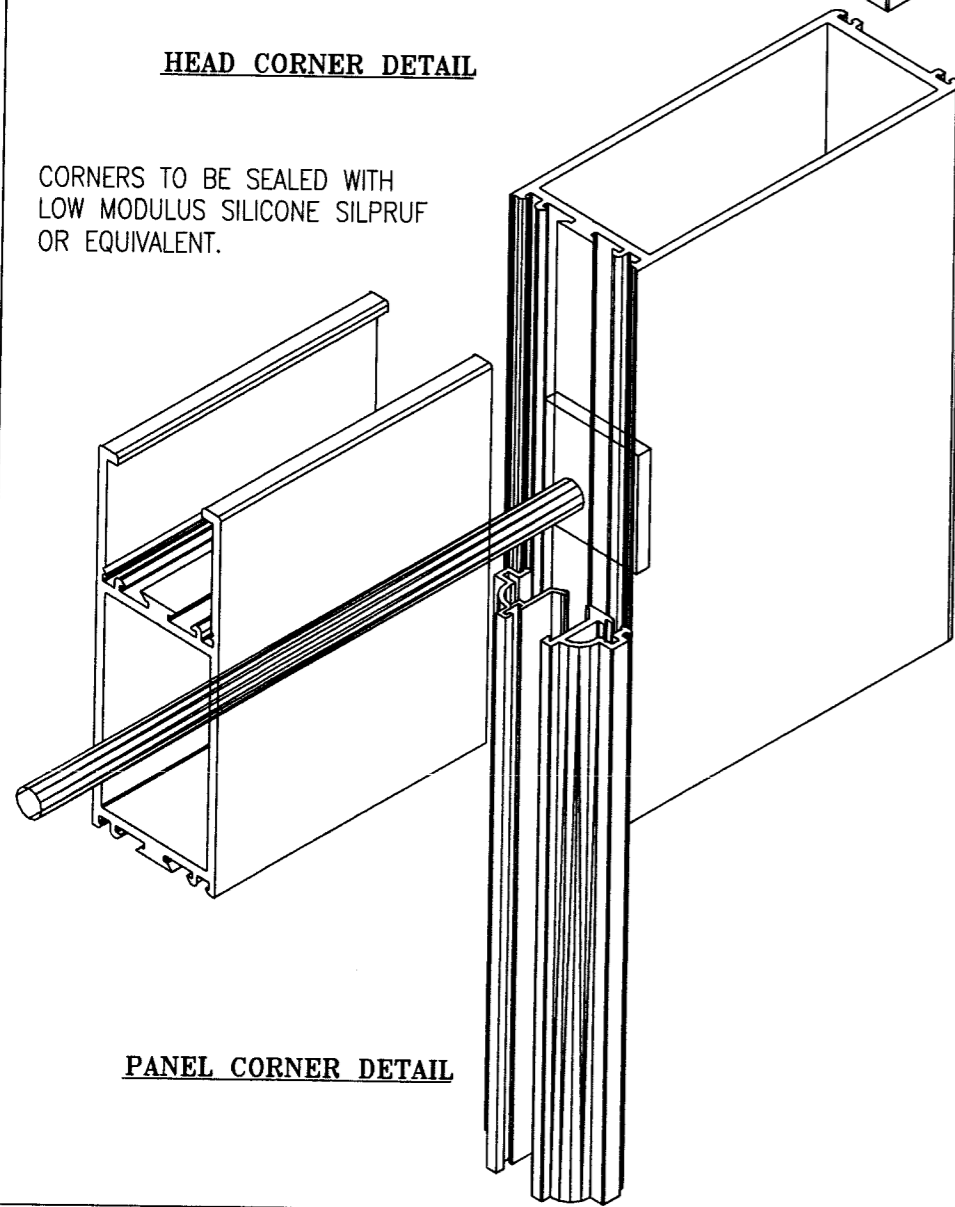
date: 10-27-06
 scale: 1/2" = 1"
 dr. by: HAMID
 chk. by:

drawing no. W06-73
 sheet 7 of 7

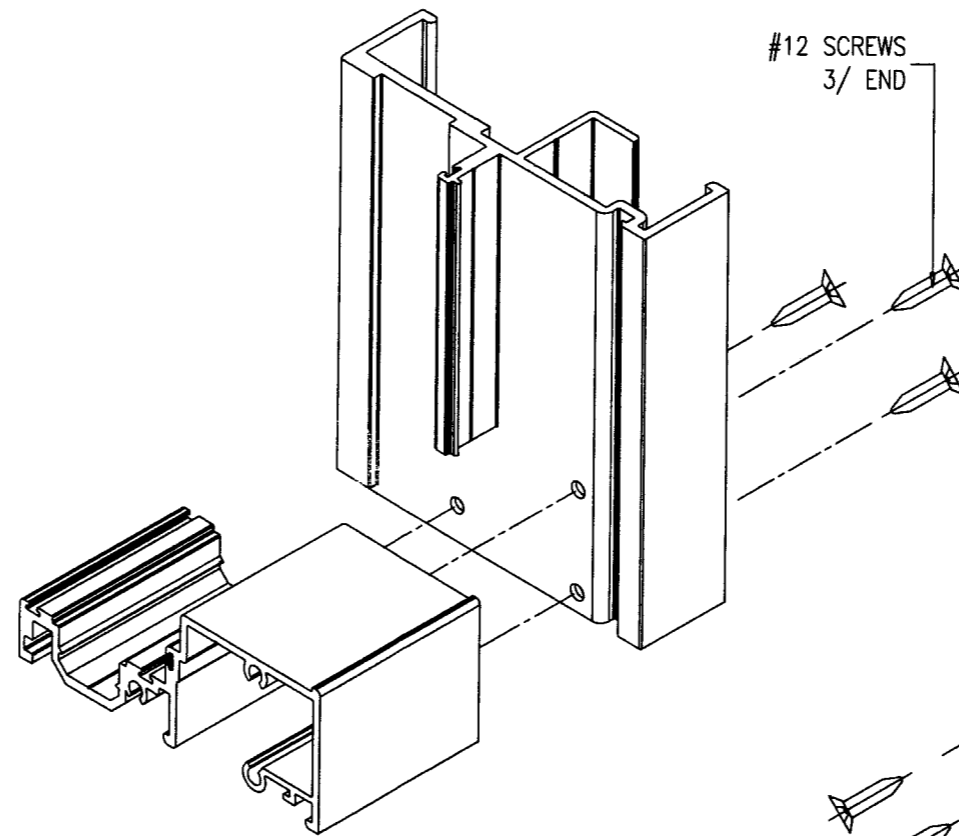


HEAD CORNER DETAIL

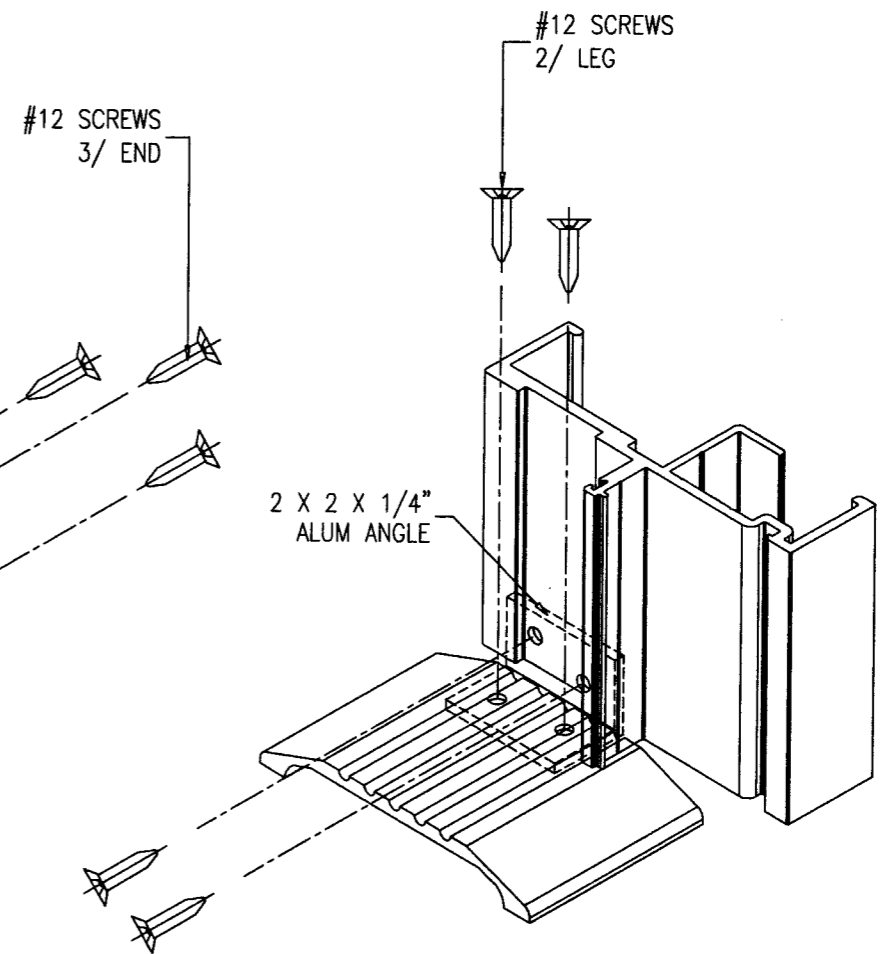
CORNERS TO BE SEALED WITH LOW MODULUS SILICONE SILPRUF OR EQUIVALENT.



PANEL CORNER DETAIL



SILL CORNER DETAIL



SILL CORNER DETAIL

Engr: DR. HJIMAYCUN FAROOQ
STRUCTURES
FLA. PE # 16557

NOV 08 2006

PRODUCT RENEWED
as complying with the Florida
Building Code
Acceptance No 07-0228.01
Expiration Date NOV 09, 2011
By Isaac I. Chaudh
Miami Dade Product Control
Division

afc

AL-FAROOQ CORPORATION
ENGINEERS, PLANNERS & PRODUCT DESIGN
1235 SW 87 AVE
MIAMI, FLORIDA 33174
TEL. (305) 264-8100 FAX. (305) 262-6978
COMP-ANL\W06-73CG

SERIES 450 INSWING DOOR AND SIDELITE
CONSTRUCTION GLASS INDUSTRIES
10100 N.W. 25 ST.
MIAMI, FL. 33172
(305) 593 - 6590

no	date	by	description

revisions:

date: 10-27-06
scale: 1/2" = 1"
dr. by: HAMID
chk. by:

drawing no.
W06-73

sheet 7.1 of 7